


### Anti-SARA antibody [EPR5020] ab124875

リコンビナント RabMAb<sup>®</sup>

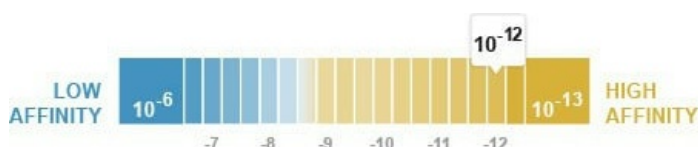
**5 References** [画像数 5](#)

#### 製品の概要

製品名	Anti-SARA antibody [EPR5020]
製品の詳細	Rabbit monoclonal [EPR5020] to SARA
由来種	Rabbit
アプリケーション	<b>適用あり:</b> WB, IHC-P <b>適用なし:</b> ICC/IF
種交差性	<b>交差種:</b> Human <b>交差が予測される動物種:</b> Rat 
免疫原	Synthetic peptide within Human SARA aa 1-100 (N terminal). The exact sequence is proprietary.
ポジティブ・コントロール	Huan heart, A673, HT-1080, BxPC-3, Jutkat, HeLa, and Human fetal brain lysates, Human kidney tissue
特記事項	<p>This product is a recombinant monoclonal antibody, which offers several advantages including:</p> <ul style="list-style-type: none"> <li>- High batch-to-batch consistency and reproducibility</li> <li>- Improved sensitivity and specificity</li> <li>- Long-term security of supply</li> <li>- Animal-free production</li> </ul> <p>For more information <a href="#">see here</a>.</p> <p>Our RabMAb<sup>®</sup> technology is a patented hybridoma-based technology for making rabbit monoclonal antibodies. For details on our patents, please refer to <a href="#">RabMAb<sup>®</sup> patents</a>.</p> <p>Mouse: We have preliminary internal testing data to indicate this antibody may not react with this species. Please contact us for more information.</p>

#### 製品の特性

製品の状態	Liquid
保存方法	Shipped at 4°C. Upon delivery aliquot and store at -20°C. Avoid repeated freeze / thaw cycles.
解離定数 (K <sub>D</sub> 値)	K <sub>D</sub> = 3.10 x 10 <sup>-12</sup> M



[Learn more about K<sub>D</sub>](#)

バッファー	pH: 7.20 Preservative: 0.05% Sodium azide Constituents: 40% Glycerol (glycerin, glycerine), 9.85% Tris glycine, 50% Tissue culture supernatant
精製度	Protein A purified
ポリ/モノ	モノクローナル
クローン名	EPR5020
アイソタイプ	IgG

#### アプリケーション

**The Abpromise guarantee**      **Abpromise保証は、**次のテスト済みアプリケーションにおけるab124875の使用に適用されます  
アプリケーションノートには、推奨の開始希釈率がありますが、適切な希釈率につきましてはご検討ください。

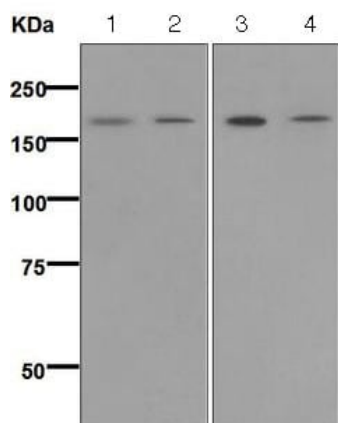
アプリケーション	Abreviews	特記事項
WB		1/10000 - 1/50000. Detects a band of approximately 180 kDa (predicted molecular weight: 156 kDa).
IHC-P		1/100 - 1/250. Perform heat mediated antigen retrieval with citrate buffer pH 6 before commencing with IHC staining protocol.

**追加情報**      Is unsuitable for ICC/IF.

#### ターゲット情報

機能	Early endosomal protein that functions to recruit SMAD2/SMAD3 to intracellular membranes and to the TGF-beta receptor. Plays a significant role in TGF-mediated signaling by regulating the subcellular location of SMAD2 and SMAD3 and modulating the transcriptional activity of the SMAD3/SMAD4 complex. Possibly associated with TGF-beta receptor internalization.
組織特異性	Ubiquitous. In the brain found primarily in the cerebrovascular smooth muscle cells and reactive astrocytes.
配列類似性	Contains 1 FYVE-type zinc finger.
ドメイン	The SMAD binding domain (SBD) interacts with the MH2 domains of SMAD2 or SMAD3. The FYVE-type zinc finger is necessary and sufficient for its localization into early endosomes and mediates the association with PI3P.
細胞内局在	Cytoplasm. Early endosome membrane.

#### 画像



Western blot - Anti-SARA antibody [EPR5020] (ab124875)

**All lanes :** Anti-SARA antibody [EPR5020] (ab124875) at 1/10000 dilution

**Lane 1 :** Human heart tissue lysate

**Lane 2 :** A673 cell lysate

**Lane 3 :** HT-1080 cell lysate

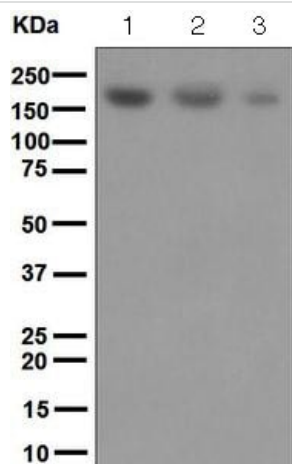
**Lane 4 :** BxPC-3 cell lysate

Lysates/proteins at 10 µg per lane.

#### Secondary

**All lanes :** HRP labelled goat anti-rabbit at 1/2000 dilution

**Predicted band size:** 156 kDa



Western blot - Anti-SARA antibody [EPR5020] (ab124875)

**All lanes :** Anti-SARA antibody [EPR5020] (ab124875) at 1/10000 dilution

**Lane 1 :** Jurkat cell lysate

**Lane 2 :** HeLa cell lysate

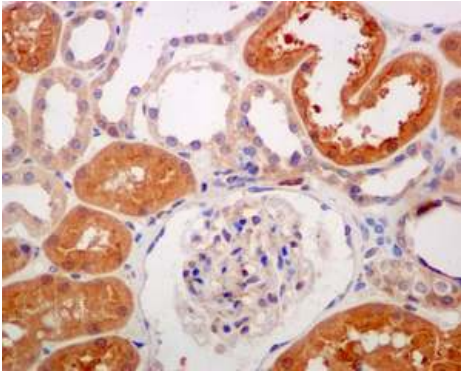
**Lane 3 :** Human fetal brain tissue lysate

Lysates/proteins at 10 µg per lane.

#### Secondary

**All lanes :** HRP labelled goat anti-rabbit at 1/2000 dilution

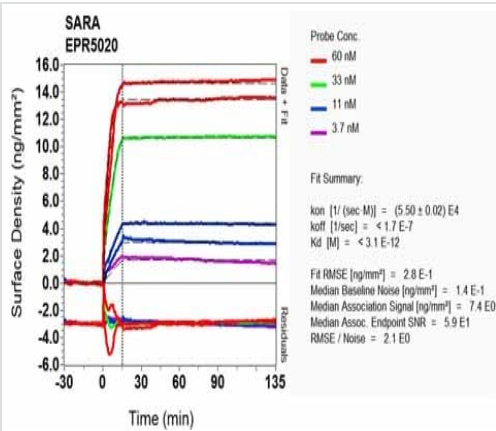
**Predicted band size:** 156 kDa



Immunohistochemistry (Formalin/PFA-fixed paraffin-embedded sections) - Anti-SARA antibody [EPR5020] (ab124875)

Staining of SARA in Paraffin-embedded Human kidney tissue by Immunohistochemistry using ab124875 at a dilution of 1/100.

Perform heat mediated antigen retrieval with citrate buffer pH 6 before commencing with IHC staining protocol.



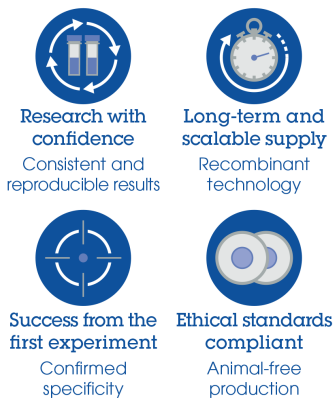
OIR-D Scanning - Anti-SARA antibody [EPR5020] (ab124875)

Equilibrium disassociation constant ( $K_D$ )

Learn more about  $K_D$

[Click here to learn more about  \$K\_D\$](#)

Why choose a recombinant antibody?



Anti-SARA antibody [EPR5020] (ab124875)

**Please note:** All products are "FOR RESEARCH USE ONLY. NOT FOR USE IN DIAGNOSTIC PROCEDURES"

## **Our Abpromise to you: Quality guaranteed and expert technical support**

---

- Replacement or refund for products not performing as stated on the datasheet
- Valid for 12 months from date of delivery
- Response to your inquiry within 24 hours
  
- We provide support in Chinese, English, French, German, Japanese and Spanish
- Extensive multi-media technical resources to help you
- We investigate all quality concerns to ensure our products perform to the highest standards

If the product does not perform as described on this datasheet, we will offer a refund or replacement. For full details of the Abpromise, please visit <https://www.abcam.co.jp/abpromise> or contact our technical team.

## **Terms and conditions**

---

- Guarantee only valid for products bought direct from Abcam or one of our authorized distributors