


Anti-SAR1B antibody [EPR10105(B)] ab155278

リコンビナント **RabMAb**

★★★★★ **3 Abreviews** **4 References** 画像数 6

製品の概要

製品名	Anti-SAR1B antibody [EPR10105(B)]
製品の詳細	Rabbit monoclonal [EPR10105(B)] to SAR1B
由来種	Rabbit
アプリケーション	適用あり: Flow Cyt (Intra), ICC/IF, WB, IHC-P
種交差性	交差種: Human 交差が予測される動物種: Mouse, Rat 
免疫原	Synthetic peptide. This information is proprietary to Abcam and/or its suppliers.
ポジティブ・コントロール	293T, fetal liver, fetal brain and Human skeletal muscle lysates; Human gastric carcinoma and brain tissue; 293T cells.
特記事項	<p>This product is a recombinant monoclonal antibody, which offers several advantages including:</p> <ul style="list-style-type: none"> - High batch-to-batch consistency and reproducibility - Improved sensitivity and specificity - Long-term security of supply - Animal-free production <p>For more information see here.</p> <p>Our RabMAb[®] technology is a patented hybridoma-based technology for making rabbit monoclonal antibodies. For details on our patents, please refer to RabMAb[®] patents.</p>

製品の特性

製品の状態	Liquid
保存方法	Shipped at 4°C. Store at -20°C.
バッファー	<p>pH: 7.2</p> <p>Preservative: 0.01% Sodium azide</p> <p>Constituents: 9% PBS, 40% Glycerol (glycerin, glycerine), 0.05% BSA, 50% Tissue culture supernatant</p>
精製度	Tissue culture supernatant
ポリ/モノ	モノクローナル
クローン名	EPR10105(B)

アプリケーション

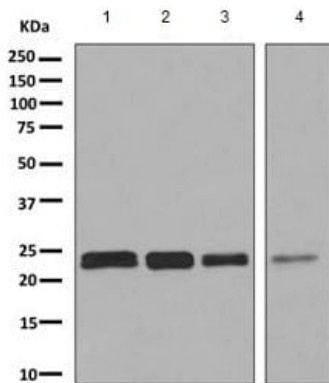
The Abpromise guarantee **Abpromise保証は、次のテスト済みアプリケーションにおけるab155278の使用に適用されます**
アプリケーションノートには、推奨の開始希釈率がありますが、適切な希釈率につきましてはご検討ください。

アプリケーション	Abreviews	特記事項
Flow Cyt (Intra)		1/10 - 1/100. ab172730 - Rabbit monoclonal IgG, is suitable for use as an isotype control with this antibody.
ICC/IF	★★★★★ (2)	1/50 - 1/100.
WB	★★★★★ (1)	1/1000 - 1/10000. Predicted molecular weight: 22 kDa.
IHC-P		1/50 - 1/100. Perform heat mediated antigen retrieval with citrate buffer pH 6 before commencing with IHC staining protocol.

ターゲット情報

機能	Involved in transport from the endoplasmic reticulum to the Golgi apparatus. Activated by the guanine nucleotide exchange factor PREB. Involved in the selection of the protein cargo and the assembly of the COPII coat complex.
組織特異性	Expressed in many tissues including small intestine, liver, muscle and brain.
関連疾患	Defects in SAR1B are the cause of chylomicron retention disease (CMRD) [MIM:246700]; also known as Anderson disease (ANDD). CMRD is an autosomal recessive disorder of severe fat malabsorption associated with failure to thrive in infancy. The condition is characterized by deficiency of fat-soluble vitamins, low blood cholesterol levels, and a selective absence of chylomicrons from blood. Affected individuals accumulate chylomicron-like particles in membrane-bound compartments of enterocytes, which contain large cytosolic lipid droplets.
配列類似性	Belongs to the small GTPase superfamily. SAR1 family.
細胞内局在	Endoplasmic reticulum membrane. Golgi apparatus > Golgi stack membrane. Associated with the endoplasmic reticulum and Golgi stacks, in particular in the juxta-nuclear Golgi region.

画像



Western blot - Anti-SAR1B antibody [EPR10105(B)] (ab155278)

All lanes : Anti-SAR1B antibody [EPR10105(B)] (ab155278) at 1/1000 dilution

Lane 1 : 293T cell lysate

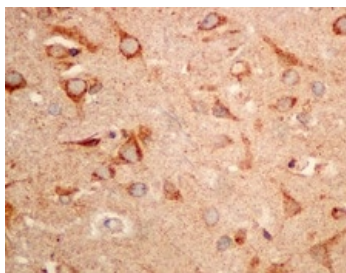
Lane 2 : Fetal liver tissue lysate

Lane 3 : Fetal brain tissue lysate

Lane 4 : Human skeletal muscle tissue lysate

Lysates/proteins at 10 µg per lane.

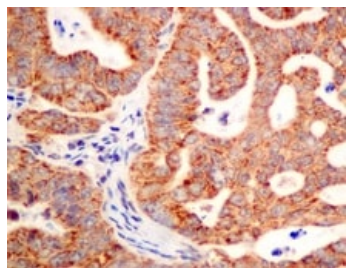
Predicted band size: 22 kDa



Immunohistochemistry (Formalin/PFA-fixed paraffin-embedded sections) - Anti-SAR1B antibody [EPR10105(B)] (ab155278)

Immunohistochemical analysis of paraffin embedded Human brain tissue labeling SAR1B with ab155278 at 1/50 dilution.

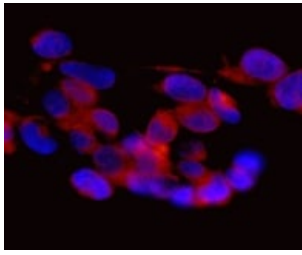
Perform heat mediated antigen retrieval with citrate buffer pH 6 before commencing with IHC staining protocol.



Immunohistochemistry (Formalin/PFA-fixed paraffin-embedded sections) - Anti-SAR1B antibody [EPR10105(B)] (ab155278)

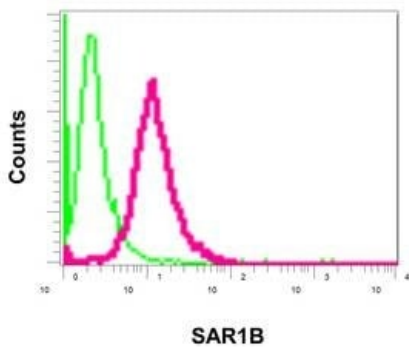
Immunohistochemical analysis of paraffin embedded Human gastric carcinoma tissue labeling SAR1B with ab155278 at 1/50 dilution.

Perform heat mediated antigen retrieval with citrate buffer pH 6 before commencing with IHC staining protocol.



Immunofluorescence analysis of 293T cells labeling SAR1B with ab155278 at a 1/50 dilution.

Immunocytochemistry/ Immunofluorescence - Anti-SAR1B antibody [EPR10105(B)] (ab155278)



Intracellular flow cytometric analysis of permeabilized 293T cells using ab155278 at a 1/10 dilution (red) or a rabbit IgG (negative) (green).

Flow Cytometry (Intracellular) - Anti-SAR1B antibody [EPR10105(B)] (ab155278)

Why choose a recombinant antibody?



Anti-SAR1B antibody [EPR10105(B)] (ab155278)

Please note: All products are "FOR RESEARCH USE ONLY. NOT FOR USE IN DIAGNOSTIC PROCEDURES"

Our Promise to you: Quality guaranteed and expert technical support

- Replacement or refund for products not performing as stated on the datasheet
- Valid for 12 months from date of delivery

- Response to your inquiry within 24 hours
- We provide support in Chinese, English, French, German, Japanese and Spanish
- Extensive multi-media technical resources to help you
- We investigate all quality concerns to ensure our products perform to the highest standards

If the product does not perform as described on this datasheet, we will offer a refund or replacement. For full details of the Abpromise, please visit <https://www.abcam.co.jp/abpromise> or contact our technical team.

Terms and conditions

- Guarantee only valid for products bought direct from Abcam or one of our authorized distributors