


Anti-SAR1 antibody ab125871

3 References [画像数 2](#)

医薬用外劇物

製品の概要

製品名	Anti-SAR1 antibody
製品の詳細	Rabbit polyclonal to SAR1
由来種	Rabbit
アプリケーション	適用あり: WB, ICC/IF
種交差性	交差種: Human 交差が予測される動物種: Mouse, Rat, Cow, Pig, Xenopus laevis, Zebrafish 
免疫原	Recombinant fragment, corresponding to a region within N terminal amino acids 6-180 of Human SAR1 (Q9NR31).
ポジティブ・コントロール	293T and A431 whole cell lysates; A431 cells.
特記事項	<p>The Life Science industry has been in the grips of a reproducibility crisis for a number of years. Abcam is leading the way in addressing this with our range of recombinant monoclonal antibodies and knockout edited cell lines for gold-standard validation. Please check that this product meets your needs before purchasing.</p> <p>If you have any questions, special requirements or concerns, please send us an inquiry and/or contact our Support team ahead of purchase. Recommended alternatives for this product can be found below, along with publications, customer reviews and Q&As</p>

製品の特性

製品の状態	Liquid
保存方法	Shipped at 4°C. Upon delivery aliquot and store at -20°C or -80°C. Avoid repeated freeze / thaw cycles.
バッファー	pH: 7.00 Preservative: 0.01% Thimerosal (merthiolate) Constituents: 78.99% PBS, 1% BSA, 20% Glycerol (glycerin, glycerine)
精製度	Immunogen affinity purified
特記事項(精製)	ab125871 is purified by antigen-affinity chromatography.
ポリ/モノ	ポリクローナル
アイソタイプ	IgG

アプリケーション

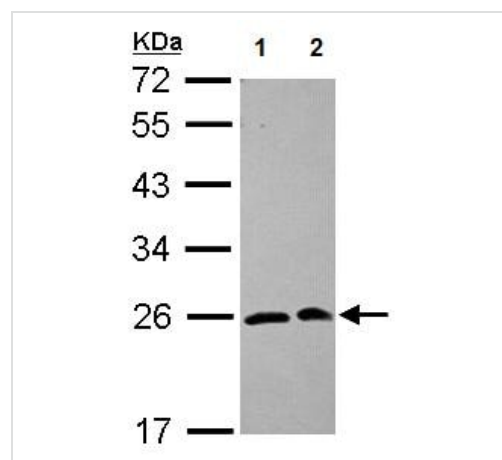
The Abpromise guarantee Abpromise保証は、次のテスト済みアプリケーションにおけるab125871の使用に適用されます
アプリケーションノートには、推奨の開始希釈率がありますが、適切な希釈率につきましてはご確認ください。

アプリケーション	Abreviews	特記事項
WB		1/500 - 1/3000. Predicted molecular weight: 22 kDa.
ICC/IF		1/100 - 1/500.

ターゲット情報

機能	Involved in transport from the endoplasmic reticulum to the Golgi apparatus (By similarity). Required to maintain SEC16A localization at discrete locations on the ER membrane perhaps by preventing its dissociation. SAR1A-GTP-dependent assembly of SEC16A on the ER membrane forms an organized scaffold defining endoplasmic reticulum exit sites (ERES).
配列類似性	Belongs to the small GTPase superfamily. SAR1 family.
細胞内局在	Endoplasmic reticulum. Golgi apparatus.

画像



Western blot - Anti-SAR1 antibody (ab125871)

All lanes : Anti-SAR1 antibody (ab125871) at 1/1000 dilution

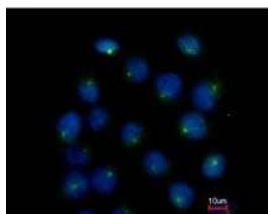
Lane 1 : 293T whole cell lysate

Lane 2 : A431 whole cell lysate

Lysates/proteins at 30 µg per lane.

Predicted band size: 22 kDa

12% SDS PAGE



ab125871, at 1/500, staining SAR1 in methanol-fixed A431 cells by Immunofluorescence. Lower image is co-stained with Hoechst 33342.

Immunocytochemistry/ Immunofluorescence - Anti-SAR1 antibody (ab125871)

Please note: All products are "FOR RESEARCH USE ONLY. NOT FOR USE IN DIAGNOSTIC PROCEDURES"

Our Abpromise to you: Quality guaranteed and expert technical support

- Replacement or refund for products not performing as stated on the datasheet
- Valid for 12 months from date of delivery
- Response to your inquiry within 24 hours
- We provide support in Chinese, English, French, German, Japanese and Spanish
- Extensive multi-media technical resources to help you
- We investigate all quality concerns to ensure our products perform to the highest standards

If the product does not perform as described on this datasheet, we will offer a refund or replacement. For full details of the Abpromise, please visit <https://www.abcam.co.jp/abpromise> or contact our technical team.

Terms and conditions

- Guarantee only valid for products bought direct from Abcam or one of our authorized distributors