

### Anti-SAMHD1 antibody [OT11F9] ab117908

KO 評価済

3 References [画像数 6](#)

#### 製品の概要

製品名	Anti-SAMHD1 antibody [OT11F9]
製品の詳細	Mouse monoclonal [OT11F9] to SAMHD1
由来種	Mouse
アプリケーション	<b>適用あり:</b> IHC-P, WB, Flow Cyt (Intra)
種交差性	<b>交差種:</b> Mouse, Human
免疫原	Recombinant full length protein corresponding to Human SAMHD1 aa 1 to the C-terminus. Produced in HEK-293T cells (NP_056289). Database link: <a href="#">Q9Y3Z3</a>
ポジティブ・コントロール	WB: HEK-293T cells transfected with pCMV6-ENTRY SAMHD1 cDNA; HAP1 and K562 cell lysates; HepG2, HeLa, SVT2, Jurkat and MCF7 cell extracts; Mouse brain extract. Flow Cyt (Intra): HeLa cells. IHC-P: Human spleen tissue.
特記事項	Clone OT11F9 (formerly 1F9).  The Life Science industry has been in the grips of a reproducibility crisis for a number of years. Abcam is leading the way in addressing this with our range of recombinant monoclonal antibodies and knockout edited cell lines for gold-standard validation. Please check that this product meets your needs before purchasing.  If you have any questions, special requirements or concerns, please send us an inquiry and/or contact our Support team ahead of purchase. Recommended alternatives for this product can be found below, along with publications, customer reviews and Q&As

#### 製品の特性

製品の状態	Liquid
保存方法	Shipped at 4°C. Store at +4°C short term (1-2 weeks). Upon delivery aliquot. Store at -20°C. Avoid freeze / thaw cycle.
バッファー	pH: 7.30 Preservative: 0.02% Sodium azide Constituents: PBS, 1% BSA, 50% Glycerol
精製度	Affinity purified

特記事項(精製)	Purified from cell culture supernatant.
ポリモノ	モノクローナル
クローン名	OT11F9
アイソタイプ	IgG1

## アプリケーション

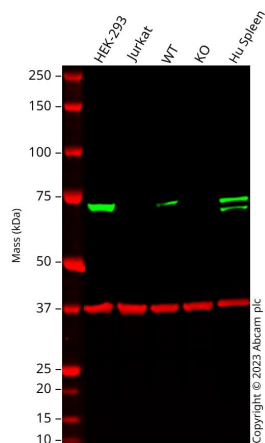
The Abpromise guarantee **Abpromise保証は、次のテスト済みアプリケーションにおけるab117908の使用に適用されず**  
 アプリケーションノートには、推奨の開始希釈率がありますが、適切な希釈率につきましてはご検討ください。

アプリケーション	Abreviews	特記事項
IHC-P		Use a concentration of 5 µg/ml.
WB		1/2000. Predicted molecular weight: 72 kDa.
Flow Cyt (Intra)		1/100.

## ターゲット情報

機能	Putative nuclease involved in innate immune response by acting as a negative regulator of the cell-intrinsic antiviral response. May play a role in mediating proinflammatory responses to TNF-alpha signaling.
組織特異性	Expressed in heart, skeletal muscle, spleen, liver, small intestine, placenta, lung and peripheral blood leukocytes. No expression is seen in brain and thymus.
関連疾患	Defects in SAMHD1 are the cause of Aicardi-Goutieres syndrome type 5 (AGS5) [MIM:612952]. A form of Aicardi-Goutieres syndrome, a genetically heterogeneous disease characterized by cerebral atrophy, leukoencephalopathy, intracranial calcifications, chronic cerebrospinal fluid (CSF) lymphocytosis, increased CSF alpha-interferon, and negative serologic investigations for common prenatal infection. Clinical features as thrombocytopenia, hepatosplenomegaly and elevated hepatic transaminases along with intermittent fever may erroneously suggest an infective process. Severe neurological dysfunctions manifest in infancy as progressive microcephaly, spasticity, dystonic posturing and profound psychomotor retardation. Death often occurs in early childhood.
配列類似性	Belongs to the SAMHD1 family. Contains 1 HD domain. Contains 1 SAM (sterile alpha motif) domain.
細胞内局在	Nucleus.

## 画像



Western blot - Anti-SAMHD1 antibody [OT11F9] (ab117908)

**All lanes** : Anti-SAMHD1 antibody [OT11F9] (ab117908) at 1/2000 dilution

**Lane 1** : HEK-293 cell lysate

**Lane 2** : Jurkat cell lysate

**Lane 3** : Wild-type HAP1 cell lysate

**Lane 4** : SAMHD1 knockout HAP1 cell lysate

**Lane 5** : Human Spleen cell lysate

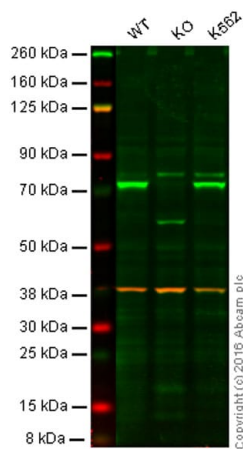
Lysates/proteins at 20 µg per lane.

Performed under reducing conditions.

**Predicted band size:** 72 kDa

**Observed band size:** 73 kDa

Western blot: Anti-SAMHD1 antibody [OT11F9] (ab117908) staining at 1/2000 dilution, shown in green; Rabbit Anti-GAPDH antibody [EPR16891] (**ab181602**) loading control staining at 1/20000 dilution, shown in red. In Western blot, ab117908 was shown to bind specifically to SAMHD1. A band was observed at 73 kDa in wild-type HEK-293 cell lysates with no signal observed at this size in SAMHD1 knockout cell line. To generate this image, wild-type and SAMHD1 knockout HEK-293 cell lysates were analysed. First, samples were run on an SDS-PAGE gel then transferred onto a nitrocellulose membrane. Membranes were blocked in 3 % milk in TBS-0.1 % Tween<sup>®</sup> 20 (TBS-T) before incubation with primary antibodies overnight at 4 °C. Blots were washed four times in TBS-T, incubated with secondary antibodies for 1 h at room temperature, washed again four times then imaged. Secondary antibodies used were Goat anti-Mouse IgG H&L 800CW and Goat anti-Rabbit IgG H&L 680RD at 1/20000 dilution.



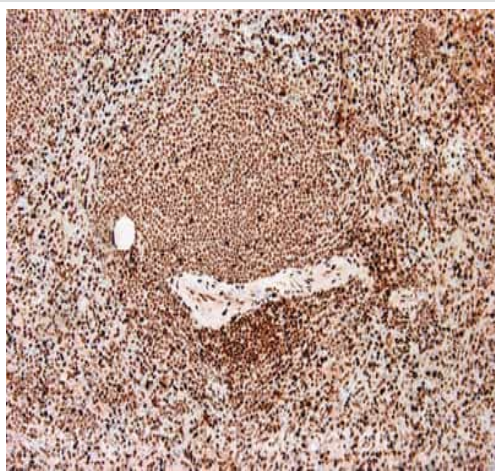
Western blot - Anti-SAMHD1 antibody [OT11F9] (ab117908)

**Lane 1:** Wild-type HAP1 cell lysate (20 µg)

**Lane 2:** SAMHD1 knockout HAP1 cell lysate (20 µg)

**Lane 3:** K562 cell lysate (20 µg)

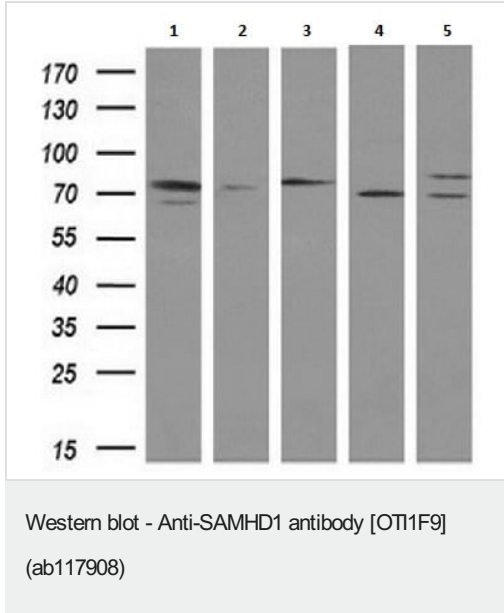
**Lanes 1 - 3:** Merged signal (red and green). Green - ab117908 observed at 70 kDa. Red - loading control, **ab181602**, observed at 37 kDa. ab117908 was shown to recognize SAMHD1 when SAMHD1 knockout samples were used, along with additional cross-reactive bands. Wild-type and SAMHD1 knockout samples were subjected to SDS-PAGE. ab117908 and **ab181602** (loading control to GAPDH) were diluted 1/2000 and 1/10000 respectively and incubated overnight at 4°C. Blots were developed with Goat anti-Mouse IgG H&L (IRDye® 800CW) preadsorbed **ab216772** and Goat Anti-Rabbit IgG H&L (IRDye® 680RD) preadsorbed **ab216777** secondary antibodies at 1/10000 dilution for 1 h at room temperature before imaging.



Immunohistochemistry (Formalin/PFA-fixed paraffin-embedded sections) - Anti-SAMHD1 antibody [OT11F9] (ab117908)

IHC image of SAMHD1 staining in Human normal spleen formalin fixed paraffin embedded tissue section, performed on a Leica Bond™ system using the standard protocol F. The section was pre-treated using heat mediated antigen retrieval with sodium citrate buffer (pH6, epitope retrieval solution 1) for 20 mins. The section was then incubated with ab117908, 5µg/ml, for 15 mins at room temperature and detected using an HRP conjugated compact polymer system. DAB was used as the chromogen. The section was then counterstained with haematoxylin and mounted with DPX.

For other IHC staining systems (automated and non-automated) customers should optimize variable parameters such as antigen retrieval conditions, primary antibody concentration and antibody incubation times.



**All lanes :** Anti-SAMHD1 antibody [OT11F9] (ab117908) at 1/200 dilution

**Lane 1 :** HepG2 (human liver hepatocellular carcinoma cell line) cell extract

**Lane 2 :** HeLa (human epithelial cell line from cervix adenocarcinoma) cell extract

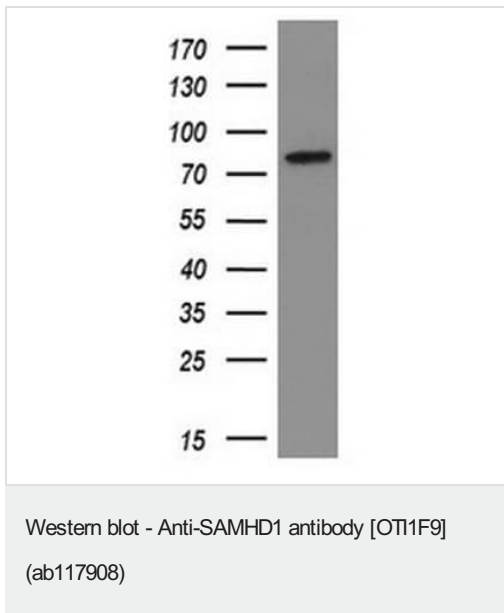
**Lane 3 :** SVT2 cell extract

**Lane 4 :** Jurkat (human T cell leukemia cell line from peripheral blood) cell extract

**Lane 5 :** MCF7 (human breast adenocarcinoma cell line) cell extract

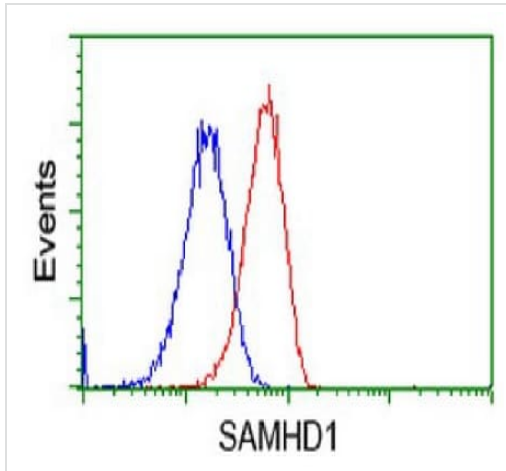
Lysates/proteins at 10 µg per lane.

**Predicted band size:** 72 kDa



Anti-SAMHD1 antibody [OT11F9] (ab117908) at 1/200 dilution + Mouse brain extract at 10 µg

**Predicted band size:** 72 kDa



Flow cytometric analysis of HeLa (human epithelial cell line from cervix adenocarcinoma) cells stained for SAMHD1 using ab117908 (red) at 1/100 dilution, compared to a nonspecific negative control (blue).

Flow Cytometry (Intracellular) - Anti-SAMHD1 antibody [OT11F9] (ab117908)

**Please note:** All products are "FOR RESEARCH USE ONLY. NOT FOR USE IN DIAGNOSTIC PROCEDURES"

### Our Abpromise to you: Quality guaranteed and expert technical support

- Replacement or refund for products not performing as stated on the datasheet
- Valid for 12 months from date of delivery
- Response to your inquiry within 24 hours
- We provide support in Chinese, English, French, German, Japanese and Spanish
- Extensive multi-media technical resources to help you
- We investigate all quality concerns to ensure our products perform to the highest standards

If the product does not perform as described on this datasheet, we will offer a refund or replacement. For full details of the Abpromise, please visit <https://www.abcam.co.jp/abpromise> or contact our technical team.

### Terms and conditions

- Guarantee only valid for products bought direct from Abcam or one of our authorized distributors