

Anti-SAF-B2 antibody [6F7] ab67344

画像数 1

製品の概要

| | |
|--------------|---|
| 製品名 | Anti-SAF-B2 antibody [6F7] |
| 製品の詳細 | Mouse monoclonal [6F7] to SAF-B2 |
| 由来種 | Mouse |
| アプリケーション | 適用あり: IHC-P |
| 種交差性 | 交差種: Human |
| 免疫原 | Synthetic peptide corresponding to Human SAF-B2 aa 345-357. Sequence: PEARDSKEDGRKF |
| |  Run BLAST with  Run BLAST with |
| ポジティブ・コントロール | Human brain cortex tissue. |
| 特記事項 | <p>The Life Science industry has been in the grips of a reproducibility crisis for a number of years. Abcam is leading the way in addressing this with our range of recombinant monoclonal antibodies and knockout edited cell lines for gold-standard validation. Please check that this product meets your needs before purchasing.</p> <p>If you have any questions, special requirements or concerns, please send us an inquiry and/or contact our Support team ahead of purchase. Recommended alternatives for this product can be found below, along with publications, customer reviews and Q&As</p> |

製品の特性

| | |
|--------|---|
| 製品の状態 | Liquid |
| 保存方法 | Shipped at 4°C. Upon delivery aliquot. Store at -20°C. Avoid freeze / thaw cycle. |
| バッファー | pH: 7.4 Constituent: PBS |
| 精製度 | Protein G purified |
| ポリ/モノ | モノクローナル |
| クローン名 | 6F7 |
| アイソタイプ | IgG1 |

アプリケーション

The Abpromise guarantee **Abpromise保証は、次のテスト済みアプリケーションにおけるab67344の使用に適用されます**
 アプリケーションノートには、推奨の開始希釈率がありますが、適切な希釈率につきましてはご検討ください。

| アプリケーション | Abreviews | 特記事項 |
|----------|-----------|------|
| IHC-P | | |

追加情報

ICC/IF: Use at an assay dependent dilution.
 IHC-P: Use at a concentration of 5 µg/ml.
 IP: Use at an assay dependent dilution.
 WB: Use at an assay dependent dilution. Predicted molecular weight: 108 kDa.

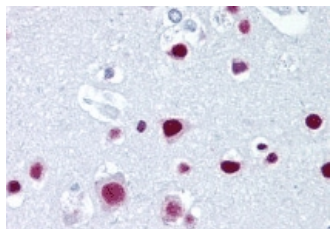
N.B. on SDS PAGE gels, Scaffold attachment factor B2 runs as an approximately 130 kDa protein. This aberrant migration is due to a large number of charged amino acid residues.

Not yet tested in other applications.
 Optimal dilutions/concentrations should be determined by the end user.

ターゲット情報

| | |
|-------|---|
| 機能 | Binds to scaffold/matrix attachment region (S/MAR) DNA. Can function as an estrogen receptor corepressor and can also inhibit cell proliferation. |
| 組織特異性 | Expressed at high levels in the CNS and at low levels in the liver. Expressed in a wide number of breast cancer cell lines. |
| 配列類似性 | Contains 1 RRM (RNA recognition motif) domain. Contains 1 SAP domain. |
| 翻訳後修飾 | Phosphorylated upon DNA damage, probably by ATM or ATR. |
| 細胞内局在 | Cytoplasm. Nucleus. |

画像



ab67344 at 5µg/ml dilution staining SAF-B2 in human brain cortex by Immunohistochemistry, Formalin-fixed, Paraffin-embedded tissue.

Immunohistochemistry (Formalin/PFA-fixed paraffin-embedded sections) - Anti-SAF-B2 antibody [6F7] (ab67344)

Please note: All products are "FOR RESEARCH USE ONLY. NOT FOR USE IN DIAGNOSTIC PROCEDURES"

Our Abpromise to you: Quality guaranteed and expert technical support

- Replacement or refund for products not performing as stated on the datasheet
- Valid for 12 months from date of delivery
- Response to your inquiry within 24 hours

- We provide support in Chinese, English, French, German, Japanese and Spanish
- Extensive multi-media technical resources to help you
- We investigate all quality concerns to ensure our products perform to the highest standards

If the product does not perform as described on this datasheet, we will offer a refund or replacement. For full details of the Abpromise, please visit <https://www.abcam.co.jp/abpromise> or contact our technical team.

Terms and conditions

- Guarantee only valid for products bought direct from Abcam or one of our authorized distributors