


### Anti-SAE1 antibody ab97523

2 References [画像数 3](#)

**医薬用外劇物**

#### 製品の概要

製品名	Anti-SAE1 antibody
製品の詳細	Rabbit polyclonal to SAE1
由来種	Rabbit
アプリケーション	<b>適用あり:</b> WB, IHC-P, ICC/IF
種交差性	<b>交差種:</b> Human <b>交差が予測される動物種:</b> Mouse, Rat, Cow 
免疫原	Recombinant fragment, corresponding to a region within amino acids 3-217 of Human SAE1 (AAH00344)
ポジティブ・コントロール	293T, A431, H1299, HeLa, HepG2, MOLT4 and Raji cells, A549 Xenograft tissue.
特記事項	<p>The Life Science industry has been in the grips of a reproducibility crisis for a number of years. Abcam is leading the way in addressing this with our range of recombinant monoclonal antibodies and knockout edited cell lines for gold-standard validation. Please check that this product meets your needs before purchasing.</p> <p>If you have any questions, special requirements or concerns, please send us an inquiry and/or contact our Support team ahead of purchase. Recommended alternatives for this product can be found below, along with publications, customer reviews and Q&amp;As</p>

#### 製品の特性

製品の状態	Liquid
保存方法	Shipped at 4°C. Upon delivery aliquot. Store at -20°C or -80°C. Avoid freeze / thaw cycle.
バッファー	pH: 7.00 Preservative: 0.01% Thimerosal (merthiolate) Constituents: 1.21% Tris, 0.75% Glycine, 20% Glycerol (glycerin, glycerine)
精製度	Immunogen affinity purified
ポリ/モノ	ポリクローナル
アイソタイプ	IgG

## アプリケーション

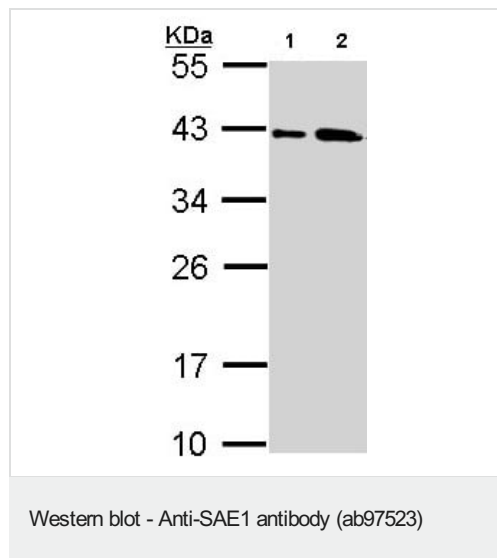
The Abpromise guarantee **Abpromise保証は、次のテスト済みアプリケーションにおけるab97523の使用に適用されます**  
アプリケーションノートには、推奨の開始希釈率がありますが、適切な希釈率につきましてはご確認ください。

アプリケーション	Abreviews	特記事項
WB		1/500 - 1/3000. Predicted molecular weight: 38 kDa.
IHC-P		1/100 - 1/250.
ICC/IF		1/100 - 1/200.

## ターゲット情報

機能	The heterodimer acts as a E1 ligase for SUMO1, SUMO2, SUMO3, and probably SUMO4. It mediates ATP-dependent activation of SUMO proteins followed by formation of a thioester bond between a SUMO protein and a conserved active site cysteine residue on UBA2/SAE2.
組織特異性	Expression level increases during S phase and drops in G2 phase (at protein level).
パスウェイ	Protein modification; protein sumoylation.
配列類似性	Belongs to the ubiquitin-activating E1 family.
翻訳後修飾	Phosphorylated upon DNA damage, probably by ATM or ATR.
細胞内局在	Nucleus.

## 画像



**All lanes :** Anti-SAE1 antibody (ab97523) at 1/1000 dilution

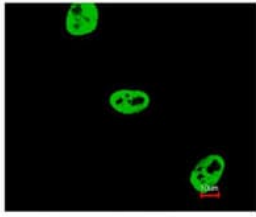
**Lane 1 :** A431 whole cell lysate

**Lane 2 :** H1299 whole cell lysate

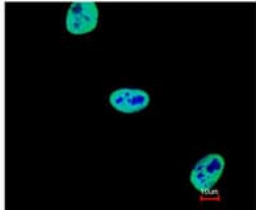
Lysates/proteins at 30 µg per lane.

**Predicted band size:** 38 kDa

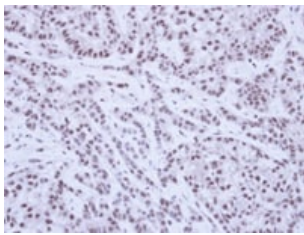
10% SDS-PAGE.



Immunofluorescence analysis of paraformaldehyde-fixed HeLa, using ab97523 at 1/200 dilution. Lower image is merged with DNA probe.



Immunocytochemistry/ Immunofluorescence - Anti-SAE1 antibody (ab97523)



Immunohistochemical analysis of paraffin-embedded A549 Xenograft, using ab97523 at 1/100 dilution.

Immunohistochemistry (Formalin/PFA-fixed paraffin-embedded sections) - Anti-SAE1 antibody (ab97523)

**Please note:** All products are "FOR RESEARCH USE ONLY. NOT FOR USE IN DIAGNOSTIC PROCEDURES"

### **Our Abpromise to you: Quality guaranteed and expert technical support**

---

- Replacement or refund for products not performing as stated on the datasheet
- Valid for 12 months from date of delivery
- Response to your inquiry within 24 hours
  
- We provide support in Chinese, English, French, German, Japanese and Spanish
- Extensive multi-media technical resources to help you
- We investigate all quality concerns to ensure our products perform to the highest standards

If the product does not perform as described on this datasheet, we will offer a refund or replacement. For full details of the Abpromise, please visit <https://www.abcam.co.jp/abpromise> or contact our technical team.

## Terms and conditions

---

- Guarantee only valid for products bought direct from Abcam or one of our authorized distributors