


Anti-SA2 antibody ab4464

5 References [画像数 2](#)

製品の概要

| | |
|--------------|---|
| 製品名 | Anti-SA2 antibody |
| 製品の詳細 | Goat polyclonal to SA2 |
| 由来種 | Goat |
| アプリケーション | 適用あり: WB, ICC |
| 種交差性 | 交差種: Mouse, Human 交差が予測される動物種: Rat, Rabbit, Cow, Dog, Pig, Chimpanzee, Rhesus monkey, Gorilla, Orangutan  |
| 免疫原 | Synthetic peptide (Human) - 31 amino acids which represent a portion of human SA 2 encoded within exon 31. |
| ポジティブ・コントロール | WB: HeLa, HEK293T, Jurkat, and mouse TCMK-1 cells. ICC: HeLa cells. |
| 特記事項 | <p>The Life Science industry has been in the grips of a reproducibility crisis for a number of years. Abcam is leading the way in addressing this with our range of recombinant monoclonal antibodies and knockout edited cell lines for gold-standard validation. Please check that this product meets your needs before purchasing.</p> <p>If you have any questions, special requirements or concerns, please send us an inquiry and/or contact our Support team ahead of purchase. Recommended alternatives for this product can be found below, along with publications, customer reviews and Q&As</p> |

製品の特性

| | |
|--------|---|
| 製品の状態 | Liquid |
| 保存方法 | Shipped at 4°C. Upon delivery aliquot and store at -20°C. Avoid freeze / thaw cycles. |
| バッファー | <p>pH: 7</p> <p>Preservative: 0.1% Sodium azide</p> <p>Constituents: 0.021% PBS, 1.764% Sodium citrate, 1.815% Tris</p> |
| 精製度 | Immunogen affinity purified |
| ポリ/モノ | ポリクローナル |
| アイソタイプ | IgG |

アプリケーション

The Abpromise guarantee

Abpromise保証は、次のテスト済みアプリケーションにおけるab4464の使用に適用されます

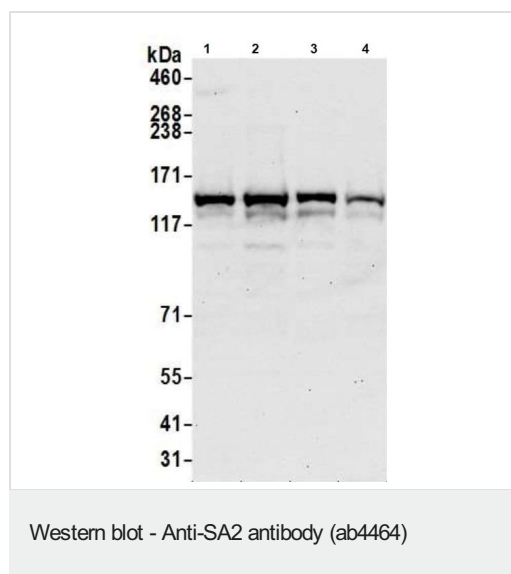
アプリケーションノートには、推奨の開始希釈率がありますが、適切な希釈率につきましてはご検討ください。

| アプリケーション | Abreviews | 特記事項 |
|----------|-----------|--|
| WB | | 1/1000 - 1/10000. Detects a band of approximately 134 kDa (predicted molecular weight: 134 kDa). |
| ICC | | 1/500 - 1/2000. |

ターゲット情報

| | |
|-------|--|
| 機能 | Component of cohesin complex, a complex required for the cohesion of sister chromatids after DNA replication. The cohesin complex apparently forms a large proteinaceous ring within which sister chromatids can be trapped. At anaphase, the complex is cleaved and dissociates from chromatin, allowing sister chromatids to segregate. The cohesin complex may also play a role in spindle pole assembly during mitosis. |
| 配列類似性 | Belongs to the SCC3 family. Contains 1 SCD (stromalin conservative) domain. |
| 翻訳後修飾 | Phosphorylated by PLK. The large dissociation of cohesin from chromosome arms during prophase is partly due to its phosphorylation. |
| 細胞内局在 | Nucleus. Chromosome. Chromosome > centromere. Associates with chromatin. Before prophase it is scattered along chromosome arms. During prophase, most of cohesin complexes dissociate from chromatin probably because of phosphorylation by PLK, except at centromeres, where cohesin complexes remain. At anaphase, the RAD21 subunit of cohesin is cleaved, leading to the dissociation of the complex from chromosomes, allowing chromosome separation. In germ cells, cohesin complex dissociates from chromatin at prophase I, and may be replaced by a meiosis-specific cohesin complex. |

画像



All lanes : Anti-SA2 antibody (ab4464) at 1/10000 dilution

Lane 1 : HeLa Whole cell lysate

Lane 2 : HEK293T Whole cell lysate

Lane 3 : Jurkat Whole cell lysate

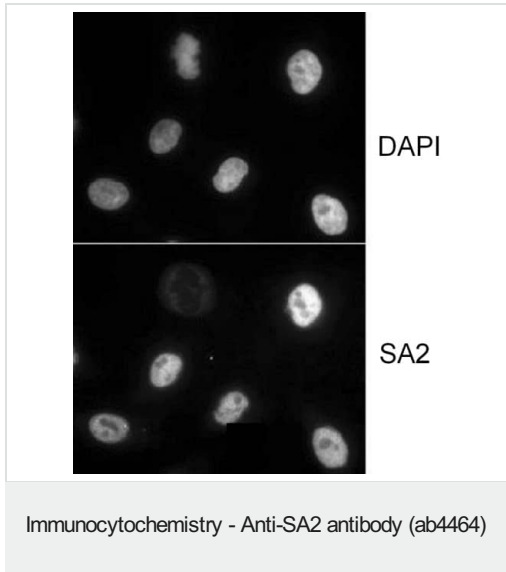
Lane 4 : mouse TCMK-1 cells Whole cell lysate

Lysates/proteins at 50 µg per lane.

Predicted band size: 134 kDa

Detection: Chemiluminescence with an exposure time of 30

seconds.



Immunocytochemistry analysis of HeLa cells (extracted for 5 minutes at 4°C in 0.5% Triton in CSK buffer) labelling SA2 with ab4464 at 1µg/ml.

Please note: All products are "FOR RESEARCH USE ONLY. NOT FOR USE IN DIAGNOSTIC PROCEDURES"

Our Abpromise to you: Quality guaranteed and expert technical support

- Replacement or refund for products not performing as stated on the datasheet
- Valid for 12 months from date of delivery
- Response to your inquiry within 24 hours
- We provide support in Chinese, English, French, German, Japanese and Spanish
- Extensive multi-media technical resources to help you
- We investigate all quality concerns to ensure our products perform to the highest standards

If the product does not perform as described on this datasheet, we will offer a refund or replacement. For full details of the Abpromise, please visit <https://www.abcam.co.jp/abpromise> or contact our technical team.

Terms and conditions

- Guarantee only valid for products bought direct from Abcam or one of our authorized distributors