





# Anti-S6K1 antibody ab14708

**4 References** [画像数 3](#)

### 製品の概要

製品名	Anti-S6K1 antibody
製品の詳細	Goat polyclonal to S6K1
由来種	Goat
アプリケーション	<b>適用あり:</b> WB, IHC-P
種交差性	<b>交差種:</b> Mouse, Human <b>交差が予測される動物種:</b> Rat, Rabbit, Cow, Dog, Xenopus laevis 
免疫原	Synthetic peptide: MISKRPEHLRMNL, corresponding to amino acids 490-502 of S6K1.  <a href="#">Run BLAST with</a>  <a href="#">Run BLAST with</a> 
特記事項	<p>The Life Science industry has been in the grips of a reproducibility crisis for a number of years. Abcam is leading the way in addressing this with our range of recombinant monoclonal antibodies and knockout edited cell lines for gold-standard validation. Please check that this product meets your needs before purchasing.</p> <p>If you have any questions, special requirements or concerns, please send us an inquiry and/or contact our Support team ahead of purchase. Recommended alternatives for this product can be found below, along with publications, customer reviews and Q&amp;As</p>

### 製品の特性

製品の状態	Liquid
保存方法	Shipped at 4°C. Upon delivery aliquot and store at -20°C or -80°C. Avoid repeated freeze / thaw cycles.
バッファー	pH: 7.30 Preservative: 0.02% Sodium azide Constituents: Tris buffered saline, 0.5% BSA
精製度	Immunogen affinity purified
特記事項 (精製)	Purified from goat serum by ammonium sulphate precipitation followed by antigen affinity chromatography using the immunizing peptide.
ポリ/モノ	ポリクローナル
アイソタイプ	IgG

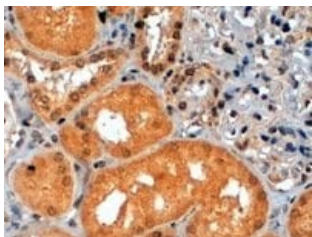
## アプリケーション

**The Abpromise guarantee** Abpromise保証は、 次のテスト済みアプリケーションにおけるab14708の使用に適用されます  
アプリケーションノートには、推奨の開始希釈率がありますが、適切な希釈率につきましてはご検討ください。

アプリケーション	Abreviews	特記事項
WB		Use a concentration of 0.05 - 0.1 µg/ml. Detects a band of approximately 65-70 kDa (predicted molecular weight: 60 kDa). A 1 hour primary incubation is recommended for this product.
IHC-P		Use a concentration of 2 - 4 µg/ml. Perform heat mediated antigen retrieval with citrate buffer pH 6 before commencing with IHC staining protocol.

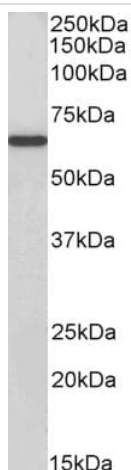
## ターゲット情報

機能	Acts to integrate nutrient and growth factor signals in regulation of protein synthesis, cell proliferation, cell growth, cell cycle progression and cell survival. Downstream effector of the mTOR signaling pathway. Phosphorylates specifically ribosomal protein S6 in response to insulin or several classes of mitogens. During translation initiation, the inactive form associates with the eIF-3 complex under conditions of nutrient depletion. Mitogenic stimulation leads to phosphorylation and dissociation from the eIF-3 complex and the free activated form can phosphorylate other translational targets including EIF4B. Promotes protein synthesis by phosphorylating PDCD4 at 'Ser-67' and targeting it for degradation. Phosphorylates RICTOR leading to regulation of mammalian target of rapamycin complex 2 (mTORC2) signaling; probably phosphorylates RICTOR at 'Thr-1135'. Phosphorylates IRS1 at multiple serine residues coupled with insulin resistance; probably phosphorylates IRS1 at 'Ser-270'. Required for TNF-alpha induced IRS-1 degradation. Phosphorylates EEF2K in response to IGF1 and inhibits EEF2K activity. Phosphorylates BAD at 'Ser-99' in response to IGF1 leading to BAD inactivation and inhibition of BAD-induced apoptosis. Phosphorylates mitochondrial RMP leading to dissociation of a RMP:PPP1CC complex; probably phosphorylates RMP at 'Ser-99'. The free mitochondrial PPP1CC can dephosphorylate RPS6KB1 at Thr-412 which is proposed to be a negative feedback mechanism for the RPS6KB1 antiapoptotic function. Phosphorylates GSK3B at 'Ser-9' under conditions leading to loss of the TSC1-TSC2 complex. Phosphorylates POLDIP3.
組織特異性	Widely expressed.
配列類似性	Belongs to the protein kinase superfamily. AGC Ser/Thr protein kinase family. S6 kinase subfamily. Contains 1 AGC-kinase C-terminal domain. Contains 1 protein kinase domain.
ドメイン	The autoinhibitory domain is believed to block phosphorylation within the AGC-kinase C-terminal domain and the activation loop. The TOS (TOR signaling) motif is essential for activation by mTORC1.
翻訳後修飾	Phosphorylation at Thr-412 is regulated by mTORC1. The phosphorylation at this site is maintained by an agonist-dependent autophosphorylation mechanism.
細胞内局在	Cytoplasm; Nucleus. Cytoplasm and Cell junction > synapse > synaptosome. Mitochondrion outer membrane.



Immunohistochemistry (Formalin/PFA-fixed paraffin-embedded sections) - Anti-S6K1 antibody (ab14708)

ab14708 (2µg/ml) staining of paraffin embedded Human Kidney shows staining in the cytoplasm-rich PCT while less so in the DCT and no signals in the glomerulus. following steamed antigen retrieval with citrate buffer pH 6 and HRP-staining.



Western blot - Anti-S6K1 antibody (ab14708)

Anti-S6K1 antibody (ab14708) at 1 µg/ml + NIH3T3 cell lysate (in RIPA buffer). at 35 µg

**Predicted band size:** 60 kDa

Detected by chemiluminescence.



Western blot - Anti-S6K1 antibody (ab14708)

Anti-S6K1 antibody (ab14708) at 0.3 µg/ml + Human Placenta lysate (in RIPA buffer) at 35 µg

**Predicted band size:** 60 kDa

Detected by chemiluminescence.

**Please note:** All products are "FOR RESEARCH USE ONLY. NOT FOR USE IN DIAGNOSTIC PROCEDURES"

### Our Abpromise to you: Quality guaranteed and expert technical support

- Replacement or refund for products not performing as stated on the datasheet
- Valid for 12 months from date of delivery
- Response to your inquiry within 24 hours

- We provide support in Chinese, English, French, German, Japanese and Spanish
- Extensive multi-media technical resources to help you
- We investigate all quality concerns to ensure our products perform to the highest standards

If the product does not perform as described on this datasheet, we will offer a refund or replacement. For full details of the Abpromise, please visit <https://www.abcam.co.jp/abpromise> or contact our technical team.

#### **Terms and conditions**

---

- Guarantee only valid for products bought direct from Abcam or one of our authorized distributors