




Anti-S1P1/EDG1 antibody ab11424

★★★★★ [3 Abreviews](#) [28 References](#) [画像数 3](#)

製品の概要

製品名	Anti-S1P1/EDG1 antibody
製品の詳細	Rabbit polyclonal to S1P1/EDG1
由来種	Rabbit
特異性	ab11424 detects S1P1/EDG1 protein in transfected human cell samples. This antibody shows no cross-reactivity to S1P3.
アプリケーション	適用あり: IP, ICC/IF, IHC-P, WB, Flow Cyt, ICC
種交差性	交差種: Mouse, Rat, Human 交差が予測される動物種: Horse, Cow, Cat, Monkey 
免疫原	Synthetic peptide corresponding to Mouse S1P1/EDG1 aa 359-372. Sequence: SHPQKDDGDNPETI (Peptide available as ab39763) <div>  Run BLAST with  Run BLAST with </div>
ポジティブ・コントロール	WB: Rat brain tissue lysate; Neuro-2a cell lysate. ICC: CCL39 and Neuro-2a cells.
特記事項	<p>The Life Science industry has been in the grips of a reproducibility crisis for a number of years. Abcam is leading the way in addressing this with our range of recombinant monoclonal antibodies and knockout edited cell lines for gold-standard validation. Please check that this product meets your needs before purchasing.</p> <p>If you have any questions, special requirements or concerns, please send us an inquiry and/or contact our Support team ahead of purchase. Recommended alternatives for this product can be found below, along with publications, customer reviews and Q&As</p>

製品の特性

製品の状態	Liquid
保存方法	Shipped at 4°C. Store at +4°C short term (1-2 weeks). Upon delivery aliquot. Store at -20°C or -80°C. Avoid freeze / thaw cycle.
バッファー	Preservative: 0.05% Sodium azide Constituents: PBS, 1% BSA
精製度	Immunogen affinity purified

ポリ/モノ
アイソタイプ

ポリクローナル
IgG

アプリケーション

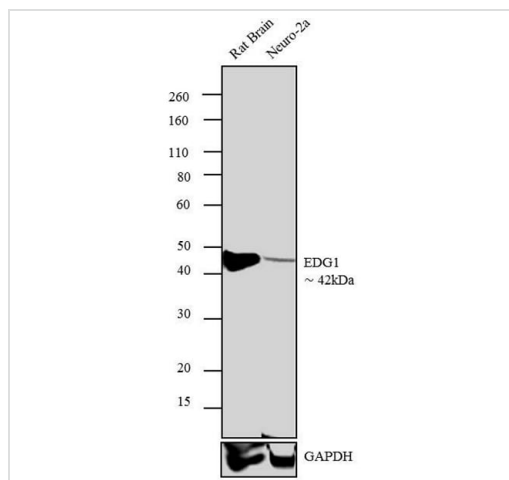
The Abpromise guarantee Abpromise保証は、次のテスト済みアプリケーションにおけるab11424の使用に適用されます
アプリケーションノートには、推奨の開始希釈率がありますが、適切な希釈率につきましてはご検討ください。

アプリケーション	Abreviews	特記事項
IP		Use at an assay dependent concentration.
ICC/IF		Use at an assay dependent concentration.
IHC-P		Use at an assay dependent concentration.
WB	★ ★ ★ ★ ★ (3)	Use a concentration of 1 µg/ml. Detects a band of approximately 44 kDa. Band represents recombinant S1P1 from transfected HEK293 cells.
Flow Cyt		Use at an assay dependent concentration. PubMed: 20733200 <u>ab171870</u> - Rabbit polyclonal IgG, is suitable for use as an isotype control with this antibody.
ICC		Use a concentration of 2 µg/ml.

ターゲット情報

機能	Receptor for the lysosphingolipid sphingosine 1-phosphate (S1P). S1P is a bioactive lysophospholipid that elicits diverse physiological effect on most types of cells and tissues. This inducible epithelial cell G-protein-coupled receptor may be involved in the processes that regulate the differentiation of endothelial cells. Seems to be coupled to the G(i) subclass of heteromeric G proteins.
組織特異性	Endothelial cells, and to a lesser extent, in vascular smooth muscle cells, fibroblasts, melanocytes, and cells of epithelioid origin.
配列類似性	Belongs to the G-protein coupled receptor 1 family.
翻訳後修飾	S1P-induced endothelial cell migration requires the PKB/AKT1-mediated phosphorylation of the third intracellular loop at the Thr-236 residue.
細胞内局在	Cell membrane.

画像



Western blot - Anti-S1P1/EDG1 antibody (ab11424)

Lane 1 : Anti-S1P1/EDG1 antibody (ab11424) at 2 µg/ml

Lane 2 : Anti-S1P1/EDG1 antibody (ab11424) at 2 mg/ml

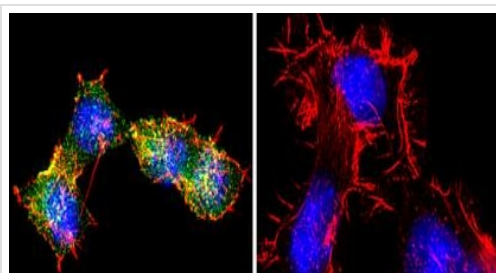
Lane 1 : Rat brain tissue extract

Lane 2 : Neuro-2a Cells

Secondary

All lanes : Goat anti-rabbit IgG (H+L), HRP conjugated at 0.4 µg/ml

Developed using the ECL technique.



Immunocytochemistry - Anti-S1P1/EDG1 antibody (ab11424)

Immunocytochemical analysis of Neuro-2a cells, labeling

S1P1/EDG1 with ab11424. Cells were fixed in 4%

paraformaldehyde for 10 minutes, permeabilized with 0.1% Triton™

X-100 for 10 minutes, and blocked with 1% BSA for 1 hour at room

temperature. Immunostaining with anti-EDG1 diluted 2µg/ml in 0.1%

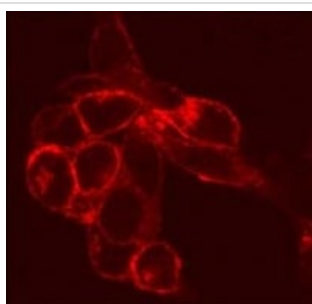
BSA for 3 hours at room temperature.

Green staining - ab11424

Blue staining - DAPI for nuclear localization

Red staining - F-actin

The right-most image is a control (no primary antibody staining).



Immunocytochemistry/ Immunofluorescence - Anti-S1P1/EDG1 antibody (ab11424)

ab11424 staining S1P1/EDG1 in transfected CCL39 cells by

Immunocytochemistry/ Immunofluorescence.

Our Abpromise to you: Quality guaranteed and expert technical support

- Replacement or refund for products not performing as stated on the datasheet
- Valid for 12 months from date of delivery
- Response to your inquiry within 24 hours

- We provide support in Chinese, English, French, German, Japanese and Spanish
- Extensive multi-media technical resources to help you
- We investigate all quality concerns to ensure our products perform to the highest standards

If the product does not perform as described on this datasheet, we will offer a refund or replacement. For full details of the Abpromise, please visit <https://www.abcam.co.jp/abpromise> or contact our technical team.

Terms and conditions

- Guarantee only valid for products bought direct from Abcam or one of our authorized distributors