

Anti-S1P antibody ab59870

★★★★★ [5 Abreviews](#) [1 References](#) [画像数 1](#)

製品の概要

製品名	Anti-S1P antibody
製品の詳細	Rabbit polyclonal to S1P
由来種	Rabbit
特異性	We have a range of domain specific antibodies for this target. For a full list please see all MBTPS1 antibodies . ab59870 recognizes all four forms of MBTPS1 (1052, 746, 607 and 552 amino acids in length).
アプリケーション	適用あり: WB
種交差性	交差種: Human
免疫原	Synthetic peptide based on the catalytic domain of human MBTPS1. Immunizing peptide available on request - please contact a member of staff to ask for availability.
特記事項	<p>The Life Science industry has been in the grips of a reproducibility crisis for a number of years. Abcam is leading the way in addressing this with our range of recombinant monoclonal antibodies and knockout edited cell lines for gold-standard validation. Please check that this product meets your needs before purchasing.</p> <p>If you have any questions, special requirements or concerns, please send us an inquiry and/or contact our Support team ahead of purchase. Recommended alternatives for this product can be found below, along with publications, customer reviews and Q&As</p>

製品の特性

製品の状態	Liquid
保存方法	Shipped at 4°C. Store at -20°C. Stable for 12 months at -20°C.
バッファー	<p>pH: 7.40</p> <p>Preservative: 0.05% Sodium azide</p> <p>Constituents: PBS, 50% Glycerol, 2.9% Sodium chloride</p>
精製度	Immunogen affinity purified
ポリ/モノ	ポリクローナル
アイソタイプ	IgG

アプリケーション

The Abpromise guarantee

Abpromise保証は、次のテスト済みアプリケーションにおけるab59870の使用に適用されます

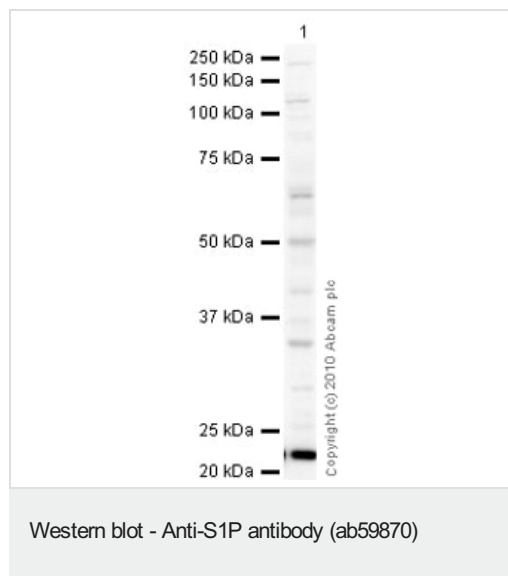
アプリケーションノートには、推奨の開始希釈率がありますが、適切な希釈率につきましてはご検討ください。

アプリケーション	Abreviews	特記事項
WB	★★★★★ (2)	1/1000 - 1/5000. Predicted molecular weight: 118 kDa. 1/1,000 when using colorimetric substrates such as BCIP/NBT, and 1/5,000 for chemiluminescent substrates.

ターゲット情報

関連性	S1P (also known as MBTPS1,SKI1), was first discovered as one of two enzymes that cleave the sterol regulatory binding proteins (SREBPs), in the case of S1P at “site-1,” a hydrophilic loop extending into the lumen of the ER. The MBTPS1 domain structure contains a signal sequence followed by a propeptide domain, a catalytic domain, a transmembrane domain and a cytoplasmic domain.
細胞内局在	Endoplasmic reticulum membrane; Single-pass type I membrane protein. Golgi apparatus membrane; Single-pass type I membrane protein.

画像



Anti-S1P antibody (ab59870) at 1 µg/ml + HepG2 (Human hepatocellular liver carcinoma cell line) Whole Cell Lysate at 10 µg

Secondary

Goat Anti-Rabbit IgG H&L (HRP) preadsorbed ([ab97080](#)) at 1/5000 dilution

Developed using the ECL technique.

Performed under reducing conditions.

Predicted band size: 118 kDa

Exposure time: 16 minutes

The 148 kDa zymogen is processed progressively into two membrane-bound 120 and 106 kDa forms in the endoplasmic reticulum, and late into a secreted 98 kDa form. The propeptide is autocatalytically removed through an intramolecular cleavage after Leu-186. Further cleavage generates 14, 10, and 8 kDa intermediates.

Please note: All products are "FOR RESEARCH USE ONLY. NOT FOR USE IN DIAGNOSTIC PROCEDURES"

Our Abpromise to you: Quality guaranteed and expert technical support

- Replacement or refund for products not performing as stated on the datasheet
- Valid for 12 months from date of delivery
- Response to your inquiry within 24 hours

- We provide support in Chinese, English, French, German, Japanese and Spanish
- Extensive multi-media technical resources to help you
- We investigate all quality concerns to ensure our products perform to the highest standards

If the product does not perform as described on this datasheet, we will offer a refund or replacement. For full details of the Abpromise, please visit <https://www.abcam.co.jp/abpromise> or contact our technical team.

Terms and conditions

- Guarantee only valid for products bought direct from Abcam or one of our authorized distributors