

### Anti-S100A12/CGRP antibody ab37657

★★★★★ [1 Abreviews](#) [11 References](#) [画像数 2](#)

#### 製品の概要

製品名	Anti-S100A12/CGRP antibody
製品の詳細	Rabbit polyclonal to S100A12/CGRP
由来種	Rabbit
アプリケーション	<b>適用あり:</b> IHC-Fr, WB
種交差性	<b>交差種:</b> Human, Recombinant fragment
免疫原	Fusion protein corresponding to Human S100A12/CGRP.
特記事項	<p>The Life Science industry has been in the grips of a reproducibility crisis for a number of years. Abcam is leading the way in addressing this with our range of recombinant monoclonal antibodies and knockout edited cell lines for gold-standard validation. Please check that this product meets your needs before purchasing.</p> <p>If you have any questions, special requirements or concerns, please send us an inquiry and/or contact our Support team ahead of purchase. Recommended alternatives for this product can be found below, along with publications, customer reviews and Q&amp;As</p>

#### 製品の特性

製品の状態	Liquid
保存方法	Shipped at 4°C. Store at +4°C short term (1-2 weeks). Upon delivery aliquot. Store at -20°C or -80°C. Avoid freeze / thaw cycle.
バッファー	Preservative: 0.1% Sodium azide Constituents: 50% Glycerol, PBS
精製度	Immunogen affinity purified
ポリ/モノ	ポリクローナル
アイソタイプ	IgG

#### アプリケーション

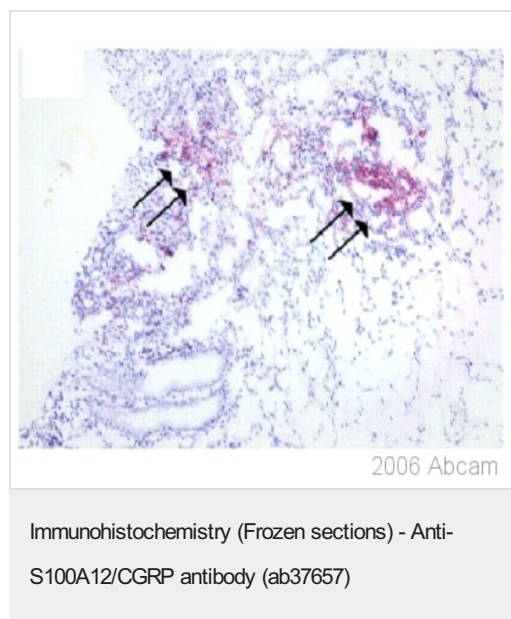
**The Abpromise guarantee**      **Abpromise保証は、次のテスト済みアプリケーションにおけるab37657の使用に適用されます**  
 アプリケーションノートには、推奨の開始希釈率がありますが、適切な希釈率につきましてはご検討ください。

アプリケーション	Abreviews	特記事項
IHC-Fr		1/2000.
WB		1/1000 - 1/10000. Detects a band of approximately 10.5 kDa (predicted molecular weight: 10.5 kDa).

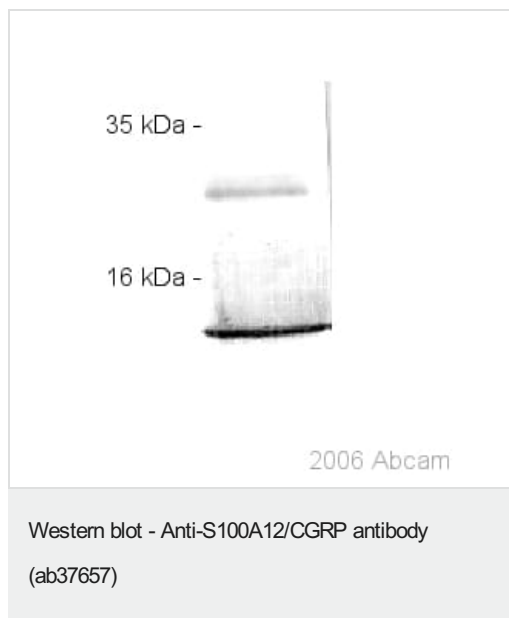
## ターゲット情報

機能	Calcitermin possesses antifungal activity against <i>C.albicans</i> and is also active against <i>E.coli</i> and <i>P.aeruginosa</i> but not <i>L.monocytogenes</i> and <i>S.aureus</i> . Binds calcium, zinc and copper. Presence of zinc increases the affinity for calcium. Plays an important role in the inflammatory response. Interaction with AGER on endothelium, mononuclear phagocytes, and lymphocytes triggers cellular activation, with generation of key proinflammatory mediators.
組織特異性	Monocytes and lymphocytes.
配列類似性	Belongs to the S-101 family. Contains 2 EF-hand domains.

## 画像



Anti-S100A12/CGRP antibody (ab37657) detects macrophage infiltrates expressing S100A12/CGRP in colon tissues from a patient with Crohn's disease.



Anti-S100A12/CGRP antibody (ab37657) + 200 ng recombinant human S100A12/CGRP

**Secondary**

anti-rabbit IgG alkaline phosphatase conjugate

**Predicted band size:** 10.5 kDa

**Observed band size:** 10.5 kDa

**Additional bands at:** 21 kDa (possible dimer)

**Please note:** All products are "FOR RESEARCH USE ONLY. NOT FOR USE IN DIAGNOSTIC PROCEDURES"

### Our Abpromise to you: Quality guaranteed and expert technical support

---

- Replacement or refund for products not performing as stated on the datasheet
- Valid for 12 months from date of delivery
- Response to your inquiry within 24 hours
- We provide support in Chinese, English, French, German, Japanese and Spanish
- Extensive multi-media technical resources to help you
- We investigate all quality concerns to ensure our products perform to the highest standards

If the product does not perform as described on this datasheet, we will offer a refund or replacement. For full details of the Abpromise, please visit <https://www.abcam.co.jp/abpromise> or contact our technical team.

### Terms and conditions

---

- Guarantee only valid for products bought direct from Abcam or one of our authorized distributors