


Anti-S100 beta antibody ab41548

★★★★☆ [17 Abreviews](#) [98 References](#) [画像数 3](#)

製品の概要

製品名	Anti-S100 beta antibody
製品の詳細	Rabbit polyclonal to S100 beta
由来種	Rabbit
特異性	From Jan 2024, QC testing of replenishment batches of this polyclonal changed. All tested and expected application and reactive species combinations are still covered by our Abcam product promise. However, we no longer test all applications. For more information on a specific batch, please contact our Scientific Support who will be happy to help. You may also be interested in our alternative recombinant antibody, ab52642 .
アプリケーション	適用あり: IHC-P, WB 適用なし: ICC/IF
種交差性	交差種: Mouse, Rat, Zebrafish 交差が予測される動物種: Rabbit, Cow, Human, Pig, Chinese hamster 
免疫原	Synthetic peptide corresponding to Rat S100 beta aa 50 to the C-terminus (C terminal) conjugated to keyhole limpet haemocyanin. (Peptide available as ab41547)
特記事項	<p>The Life Science industry has been in the grips of a reproducibility crisis for a number of years. Abcam is leading the way in addressing this with our range of recombinant monoclonal antibodies and knockout edited cell lines for gold-standard validation. Please check that this product meets your needs before purchasing.</p> <p>If you have any questions, special requirements or concerns, please send us an inquiry and/or contact our Support team ahead of purchase. Recommended alternatives for this product can be found below, along with publications, customer reviews and Q&As</p>

製品の特性

製品の状態	Liquid
保存方法	Shipped at 4°C. Store at +4°C short term (1-2 weeks). Upon delivery aliquot. Store at -20°C or -80°C. Avoid freeze / thaw cycle.
バッファー	pH: 7.40 Preservative: 0.02% Sodium azide Constituent: PBS

Batches of this product that have a concentration < 1mg/ml may have BSA added as a stabilising agent. If you would like information about the formulation of a specific lot, please contact our scientific support team who will be happy to help.

精製度 Immunogen affinity purified
ポリ/モノ ポリクローナル
アイソタイプ IgG

アプリケーション

The Abpromise guarantee Abpromise保証は、次のテスト済みアプリケーションにおけるab41548の使用に適用されます
アプリケーションノートには、推奨の開始希釈率がありますが、適切な希釈率につきましてはご検討ください。

アプリケーション	Abreviews	特記事項
IHC-P	★★★★★ (10)	Use at an assay dependent concentration.
WB	★★★★★ (1)	Use a concentration of 1 µg/ml. Detects a band of approximately 9 kDa (predicted molecular weight: 11 kDa).

追加情報 Is unsuitable for ICC/IF.

ターゲット情報

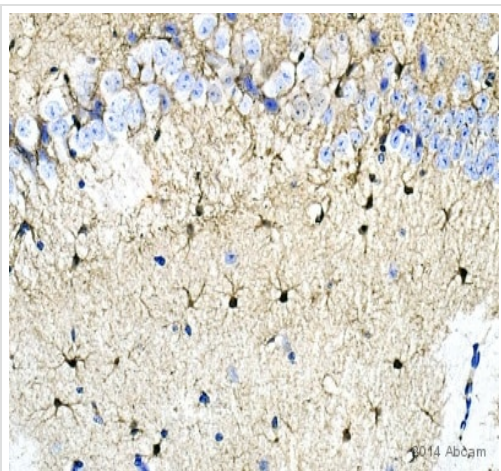
機能 Weakly binds calcium but binds zinc very tightly-distinct binding sites with different affinities exist for both ions on each monomer. Physiological concentrations of potassium ion antagonize the binding of both divalent cations, especially affecting high-affinity calcium-binding sites. Binds to and initiates the activation of STK38 by releasing autoinhibitory intramolecular interactions within the kinase. Interaction with AGER after myocardial infarction may play a role in myocyte apoptosis by activating ERK1/2 and p53/TP53 signaling.

組織特異性 Although predominant among the water-soluble brain proteins, S100 is also found in a variety of other tissues.

配列類似性 Belongs to the S-101 family.
Contains 2 EF-hand domains.

細胞内局在 Cytoplasm. Nucleus.

画像

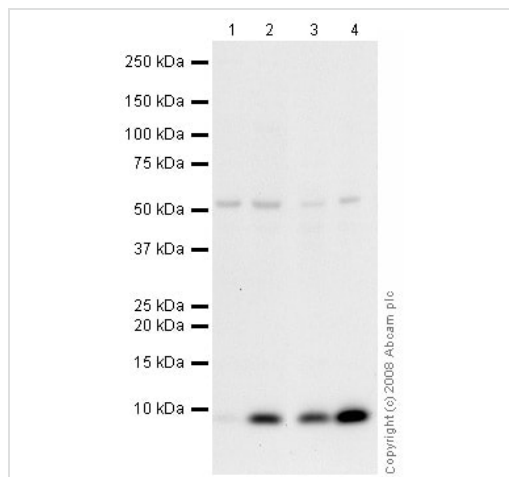


Immunohistochemistry (Formalin/PFA-fixed paraffin-embedded sections) - Anti-S100 beta antibody - Astrocyte Marker (ab41548)

This image is courtesy of an Abreview submitted by Carl Hobbs

ab41548 staining S100 beta in mouse brain tissue sections by Immunohistochemistry (IHC-P - paraformaldehyde-fixed, paraffin-embedded sections). Tissue was fixed with formaldehyde and blocked with 1% BSA for 10 minutes; antigen retrieval was by heat mediation in citric acid. Samples were incubated with primary antibody (1/10000 in TBS/BSA/azide) for 2 hours at 21°C. A Biotin-conjugated goat anti-rabbit IgG polyclonal (1/250) was used as the secondary antibody.

At this dilution factor, there is very good delineation of astrocyte processes.



Western blot - Anti-S100 beta antibody - Astrocyte Marker (ab41548)

All lanes : Anti-S100 beta antibody (ab41548) at 1 µg/ml

Lane 1 : Brain (Mouse) Tissue Lysate

Lane 2 : Brain (Rat) Tissue Lysate

Lane 3 : Spinal Cord (Mouse) Tissue Lysate

Lane 4 : Spinal Cord (Rat) Tissue Lysate

Lysates/proteins at 10 µg per lane.

Secondary

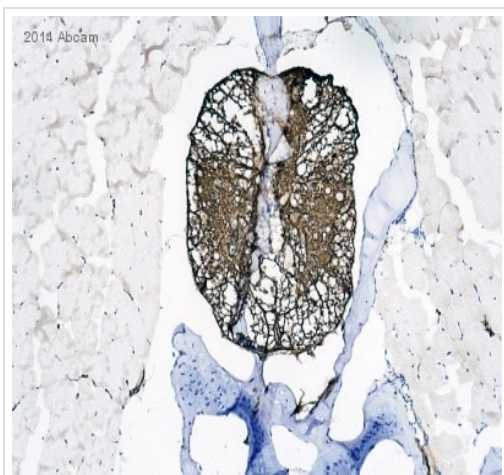
All lanes : Goat polyclonal to Rabbit IgG - H&L - Pre-Adsorbed (HRP) at 1/3000 dilution

Performed under reducing conditions.

Predicted band size: 11 kDa

Observed band size: 9 kDa

Additional bands at: 52 kDa. We are unsure as to the identity of these extra bands.



Immunohistochemistry (Formalin/PFA-fixed paraffin-embedded sections) - Anti-S100 beta antibody - Astrocyte Marker (ab41548)

Image courtesy of Carl Hobbs, King College London, U.K.

ab41548 staining S100 beta in Zebrafish body, showing T/S of spinal cord region by Immunohistochemistry (IHC-P - paraformaldehyde-fixed, paraffin-embedded sections). Tissue was fixed with formaldehyde and blocked with 1% BSA for 10 minutes; antigen retrieval was by heat mediation in citric acid. Samples were incubated with primary antibody (1/10000 in TBS/BSA/azide) for 2 hours at 21°C. A Biotin-conjugated goat anti-rabbit IgG polyclonal (1/250) was used as the secondary antibody.

Please note: All products are "FOR RESEARCH USE ONLY. NOT FOR USE IN DIAGNOSTIC PROCEDURES"

Our Abpromise to you: Quality guaranteed and expert technical support

- Replacement or refund for products not performing as stated on the datasheet
- Valid for 12 months from date of delivery
- Response to your inquiry within 24 hours
- We provide support in Chinese, English, French, German, Japanese and Spanish
- Extensive multi-media technical resources to help you
- We investigate all quality concerns to ensure our products perform to the highest standards

If the product does not perform as described on this datasheet, we will offer a refund or replacement. For full details of the Abpromise, please visit <https://www.abcam.co.jp/abpromise> or contact our technical team.

Terms and conditions

- Guarantee only valid for products bought direct from Abcam or one of our authorized distributors