


# Anti-RWDD1 antibody [EPR13715(B)] ab181994

リコンビナント RabMAb

画像数 4

### 製品の概要

製品名	Anti-RWDD1 antibody [EPR13715(B)]
製品の詳細	Rabbit monoclonal [EPR13715(B)] to RWDD1
由来種	Rabbit
アプリケーション	<b>適用あり:</b> Flow Cyt (Intra), WB, IP
種交差性	<b>交差種:</b> Human <b>交差が予測される動物種:</b> Mouse, Rat 
免疫原	Synthetic peptide. This information is proprietary to Abcam and/or its suppliers.
ポジティブ・コントロール	HeLa cells; Jurkat, HeLa, 293, A673 cell lysate
特記事項	This product is a recombinant monoclonal antibody, which offers several advantages including: <ul style="list-style-type: none"><li>- High batch-to-batch consistency and reproducibility</li><li>- Improved sensitivity and specificity</li><li>- Long-term security of supply</li><li>- Animal-free production</li></ul> For more information <a href="#">see here</a> . Our RabMAb <sup>®</sup> technology is a patented hybridoma-based technology for making rabbit monoclonal antibodies. For details on our patents, please refer to <a href="#">RabMAb<sup>®</sup> patents</a> .

### 製品の特性

製品の状態	Liquid
保存方法	Shipped at 4°C. Store at +4°C short term (1-2 weeks). Upon delivery aliquot. Store at -20°C long term. Avoid freeze / thaw cycle.
バッファー	Preservative: 0.01% Sodium azide Constituents: 59% PBS, 40% Glycerol (glycerin, glycerine), 0.05% BSA
精製度	Tissue culture supernatant
ポリ/モノ	モノクローナル
クローン名	EPR13715(B)
アイソタイプ	IgG

## アプリケーション

**The Abpromise guarantee** Abpromise保証は、次のテスト済みアプリケーションにおけるab181994の使用に適用されます  
アプリケーションノートには、推奨の開始希釈率がありますが、適切な希釈率につきましてはご検討ください。

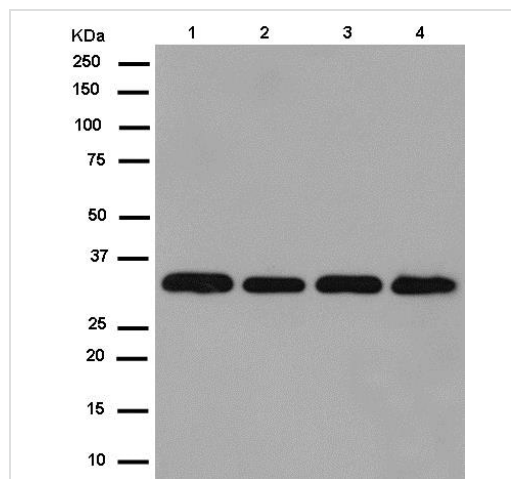
アプリケーション	Abreviews	特記事項
Flow Cyt (Intra)		1/10. <b>ab172730</b> - Rabbit monoclonal IgG, is suitable for use as an isotype control with this antibody.
WB		1/10000 - 1/50000. Detects a band of approximately 30 kDa (predicted molecular weight: 28 kDa).
IP		1/60.

## ターゲット情報

**機能** Protects DRG2 from proteolytic degradation.

**配列類似性** Belongs to the RWDD1/GIR2 family.  
Contains 1 RWD domain.

## 画像



Western blot - Anti-RWDD1 antibody [EPR13715(B)] (ab181994)

**All lanes** : Anti-RWDD1 antibody [EPR13715(B)] (ab181994) at 1/50000 dilution

**Lane 1** : Jurkat cell lysate

**Lane 2** : HeLa cell lysate

**Lane 3** : 293 cell lysate

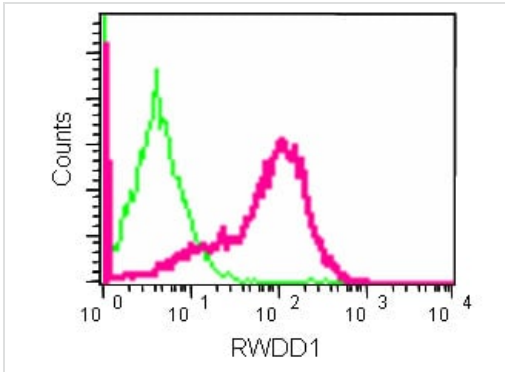
**Lane 4** : A673 cell lysate

Lysates/proteins at 20 µg per lane.

### Secondary

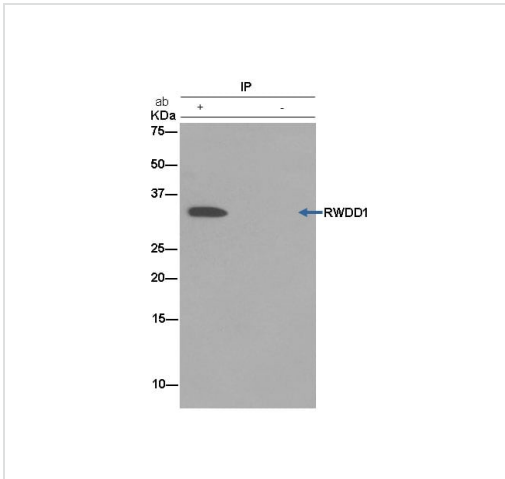
**All lanes** : Goat Anti-Rabbit IgG, (H+L), Peroxidase conjugated at 1/1000 dilution

**Predicted band size:** 28 kDa



Flow Cytometry (Intracellular) - Anti-RWDD1 antibody [EPR13715(B)] (ab181994)





Intracellular flow cytometric analysis of 2% paraformaldehyde-fixed Helacells labeling RWDD1 with ab181994 at a 1/10 dilution, or with rabbit IgG isotype control. Goat anti rabbit IgG (FITC) at a 1/150 dilution was used as a secondary antibody.



Immunoprecipitation - Anti-RWDD1 antibody [EPR13715(B)] (ab181994)

Immunoprecipitation of Jurkat labeling RWDD1 using ab181994 at a 1/60 dilution (lane 1). Lane 2 shows the negative control. Anti-Rabbit IgG (HRP), specific to the non-reduced form of IgG, was used as a secondary antibody at a dilution of 1/1500. Blocking/dilution buffer and concentration: 5% NFDm/TBST

Why choose a recombinant antibody?

 <p><b>Research with confidence</b> Consistent and reproducible results</p>	 <p><b>Long-term and scalable supply</b> Recombinant technology</p>
 <p><b>Success from the first experiment</b> Confirmed specificity</p>	 <p><b>Ethical standards compliant</b> Animal-free production</p>

Anti-RWDD1 antibody [EPR13715(B)] (ab181994)

**Please note:** All products are "FOR RESEARCH USE ONLY. NOT FOR USE IN DIAGNOSTIC PROCEDURES"

### **Our Abpromise to you: Quality guaranteed and expert technical support**

---

- Replacement or refund for products not performing as stated on the datasheet
- Valid for 12 months from date of delivery
- Response to your inquiry within 24 hours
  
- We provide support in Chinese, English, French, German, Japanese and Spanish
- Extensive multi-media technical resources to help you
- We investigate all quality concerns to ensure our products perform to the highest standards

If the product does not perform as described on this datasheet, we will offer a refund or replacement. For full details of the Abpromise, please visit <https://www.abcam.co.jp/abpromise> or contact our technical team.

### **Terms and conditions**

---

- Guarantee only valid for products bought direct from Abcam or one of our authorized distributors