

Anti-RUNX1T1/ETO/CDR antibody ab124269

3 References [画像数 2](#)

製品の概要

製品名	Anti-RUNX1T1/ETO/CDR antibody
製品の詳細	Rabbit polyclonal to RUNX1T1/ETO/CDR
由来種	Rabbit
アプリケーション	適用あり: WB, IP
種交差性	交差種: Human 交差が予測される動物種: Mouse, Rat, Rabbit, Horse, Guinea pig, Cow, Dog, Pig, Chimpanzee, Rhesus monkey, Gorilla, Orangutan 
免疫原	Synthetic peptide corresponding to Human RUNX1T1/ETO/CDR aa 554-604. Database link: NP_001185555.1
ポジティブ・コントロール	293T whole cell lysate
特記事項	<p>The Life Science industry has been in the grips of a reproducibility crisis for a number of years. Abcam is leading the way in addressing this with our range of recombinant monoclonal antibodies and knockout edited cell lines for gold-standard validation. Please check that this product meets your needs before purchasing.</p> <p>If you have any questions, special requirements or concerns, please send us an inquiry and/or contact our Support team ahead of purchase. Recommended alternatives for this product can be found below, along with publications, customer reviews and Q&As</p>

製品の特性

製品の状態	Liquid
保存方法	Shipped at 4°C. Upon delivery aliquot and store at -20°C. Avoid freeze / thaw cycles.
バッファー	pH: 7 Preservative: 0.09% Sodium azide Constituent: 99% Tris citrate/phosphate
精製度	pH 7 to 8 Immunogen affinity purified
特記事項 (精製)	ab124269 was affinity purified using an epitope specific to RUNX1T1/ETO/CDR immobilized on solid support.
ポリ/モノ	ポリクローナル

アプリケーション

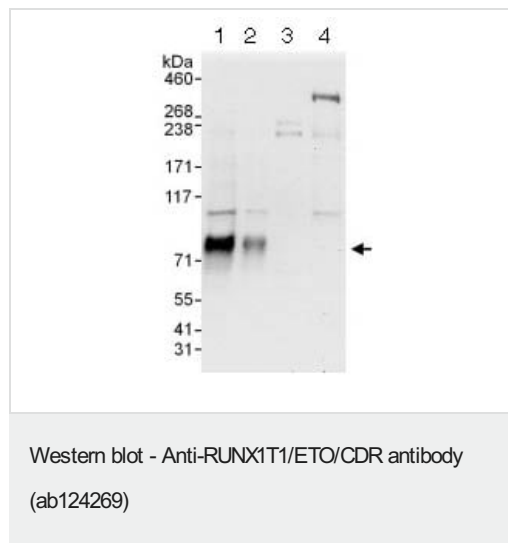
The Abpromise guarantee Abpromise保証は、次のテスト済みアプリケーションにおけるab124269の使用に適用されます
 アプリケーションノートには、推奨の開始希釈率がありますが、適切な希釈率につきましてはご検討ください。

アプリケーション	Abreviews	特記事項
WB		1/500 - 1/2000.
IP		Use at 2-10 µg/mg of lysate.

ターゲット情報

機能	Transcription regulator that exerts its function by binding to histone deacetylases and transcription factors. Can repress transactivation mediated by TCF12.
組織特異性	Most abundantly expressed in brain. Lower levels in lung, heart, testis and ovary.
関連疾患	Note=A chromosomal aberration involving RUNX1T1 is a cause of acute myeloid leukemia (AML-M2). Translocation t(8;21)(q22;q22) with RUNX1/AML1. Defects in RUNX1T1 may be a cause of colorectal cancer (CRC) [MIM:114500].
配列類似性	Belongs to the CBFA2T family. Contains 1 MYND-type zinc finger. Contains 1 TAFH (NHR1) domain.
ドメイン	The TAFH domain mediates interaction with transcription regulators.
細胞内局在	Nucleus.

画像



All lanes : Anti-RUNX1T1/ETO/CDR antibody (ab124269) at 0.4 µg/ml

Lane 1 : 293T whole cell lysate at 50 µg

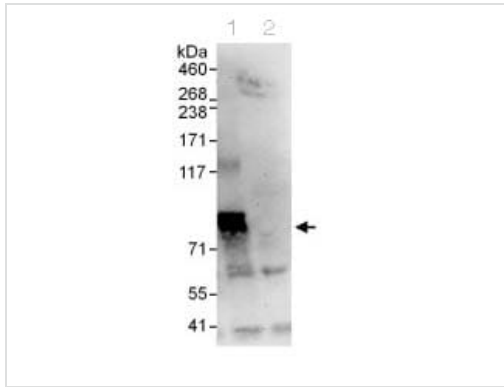
Lane 2 : 293T whole cell lysate at 15 µg

Lane 3 : Jurkat whole cell lysate at 50 µg

Lane 4 : HeLa whole cell lysate at 50 µg

Developed using the ECL technique.

Exposure time: 30 seconds



Immunoprecipitation - Anti-RUNX1T1/ETO/CDR antibody (ab124269)

ab124269 at 1 μ g/ml staining RUNX1T1/ETO/CDR in 293T whole cell lysate immunoprecipitated using ab124269 at 6 μ g/mg lysate (1 mg/IP; 20% of IP loaded/lane). Lane 2: control IgG. Predicted band size : 68 kDa. Exposure time: 30 seconds

Please note: All products are "FOR RESEARCH USE ONLY. NOT FOR USE IN DIAGNOSTIC PROCEDURES"

Our Abpromise to you: Quality guaranteed and expert technical support

- Replacement or refund for products not performing as stated on the datasheet
- Valid for 12 months from date of delivery
- Response to your inquiry within 24 hours
- We provide support in Chinese, English, French, German, Japanese and Spanish
- Extensive multi-media technical resources to help you
- We investigate all quality concerns to ensure our products perform to the highest standards

If the product does not perform as described on this datasheet, we will offer a refund or replacement. For full details of the Abpromise, please visit <https://www.abcam.co.jp/abpromise> or contact our technical team.

Terms and conditions

- Guarantee only valid for products bought direct from Abcam or one of our authorized distributors