

Anti-RTN3/HAP antibody ab68328

KO 評価済

★★★★☆ [1 Abreviews](#) [3 References](#) [画像数 2](#)

製品の概要

製品名	Anti-RTN3/HAP antibody
製品の詳細	Mouse polyclonal to RTN3/HAP
由来種	Mouse
アプリケーション	適用あり: WB
種交差性	交差種: Human
免疫原	Synthetic peptide corresponding to Human RTN3/HAP aa 1-236. Database link: NP_006045.1
ポジティブ・コントロール	WB: Wild-type HEK-293T, HeLa, U-87 MG, and RTN3/HAP transfected 293T cell lysates.
特記事項	<p>The Life Science industry has been in the grips of a reproducibility crisis for a number of years. Abcam is leading the way in addressing this with our range of recombinant monoclonal antibodies and knockout edited cell lines for gold-standard validation. Please check that this product meets your needs before purchasing.</p> <p>If you have any questions, special requirements or concerns, please send us an inquiry and/or contact our Support team ahead of purchase. Recommended alternatives for this product can be found below, along with publications, customer reviews and Q&As</p>

製品の特性

製品の状態	Liquid
保存方法	Shipped at 4°C. Upon delivery aliquot and store at -20°C or -80°C. Avoid repeated freeze / thaw cycles.
バッファー	pH: 7.40 Constituent: 100% PBS
精製度	Protein A purified
ポリ/モノ	ポリクローナル
アイソタイプ	IgG

アプリケーション

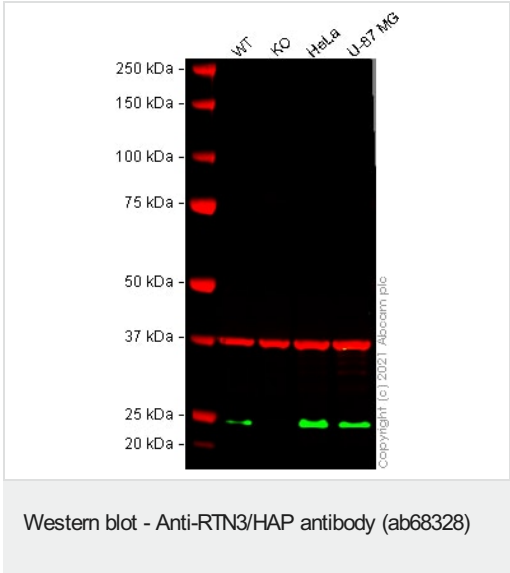
The Abpromise guarantee **Abpromise保証は、次のテスト済みアプリケーションにおけるab68328の使用に適用されます**
アプリケーションノートには、推奨の開始希釈率がありますが、適切な希釈率につきましてはご検討ください。

アプリケーション	Abreviews	特記事項
WB		1/500 - 1/1000. Detects a band of approximately 22 kDa (predicted molecular weight: 26 kDa).

ターゲット情報

機能	May be involved in membrane trafficking in the early secretory pathway. Inhibits BACE1 activity and amyloid precursor protein processing. May induce caspase-8 cascade and apoptosis. May favor BCL2 translocation to the mitochondria upon endoplasmic reticulum stress. In case of enteroviruses infection, RTN3 may be involved in the viral replication or pathogenesis.
組織特異性	Isoform 3 is widely expressed, with highest levels in brain, where it is enriched in neuronal cell bodies from gray matter (at protein level). Three times more abundant in macula than in peripheral retina. Isoform 1 is expressed at high levels in brain and at low levels in skeletal muscle. Isoform 2 is only found in melanoma.
配列類似性	Contains 1 reticulon domain.
細胞内局在	Endoplasmic reticulum membrane. Golgi apparatus membrane.

画像



All lanes : Anti-RTN3/HAP antibody (ab68328) at 1/500 dilution

- Lane 1 :** Wild-type HEK-293T cell lysate
- Lane 2 :** RTN3 knockout HEK-293T cell lysate
- Lane 3 :** HeLa cell lysate
- Lane 4 :** U-87 MG cell lysate

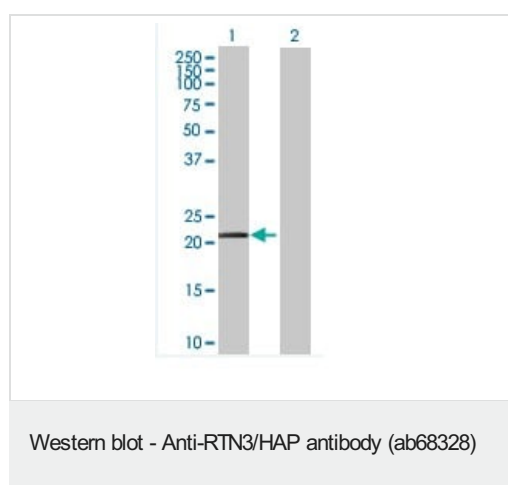
Lysates/proteins at 20 µg per lane.

Performed under reducing conditions.

Predicted band size: 26 kDa
Observed band size: 24 kDa

False colour image of Western blot: Anti-RTN3/HAP antibody staining at 1/500 dilution, shown in green; Rabbit Anti-GAPDH antibody [EPR16891] (**ab181602**) loading control staining at 1/20000 dilution, shown in red. In Western blot, ab68328 was shown to bind specifically to RTN3/HAP. A band was observed at

24 kDa in wild-type HEK-293T cell lysates with no signal observed at this size in RTN3 knockout cell line [ab266517](#) (knockout cell lysate [ab258647](#)). To generate this image, wild-type and RTN3 knockout HEK-293T cell lysates were analysed. First, samples were run on an SDS-PAGE gel then transferred onto a nitrocellulose membrane. Membranes were blocked in 3 % milk in TBS-0.1 % Tween® 20 (TBS-T) before incubation with primary antibodies overnight at 4°C. Blots were washed four times in TBS-T, incubated with secondary antibodies for 1 h at room temperature, washed again four times then imaged. Secondary antibodies used were Goat anti-Mouse IgG H&L (IRDye® 800CW) preabsorbed ([ab216772](#)) and Goat anti-Rabbit IgG H&L (IRDye® 680RD) preabsorbed ([ab216777](#)) at 1/20000 dilution.



All lanes : Anti-RTN3/HAP antibody (ab68328) at 1/500 dilution

Lane 1 : RTN3/HAP transfected 293T cell lysate

Lane 2 : non transfected 293T cell lysate

Lysates/proteins at 25 µg per lane.

Secondary

All lanes : Goat Anti-Mouse IgG (H&L)-HRP Conjugate at 1/2500 dilution

Predicted band size: 26 kDa

Observed band size: 22 kDa

Please note: All products are "FOR RESEARCH USE ONLY. NOT FOR USE IN DIAGNOSTIC PROCEDURES"

Our Abpromise to you: Quality guaranteed and expert technical support

- Replacement or refund for products not performing as stated on the datasheet
- Valid for 12 months from date of delivery
- Response to your inquiry within 24 hours
- We provide support in Chinese, English, French, German, Japanese and Spanish
- Extensive multi-media technical resources to help you
- We investigate all quality concerns to ensure our products perform to the highest standards

If the product does not perform as described on this datasheet, we will offer a refund or replacement. For full details of the Abpromise, please visit <https://www.abcam.co.jp/abpromise> or contact our technical team.

Terms and conditions

- Guarantee only valid for products bought direct from Abcam or one of our authorized distributors