


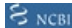


Anti-RSPH4A antibody ab122157

画像数 3

製品の概要

製品名	Anti-RSPH4A antibody
製品の詳細	Rabbit polyclonal to RSPH4A
由来種	Rabbit
アプリケーション	適用あり: WB, IHC-P, ICC/IF
種交差性	交差種: Human
免疫原	antigen sequence, corresponding to amino acids 22-94 (RPWEGKTAAS PQYSEPESSSE PLEAKQGPET GRQSRSSRPW SPQSRRAKTPL GGPAGPETSS PAPVSPREPS SSP) of Human RSPH4A. <div>  Run BLAST with   Run BLAST with  </div>
ポジティブ・コントロール	Human bronchus tissue; RT-4 and U-251 MG cell lysates; Human liver and tonsil lysates; A-431 cells
特記事項	<p>The Life Science industry has been in the grips of a reproducibility crisis for a number of years. Abcam is leading the way in addressing this with our range of recombinant monoclonal antibodies and knockout edited cell lines for gold-standard validation. Please check that this product meets your needs before purchasing.</p> <p>If you have any questions, special requirements or concerns, please send us an inquiry and/or contact our Support team ahead of purchase. Recommended alternatives for this product can be found below, along with publications, customer reviews and Q&As</p>

製品の特性

製品の状態	Liquid
保存方法	Shipped at 4°C. Upon delivery aliquot and store at -20°C. Avoid freeze / thaw cycles.
バッファー	pH: 7.20 Preservative: 0.02% Sodium azide Constituents: 59% PBS, 40% Glycerol (glycerin, glycerine)
精製度	Immunogen affinity purified
ポリ/モノ	ポリクローナル
アイソタイプ	IgG

アプリケーション

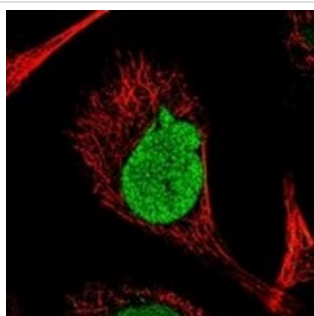
The Abpromise guarantee Abpromise保証は、次のテスト済みアプリケーションにおけるab122157の使用に適用されます
アプリケーションノートには、推奨の開始希釈率がありますが、適切な希釈率につきましてはご確認ください。

アプリケーション	Abreviews	特記事項
WB		1/250 - 1/500.
IHC-P		1/50 - 1/200. Perform heat mediated antigen retrieval with citrate buffer pH 6 before commencing with IHC staining protocol.
ICC/IF		Use a concentration of 0.25 - 2 µg/ml.

ターゲット情報

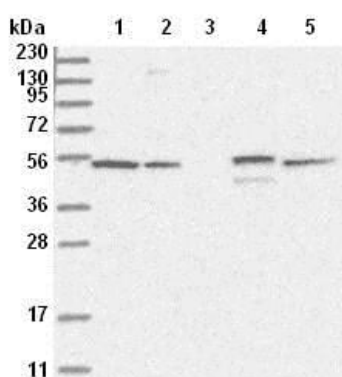
機能	Probable component of the axonemal radial spoke head. Radial spokes are regularly spaced along cilia, sperm and flagella axonemes. They consist of a thin stalk which is attached to a subfiber of the outer doublet microtubule, and a bulbous head which is attached to the stalk and appears to interact with the projections from the central pair of microtubules.
関連疾患	Defects in RSPH4A are the cause of primary ciliary dyskinesia type 11 (CILD11) [MIM:612649]. CILD is an autosomal recessive disorder characterized by axonemal abnormalities of motile cilia. Respiratory infections leading to chronic inflammation and bronchiectasis are recurrent, due to defects in the respiratory cilia; reduced fertility is often observed in male patients due to abnormalities of sperm tails. Half of the patients exhibit situs inversus, due to dysfunction of monocilia at the embryonic node and randomization of left-right body asymmetry. Primary ciliary dyskinesia associated with situs inversus is referred to as Kartagener syndrome.
配列類似性	Belongs to the flagellar radial spoke RSP4/6 family.
細胞内局在	Cytoplasm > cytoskeleton > cilium axoneme. Radial spoke.

画像



ab122157, at 4 µg/ml, staining RSPH4A (green) in PFA-fixed, Triton-permeabilized Human A-431 cells by Immunofluorescence.

Immunocytochemistry/ Immunofluorescence - Anti-RSPH4A antibody (ab122157)



Western blot - Anti-RSPH4A antibody (ab122157)

All lanes : Anti-RSPH4A antibody (ab122157) at 1/250 dilution

Lane 1 : RT-4 cell lysate

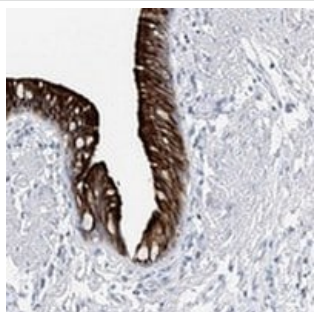
Lane 2 : U-251 MG cell lysate

Lane 3 : Human plasma

Lane 4 : Human liver lysate

Lane 5 : Human tonsil lysate

Developed using the ECL technique.



Immunohistochemistry (Formalin/PFA-fixed paraffin-embedded sections) - Anti-RSPH4A antibody (ab122157)

ab122157, at 1/75, staining RSPH4A in paraffin embedded Human bronchus tissue by Immunohistochemistry.

Please note: All products are "FOR RESEARCH USE ONLY. NOT FOR USE IN DIAGNOSTIC PROCEDURES"

Our Abpromise to you: Quality guaranteed and expert technical support

- Replacement or refund for products not performing as stated on the datasheet
- Valid for 12 months from date of delivery
- Response to your inquiry within 24 hours
- We provide support in Chinese, English, French, German, Japanese and Spanish
- Extensive multi-media technical resources to help you
- We investigate all quality concerns to ensure our products perform to the highest standards

If the product does not perform as described on this datasheet, we will offer a refund or replacement. For full details of the Abpromise, please visit <https://www.abcam.co.jp/abpromise> or contact our technical team.

Terms and conditions

- Guarantee only valid for products bought direct from Abcam or one of our authorized distributors