

Anti-RSK1 p90 (phospho S732) antibody ab106087

画像数 1

製品の概要

製品名	Anti-RSK1 p90 (phospho S732) antibody
製品の詳細	Rabbit polyclonal to RSK1 p90 (phospho S732)
由来種	Rabbit
アプリケーション	適用あり: WB
種交差性	交差種: Human 交差が予測される動物種: Mouse, Rat, Horse, Chicken, Cow, Dog, Opossum 
免疫原	Synthetic peptide corresponding to Human RSK1 p90 (C terminal).
ポジティブ・コントロール	EGF stimulated HEK293T cell lysates.
特記事項	Expiration date is one (1) year from date of opening product. Dilute only prior to immediate use. The Life Science industry has been in the grips of a reproducibility crisis for a number of years. Abcam is leading the way in addressing this with our range of recombinant monoclonal antibodies and knockout edited cell lines for gold-standard validation. Please check that this product meets your needs before purchasing. If you have any questions, special requirements or concerns, please send us an inquiry and/or contact our Support team ahead of purchase. Recommended alternatives for this product can be found below, along with publications, customer reviews and Q&As

製品の特性

製品の状態	Liquid
保存方法	Shipped at 4°C. Store at +4°C short term (1-2 weeks). Upon delivery aliquot. Store at -20°C or -80°C. Avoid freeze / thaw cycle.
バッファー	Preservative: 0.01% Sodium azide Constituents: 0.42% Potassium phosphate, 0.88% Sodium chloride
精製度	Immunogen affinity purified
特記事項(精製)	ab106087 was affinity purified from monospecific antiserum by immunoaffinity chromatography using phosphorylated peptide coupled to agarose beads followed by solid phase adsorption against non phosphorylated peptide.
ポリ/モノ	ポリクローナル
アイソタイプ	IgG

アプリケーション

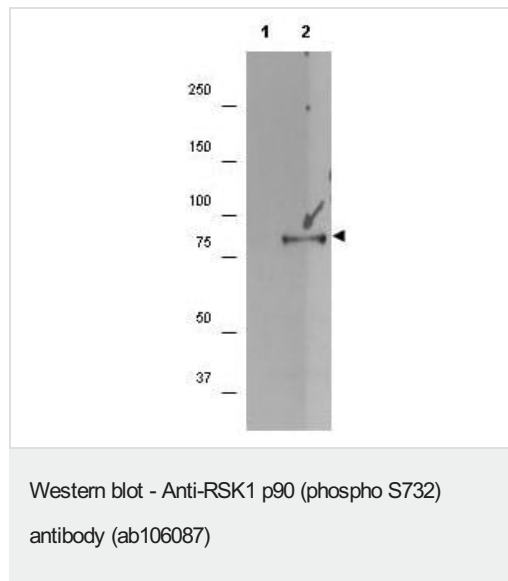
The Abpromise guarantee **Abpromise保証は、** 次のテスト済みアプリケーションにおけるab106087の使用に適用されます
アプリケーションノートには、推奨の開始希釈率がありますが、適切な希釈率につきましてはご検討ください。

アプリケーション	Abreviews	特記事項
WB		1/500 - 1/2000. Predicted molecular weight: 83 kDa.

ターゲット情報

機能	Serine/threonine kinase that may play a role in mediating the growth-factor and stress induced activation of the transcription factor CREB.
配列類似性	Belongs to the protein kinase superfamily. AGC Ser/Thr protein kinase family. S6 kinase subfamily. Contains 1 AGC-kinase C-terminal domain. Contains 2 protein kinase domains.
翻訳後修飾	Autophosphorylated on Ser-380, as part of the activation process.

画像



All lanes : Anti-RSK1 p90 (phospho S732) antibody (ab106087) at 1/1000 dilution

Lane 1 : unstimulated HEK293T cell lysates (absence of serum for 12 h)

Lane 2 : EGF stimulated (lane 2) HEK293T cell lysates (absence of serum for 12 h)

Secondary

All lanes : Goat-anti-Rabbit HRP

Developed using the ECL technique.

Predicted band size: 83 kDa

Please note: All products are "FOR RESEARCH USE ONLY. NOT FOR USE IN DIAGNOSTIC PROCEDURES"

Our Abpromise to you: Quality guaranteed and expert technical support

- Replacement or refund for products not performing as stated on the datasheet
- Valid for 12 months from date of delivery
- Response to your inquiry within 24 hours

- We provide support in Chinese, English, French, German, Japanese and Spanish
- Extensive multi-media technical resources to help you
- We investigate all quality concerns to ensure our products perform to the highest standards

If the product does not perform as described on this datasheet, we will offer a refund or replacement. For full details of the Abpromise, please visit <https://www.abcam.co.jp/abpromise> or contact our technical team.

Terms and conditions

- Guarantee only valid for products bought direct from Abcam or one of our authorized distributors