


Anti-Rsk 2 / MAPKAP Kinase 1b (phospho S227) antibody [EPR2847Y] ab75820

リコンビナント RabMAb

画像数 2

製品の概要

製品名	Anti-Rsk 2 / MAPKAP Kinase 1b (phospho S227) antibody [EPR2847Y]
製品の詳細	Rabbit monoclonal [EPR2847Y] to Rsk 2 / MAPKAP Kinase 1b (phospho S227)
由来種	Rabbit
アプリケーション	適用あり: WB 適用なし: Flow Cyt, ICC/IF or IHC-P
種交差性	交差種: Human 交差が予測される動物種: Mouse, Rat 
免疫原	Synthetic peptide. This information is proprietary to Abcam and/or its suppliers.
ポジティブ・コントロール	HeLa whole cell lysate (ab150035), untreated or treated with calyculin A.
特記事項	This product is a recombinant monoclonal antibody, which offers several advantages including: <ul style="list-style-type: none">- High batch-to-batch consistency and reproducibility- Improved sensitivity and specificity- Long-term security of supply- Animal-free production For more information see here . Our RabMAb [®] technology is a patented hybridoma-based technology for making rabbit monoclonal antibodies. For details on our patents, please refer to RabMAb[®] patents .

製品の特性

製品の状態	Liquid
保存方法	Shipped at 4°C. Store at -20°C. Stable for 12 months at -20°C.
バッファー	pH: 7.20 Preservative: 0.05% Sodium azide Constituents: 0.1% BSA, 40% Glycerol (glycerin, glycerine), 9.85% Tris glycine, 50% Tissue culture supernatant
精製度	Protein A purified
ポリ/モノ	モノクローナル

クローン名 EPR2847Y
アイソタイプ IgG

アプリケーション

The Abpromise guarantee **Abpromise保証は、次のテスト済みアプリケーションにおけるab75820の使用に適用されず**
アプリケーションノートには、推奨の開始希釈率がありますが、適切な希釈率につきましてはご検討ください。

アプリケーション	Abreviews	特記事項
WB		1/1000 - 1/2000. Detects a band of approximately 84 kDa (predicted molecular weight: 84 kDa).

追加情報 Is unsuitable for Flow Cyt, ICC/IF or IHC-P.

ターゲット情報

機能 Serine/threonine kinase that may play a role in mediating the growth-factor and stress induced activation of the transcription factor CREB.

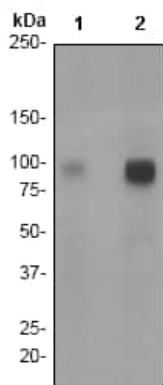
組織特異性 Expressed in many tissues, highest levels in skeletal muscle.

関連疾患 Defects in RPS6KA3 are the cause of Coffin-Lowry syndrome (CLS) [MIM:303600]; an X-linked dominant disorder characterized by severe mental retardation with facial and digital dysmorphisms, and progressive skeletal deformations.

配列類似性 Belongs to the protein kinase superfamily. AGC Ser/Thr protein kinase family. S6 kinase subfamily.
Contains 1 AGC-kinase C-terminal domain.
Contains 2 protein kinase domains.

翻訳後修飾 Autophosphorylated on Ser-386, as part of the activation process.
Ser-227 phosphorylation promotes Ser-386 phosphorylation and leads to basal activation. Full activation by growth factors requires additional phosphorylation on Ser-369.

画像



Western blot - Anti-Rsk 2 / MAPKAP Kinase 1b (phospho S227) antibody [EPR2847Y] (ab75820)

All lanes : Anti-Rsk 2 / MAPKAP Kinase 1b (phospho S227) antibody [EPR2847Y] (ab75820) at 1/2000 dilution

Lane 1 : HeLa cell lysates, untreated

Lane 2 : HeLa cell lysates, treated with calyculin A

Lysates/proteins at 10 µg per lane.

Secondary

All lanes : goat anti-rabbit HRP at 1/2000 dilution

Predicted band size: 84 kDa

Observed band size: 84 kDa

Why choose a recombinant antibody?



Research with confidence
Consistent and reproducible results



Long-term and scalable supply
Recombinant technology



Success from the first experiment
Confirmed specificity



Ethical standards compliant
Animal-free production

Anti-Rsk 2 / MAPKAP Kinase 1b (phospho S227) antibody [EPR2847Y] (ab75820)

Please note: All products are "FOR RESEARCH USE ONLY. NOT FOR USE IN DIAGNOSTIC PROCEDURES"

Our Abpromise to you: Quality guaranteed and expert technical support

- Replacement or refund for products not performing as stated on the datasheet
- Valid for 12 months from date of delivery
- Response to your inquiry within 24 hours
- We provide support in Chinese, English, French, German, Japanese and Spanish
- Extensive multi-media technical resources to help you
- We investigate all quality concerns to ensure our products perform to the highest standards

If the product does not perform as described on this datasheet, we will offer a refund or replacement. For full details of the Abpromise, please visit <https://www.abcam.co.jp/abpromise> or contact our technical team.

Terms and conditions

- Guarantee only valid for products bought direct from Abcam or one of our authorized distributors