

# Anti-RRAGC antibody [2938C3a] ab76577

画像数 1

### 製品の概要

製品名	Anti-RRAGC antibody [2938C3a]
製品の詳細	Mouse monoclonal [2938C3a] to RRAGC
由来種	Mouse
アプリケーション	<b>適用あり:</b> WB
種交差性	<b>交差種:</b> Recombinant fragment
免疫原	Recombinant fragment comprising of 50-200 amino acids from near the N terminus of Human RRAGC (NM_022157).
ポジティブ・コントロール	Recombinant fragment of human RRAGC.
特記事項	<p>The Life Science industry has been in the grips of a reproducibility crisis for a number of years. Abcam is leading the way in addressing this with our range of recombinant monoclonal antibodies and knockout edited cell lines for gold-standard validation. Please check that this product meets your needs before purchasing.</p> <p>If you have any questions, special requirements or concerns, please send us an inquiry and/or contact our Support team ahead of purchase. Recommended alternatives for this product can be found below, along with publications, customer reviews and Q&amp;As</p>

### 製品の特性

製品の状態	Liquid
保存方法	Shipped at 4°C. Upon delivery aliquot and store at -20°C. Avoid repeated freeze / thaw cycles.
バッファー	pH: 7.40 Preservative: 0.05% Sodium azide Constituents: 1% BSA, 0.03% Potassium phosphate, 0.812% Sodium chloride, 0.1312% Sodium phosphate, 0.0225% Potassium chloride, PBS
精製度	Protein G purified
特記事項 (精製)	ab76577 was purified using protein G column chromatography from culture supernatant of hybridoma cultured in a medium containing bovine IgG-depleted (approximately 95%) fetal bovine serum and filtered through a 0.22µm membrane.
ポリ/モノ	モノクローナル
クローン名	2938C3a

## アプリケーション

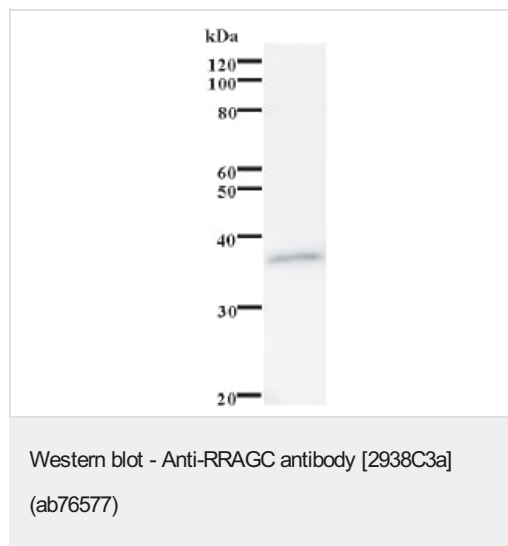
**The Abpromise guarantee** **Abpromise保証は、次のテスト済みアプリケーションにおけるab76577の使用に適用されます**  
アプリケーションノートには、推奨の開始希釈率がありますが、適切な希釈率につきましてはご検討ください。

アプリケーション	Abreviews	特記事項
WB		Use a concentration of 0.2 - 2 µg/ml. Detects a band of approximately 37 kDa (predicted molecular weight: 44 kDa).

## ターゲット情報

<b>機能</b>	Has guanine nucleotide-binding activity but weak intrinsic GTPase activity. Probably required for the amino acid-induced relocalization of mTORC1 to the lysosomes and its subsequent activation by the GTPase RHEB. This is a crucial step in the activation of the TOR signaling cascade by amino acids.
<b>配列類似性</b>	Belongs to the GTR/RAG GTP-binding protein family.
<b>細胞内局在</b>	Cytoplasm. Nucleus. Lysosome. Predominantly cytoplasmic. May shuttle between the cytoplasm and nucleus, depending on the bound nucleotide state of associated RRAGA.

## 画像



Anti-RRAGC antibody [2938C3a] (ab76577) at 2 µg/ml + immunising recombinant protein

**Predicted band size:** 44 kDa

**Observed band size:** 37 kDa

The molecular weight of the band on the western blot does not correspond to the molecular weight of the natural protein because only a fragment of the protein was used.

**Please note:** All products are "FOR RESEARCH USE ONLY. NOT FOR USE IN DIAGNOSTIC PROCEDURES"

## Our Abpromise to you: Quality guaranteed and expert technical support

- Replacement or refund for products not performing as stated on the datasheet
- Valid for 12 months from date of delivery

- Response to your inquiry within 24 hours
- We provide support in Chinese, English, French, German, Japanese and Spanish
- Extensive multi-media technical resources to help you
- We investigate all quality concerns to ensure our products perform to the highest standards

If the product does not perform as described on this datasheet, we will offer a refund or replacement. For full details of the Abpromise, please visit <https://www.abcam.co.jp/abpromise> or contact our technical team.

### **Terms and conditions**

---

- Guarantee only valid for products bought direct from Abcam or one of our authorized distributors