



### Anti-Rpt5/TBP-1 antibody ab22676

**3 References**   [画像数 1](#)

#### 製品の概要

製品名	Anti-Rpt5/TBP-1 antibody
製品の詳細	Rabbit polyclonal to Rpt5/TBP-1
由来種	Rabbit
特異性	ab22676 reacts with 19S regulator ATPase subunit Rpt5/TBP-1 (Yta1).
アプリケーション	<b>適用あり:</b> WB
種交差性	<b>交差種:</b> Saccharomyces cerevisiae, Arabidopsis thaliana, Fungi
免疫原	Recombinant fragment corresponding to Saccharomyces cerevisiae Rpt5/TBP-1 aa 1-100 (N terminal). Sequence:  MATLEELDAQTLPGDDELDQEILNLSTQELQTRAKLLDNEIR IFRSELQR LSHENNVMLEKIKDNKEKIKNNRQLPYLVANVVEVMDMNEIE DKENSEST  <div>  <a href="#">Run BLAST with</a>  <a href="#">Run BLAST with</a> </div>
ポジティブ・コントロール	Yeast 26S proteasome
特記事項	<p>The Life Science industry has been in the grips of a reproducibility crisis for a number of years. Abcam is leading the way in addressing this with our range of recombinant monoclonal antibodies and knockout edited cell lines for gold-standard validation. Please check that this product meets your needs before purchasing.</p> <p>If you have any questions, special requirements or concerns, please send us an inquiry and/or contact our Support team ahead of purchase. Recommended alternatives for this product can be found below, along with publications, customer reviews and Q&amp;As</p>

#### 製品の特性

製品の状態	Liquid
保存方法	Shipped at 4°C. Upon delivery aliquot and store at -20°C. Avoid freeze / thaw cycles.
バッファー	Constituent: Whole serum
精製度	Whole antiserum
ポリ/モノ	ポリクローナル

## アプリケーション

## The Abpromise guarantee

**Abpromise保証は、次のテスト済みアプリケーションにおけるab22676の使用に適用されます**

アプリケーションノートには、推奨の開始希釈率がありますが、適切な希釈率につきましてはご検討ください。

アプリケーション	Abreviews	特記事項
WB		

## 追加情報

WB: 1/10000 - 1/50000. Detects a band of approximately 48 kDa (predicted molecular weight: 48 kDa).

Notes: Dilute to working strength with phosphate buffered saline pH 7.2-7.4 and 1% normal goat serum (if a goat anti-rabbit IgG linker antibody is to be used).

Not tested in other applications.

Optimal dilutions/concentrations should be determined by the end user.

## ターゲット情報

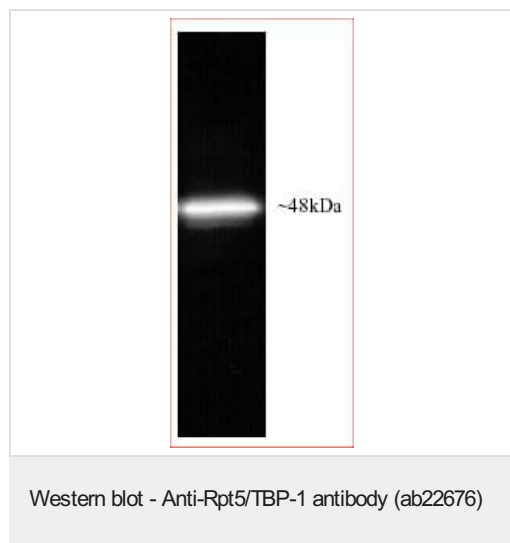
## 関連性

In the yeast *S. cerevisiae* 12 different members of a novel gene family of putative ATPases have been identified and characterised. Due to their similarities to TBP1, a human immunodeficiency tat binding protein, they have been designated the YTA family or yeast tat binding analogues. All share a region of high similarity of approximately 300 amino acids in length. Rpt5p or YTA1, is one of six ATPases of the 19S regulatory particle of the 26S proteasome involved in the degradation of ubiquitinated substrates.

## 細胞内局在

Nuclear

## 画像



Anti-Rpt5/TBP-1 antibody (ab22676) at 1/25000 dilution (PVDF blotting membrane)

Developed using the ECL technique.

Performed under reducing conditions.

**Predicted band size:** 48 kDa

**Observed band size:** 48 kDa

**Exposure time:** 1 minute

### **Our Abpromise to you: Quality guaranteed and expert technical support**

---

- Replacement or refund for products not performing as stated on the datasheet
- Valid for 12 months from date of delivery
- Response to your inquiry within 24 hours
  
- We provide support in Chinese, English, French, German, Japanese and Spanish
- Extensive multi-media technical resources to help you
- We investigate all quality concerns to ensure our products perform to the highest standards

If the product does not perform as described on this datasheet, we will offer a refund or replacement. For full details of the Abpromise, please visit <https://www.abcam.co.jp/abpromise> or contact our technical team.

### **Terms and conditions**

---

- Guarantee only valid for products bought direct from Abcam or one of our authorized distributors