

Anti-RPS6 (phospho S235 + S236) antibody [SP50] ab101691

リコンビナント **RabMAb**

画像数 8

製品の概要

| | |
|--------------|---|
| 製品名 | Anti-RPS6 (phospho S235 + S236) antibody [SP50] |
| 製品の詳細 | Rabbit monoclonal [SP50] to RPS6 (phospho S235 + S236) |
| 由来種 | Rabbit |
| アプリケーション | 適用あり: Dot blot, IHC-P, ICC/IF, Flow Cyt (Intra) |
| 種交差性 | 交差種: Mouse, Human |
| 免疫原 | Synthetic peptide within Human RPS6 aa 200 to the C-terminus (phospho S235 + S236). The exact sequence is proprietary. Database link: <u>P62753</u> |
| ポジティブ・コントロール | IHC-P: Human breast carcinoma and tonsil tissue; Mouse Spleen tissue; Rat Spleen Tissue ICC/IF: PC-3 cells. Flow Cyt (Intra): PC-3 cells. |
| 特記事項 | This product is FOR RESEARCH USE ONLY. For commercial use, please contact partnerships@abcam.com. Rat: We have preliminary internal testing data to indicate this antibody may not react with this species. Please contact us for more information. |

製品の特性

| | |
|----------|--|
| 製品の状態 | Liquid |
| 保存方法 | Shipped at 4°C. Store at +4°C. Do Not Freeze. |
| バッファー | pH: 7.60 Preservative: 0.1% Sodium azide Constituents: PBS, 1% BSA |
| 精製度 | Protein A/G purified |
| 特記事項(精製) | Purified from TCS by protein A/G. |
| ポリ/モノ | モノクローナル |
| クローン名 | SP50 |
| アイソタイプ | IgG |

アプリケーション

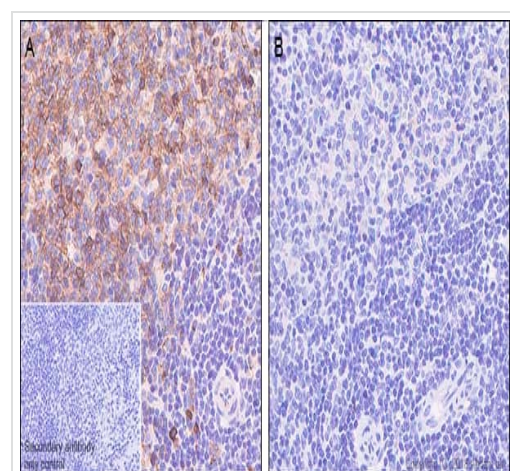
The Abpromise guarantee Abpromise保証は、 次のテスト済みアプリケーションにおけるab101691の使用に適用されます
アプリケーションノートには、推奨の開始希釈率がありますが、適切な希釈率につきましてはご確認ください。

| アプリケーション | Abreviews | 特記事項 |
|------------------|-----------|---|
| Dot blot | | Use a concentration of 0.123 µg/ml. |
| IHC-P | | 1/100. Perform heat mediated antigen retrieval with citrate buffer pH 6 before commencing with IHC staining protocol. |
| ICC/IF | | 1/500. |
| Flow Cyt (Intra) | | 1/200. |

ターゲット情報

| | |
|-------|--|
| 機能 | May play an important role in controlling cell growth and proliferation through the selective translation of particular classes of mRNA. |
| 配列類似性 | Belongs to the ribosomal protein S6e family. |
| 翻訳後修飾 | Ribosomal protein S6 is the major substrate of protein kinases in eukaryote ribosomes. The phosphorylation is stimulated by growth factors, tumor promoting agents, and mitogens. It is dephosphorylated at growth arrest. |

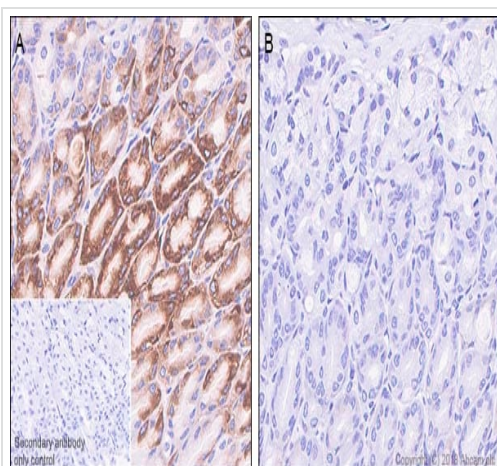
画像



Immunohistochemistry (Formalin/PFA-fixed paraffin-embedded sections) - Anti-RPS6 (phospho S235 + S236) antibody [SP50] (ab101691)

Immunohistochemistry (Formalin/PFA-fixed paraffin-embedded sections) analysis of Rat spleen tissue sections labeling RPS6 with ab101691 at 1/100 dilution (1.23 µg/ml). Heat mediated antigen retrieval with sodium citrate buffer (pH 6.0, epitope retrieval solution 1) for 10mins. Dako™REAL™ EnVision™ Detection System (K5007) was used as the secondary antibody. Hematoxylin was used as a counterstain. Cytoplasmic staining on human rat spleen without alkaline phosphatase treatment (image A); and no signal was detected when tissues were treated with alkaline phosphatase (image B), performed on a Leica Biosystems BOND™ RX instrument.

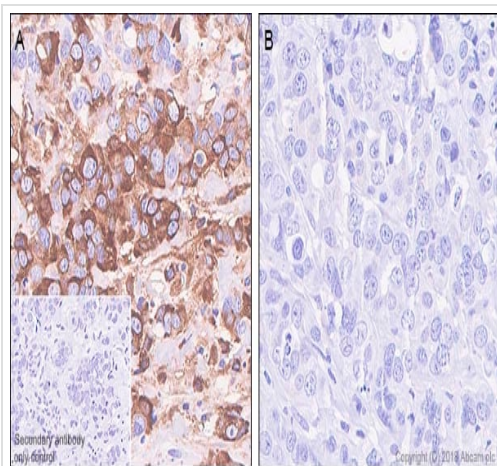
The section was incubated with ab101691 for 10 mins at room temperature.



Immunohistochemistry (Formalin/PFA-fixed paraffin-embedded sections) - Anti-RPS6 (phospho S235 + S236) antibody [SP50] (ab101691)

Immunohistochemistry (Formalin/PFA-fixed paraffin-embedded sections) analysis of Mouse stomach tissue sections labeling RPS6 with ab101691 at 1/100 dilution (1.23 µg/ml). Heat mediated antigen retrieval with sodium citrate buffer (pH 6.0, epitope retrieval solution 1) for 10mins. Dako™REAL™ EnVision™ Detection System (K5007) was used as the secondary antibody. Hematoxylin was used as a counterstain. Cytoplasmic staining on mouse stomach without alkaline phosphatase treatment (image A); and no signal was detected when tissues were treated with alkaline phosphatase (image B), performed on a Leica Biosystems BOND™ RX instrument.

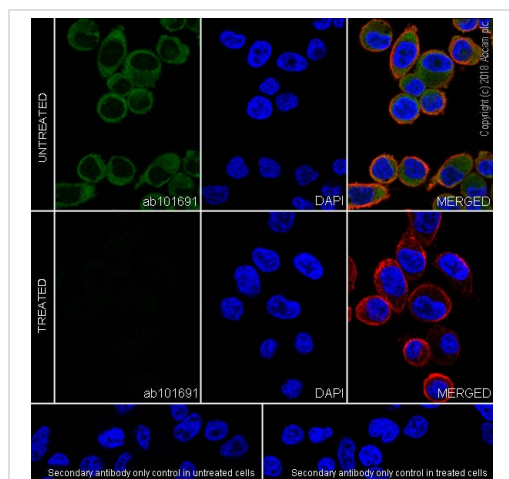
The section was incubated with ab101691 for 10 mins at room temperature.



Immunohistochemistry (Formalin/PFA-fixed paraffin-embedded sections) - Anti-RPS6 (phospho S235 + S236) antibody [SP50] (ab101691)

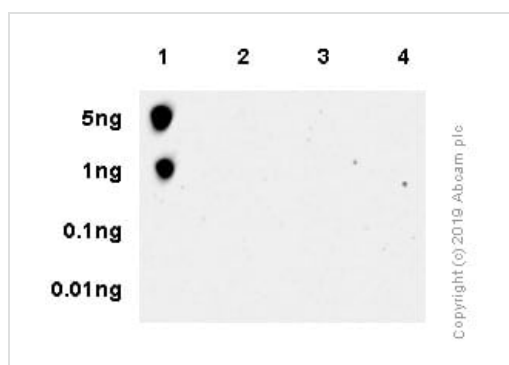
Immunohistochemistry (Formalin/PFA-fixed paraffin-embedded sections) analysis of Human breast carcinoma tissue sections labeling RPS6 with ab101691 at 1/100 dilution (1.23 µg/ml). Heat mediated antigen retrieval with sodium citrate buffer (pH 6.0, epitope retrieval solution 1) for 10mins. Dako™ REAL™ EnVision™ Detection System (K5007) was used as the secondary antibody. Hematoxylin was used as a counterstain. Cytoplasmic staining on human breast carcinoma without alkaline phosphatase treatment (image A); and no signal was detected when tissues were treated with alkaline phosphatase (image B), performed on a Leica Biosystems BOND™ RX instrument.

The section was incubated with ab101691 for 10 mins at room temperature.



Immunocytochemistry/ Immunofluorescence - Anti-RPS6 (phospho S235 + S236) antibody [SP50] (ab101691)

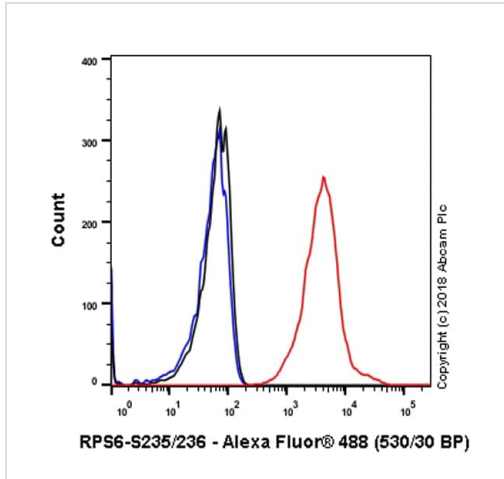
Immunocytochemistry/ Immunofluorescence analysis of PC-3 (human prostate adenocarcinoma epithelial cell) treated with Lambda phosphatase cells labeling RPS6 with purified ab101691 at 1:500 (0.25 µg/ml). Cells were fixed in 4% paraformaldehyde and permeabilized with 0.1% Triton X-100. Cells were counterstained with Ab195889 Anti-alpha Tubulin antibody [DM1A] - Microtubule Marker (Alexa Fluor® 594) 1:200 (2.5 µg/ml). Goat anti rabbit IgG (Alexa Fluor® 488, [ab150077](#)) was used as the secondary antibody at 1:1000 (2 µg/ml) dilution. DAPI nuclear counterstain. PBS instead of the primary antibody was used as the secondary antibody only control.



Dot Blot - Anti-RPS6 (phospho S235 + S236) antibody [SP50] (ab101691)

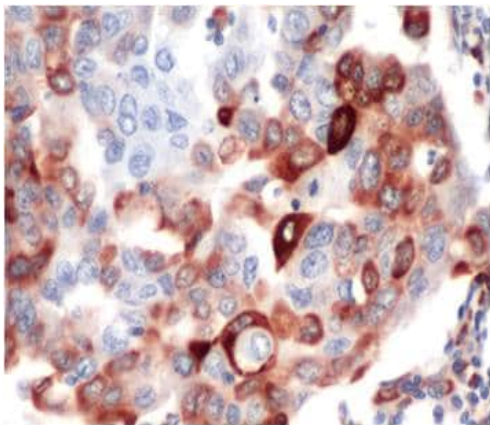
Dot blot analysis of RPS6 (phospho S235 + S236) peptide (Lane 1), RPS6 (phospho S235) peptide (phospho 2) RPS6 (phospho S236) peptide (Lane 3) and RPS6 non-phospho peptide (Lane 4) labeling RPS6 (phospho S235 + S236) peptide with purified ab101691 at 0.123 ug/mL. [ab97051](#) was used as the secondary antibody at 0.01 ug/mL.

Blocking buffer: 5% NFDM/TBST. Dilution buffer: 5% NFDM /TBST



Flow Cytometry analysis of PC-3 (Human prostate adenocarcinoma epithelial cell) cells labeling RPS6 with purified ab101691 at 1:200 dilution (0.615 µg/ml) Red. Cells were fixed with 4% paraformaldehyde . A Goat anti rabbit IgG (Alexa Fluor® 488, **ab150077**) secondary antibody was used at 1:2000 dilution. Isotype control - Rabbit monoclonal IgG (**ab172730**) / Black. Unlabeled control - Unlabelled cells / Blue.

Flow Cytometry (Intracellular) - Anti-RPS6 (phospho S235 + S236) antibody [SP50] (ab101691)



ab101691 at 1/100 dilution staining S6K in Human breast carcinoma by Immunohistochemistry Formalin-fixed, Paraffin-embedded tissue.

Immunohistochemistry (Formalin/PFA-fixed paraffin-embedded sections) - Anti-RPS6 (phospho S235 + S236) antibody [SP50] (ab101691)

Why choose a recombinant antibody?



Research with confidence
Consistent and reproducible results



Long-term and scalable supply
Recombinant technology



Success from the first experiment
Confirmed specificity



Ethical standards compliant
Animal-free production

Anti-RPS6 (phospho S235 + S236) antibody [SP50]
(ab101691)

Please note: All products are "FOR RESEARCH USE ONLY. NOT FOR USE IN DIAGNOSTIC PROCEDURES"

Our Abpromise to you: Quality guaranteed and expert technical support

- Replacement or refund for products not performing as stated on the datasheet
- Valid for 12 months from date of delivery
- Response to your inquiry within 24 hours
- We provide support in Chinese, English, French, German, Japanese and Spanish
- Extensive multi-media technical resources to help you
- We investigate all quality concerns to ensure our products perform to the highest standards

If the product does not perform as described on this datasheet, we will offer a refund or replacement. For full details of the Abpromise, please visit <https://www.abcam.co.jp/abpromise> or contact our technical team.

Terms and conditions

- Guarantee only valid for products bought direct from Abcam or one of our authorized distributors