


Anti-RPS6 antibody ab127980

画像数 3

製品の概要

製品名	Anti-RPS6 antibody
製品の詳細	Rabbit polyclonal to RPS6
由来種	Rabbit
特異性	ab127980 detects endogenous levels of total S6 Ribosomal Protein protein.
アプリケーション	適用あり: WB, IHC-P, ICC/IF
種交差性	交差種: Human 交差が予測される動物種: Mouse, Rat 
免疫原	Synthetic peptide, corresponding to amino acids at the C-terminus of Human RPS6.
ポジティブ・コントロール	Human Pancreas tissue; HeLa cell extracts, treated with TNF-a 20ng/ml; HeLa cells.
特記事項	<p>The Life Science industry has been in the grips of a reproducibility crisis for a number of years. Abcam is leading the way in addressing this with our range of recombinant monoclonal antibodies and knockout edited cell lines for gold-standard validation. Please check that this product meets your needs before purchasing.</p> <p>If you have any questions, special requirements or concerns, please send us an inquiry and/or contact our Support team ahead of purchase. Recommended alternatives for this product can be found below, along with publications, customer reviews and Q&As</p>

製品の特性

製品の状態	Liquid
保存方法	Shipped at 4°C. Store at -20°C. Stable for 12 months at -20°C.
バッファー	<p>pH: 7.40</p> <p>Preservative: 0.02% Sodium azide</p> <p>Constituents: 49% PBS, 0.88% Sodium chloride, 50% Glycerol (glycerin, glycerine)</p> <p>PBS without Mg2+ or Ca2+ .</p>
精製度	Immunogen affinity purified
ポリ/モノ	ポリクローナル
アイソタイプ	IgG

アプリケーション

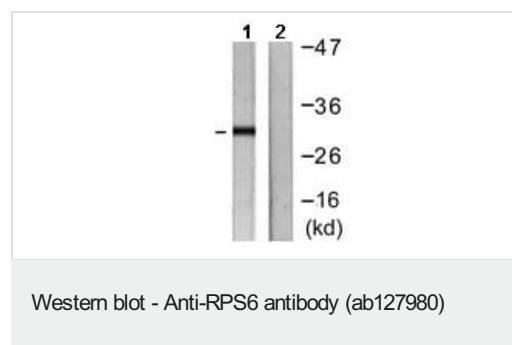
The Abpromise guarantee Abpromise保証は、 次のテスト済みアプリケーションにおけるab127980の使用に適用されます
アプリケーションノートには、推奨の開始希釈率がありますが、適切な希釈率につきましてはご確認ください。

アプリケーション	Abreviews	特記事項
WB		1/500 - 1/1000. Predicted molecular weight: 29 kDa.
IHC-P		Use a concentration of 2.5 - 5 µg/ml. Perform heat mediated antigen retrieval with citrate buffer pH 6 before commencing with IHC staining protocol.
ICC/IF		1/100 - 1/500.

ターゲット情報

機能	May play an important role in controlling cell growth and proliferation through the selective translation of particular classes of mRNA.
配列類似性	Belongs to the ribosomal protein S6e family.
翻訳後修飾	Ribosomal protein S6 is the major substrate of protein kinases in eukaryote ribosomes. The phosphorylation is stimulated by growth factors, tumor promoting agents, and mitogens. It is dephosphorylated at growth arrest.

画像



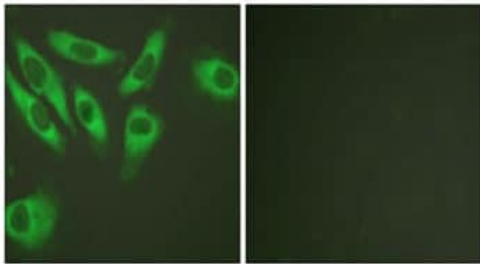
All lanes : Anti-RPS6 antibody (ab127980) at 1/500 dilution

Lane 1 : HeLa cell extract, treated with TNF- α 20ng/ml for 2 minutes

Lane 2 : HeLa cell extract, treated with the synthesized peptide.

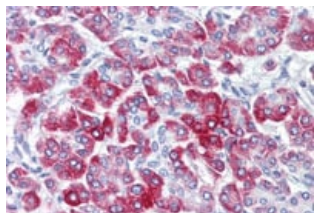
Developed using the ECL technique.

Predicted band size: 29 kDa



ab127980 at 1/100 dilution, staining RPS6 in HeLa cells by Immunofluorescence. The image on the right is treated with synthesized peptide.

Immunocytochemistry/ Immunofluorescence - Anti-RPS6 antibody (ab127980)



ab127980 at 2.5µg/ml, staining RPS6 in Formalin-Fixed, Paraffin-Embedded Human pancreas tissue by Immunohistochemistry.

Immunohistochemistry (Formalin/PFA-fixed paraffin-embedded sections) - Anti-RPS6 antibody (ab127980)

Please note: All products are "FOR RESEARCH USE ONLY. NOT FOR USE IN DIAGNOSTIC PROCEDURES"

Our Abpromise to you: Quality guaranteed and expert technical support

- Replacement or refund for products not performing as stated on the datasheet
- Valid for 12 months from date of delivery
- Response to your inquiry within 24 hours
- We provide support in Chinese, English, French, German, Japanese and Spanish
- Extensive multi-media technical resources to help you
- We investigate all quality concerns to ensure our products perform to the highest standards

If the product does not perform as described on this datasheet, we will offer a refund or replacement. For full details of the Abpromise, please visit <https://www.abcam.co.jp/abpromise> or contact our technical team.

Terms and conditions

- Guarantee only valid for products bought direct from Abcam or one of our authorized distributors