




### Anti-RPS27/MPS1 antibody ab4385

**4 References** [画像数 1](#)

#### 製品の概要

製品名	Anti-RPS27/MPS1 antibody
製品の詳細	Goat polyclonal to RPS27/MPS1
由来種	Goat
アプリケーション	<b>適用あり:</b> WB
種交差性	<b>交差種:</b> Human <b>交差が予測される動物種:</b> Mouse, Rat 
免疫原	Synthetic peptide corresponding to Human RPS27/MPS1 aa 2-14 (N terminal). Sequence: PLAKDLLHPSPEE-C  (Peptide available as <a href="#">ab23033</a> ) <div>  <a href="#">Run BLAST with</a>  <a href="#">Run BLAST with</a> </div>
特記事項	<p>Official Gene Symbol - RPS27. LocusLink ID - 6232 (human); 57294 (mouse); 94266 (rat). Gene Ontology terms - structural constituent of ribosome; RNA binding; zinc ion binding; protein biosynthesis; cell proliferation; signal transduction; ribosome; cytosolic small ribosomal subunit (sensu Eukarya); intracellular.</p> <p>The Life Science industry has been in the grips of a reproducibility crisis for a number of years. Abcam is leading the way in addressing this with our range of recombinant monoclonal antibodies and knockout edited cell lines for gold-standard validation. Please check that this product meets your needs before purchasing.</p> <p>If you have any questions, special requirements or concerns, please send us an inquiry and/or contact our Support team ahead of purchase. Recommended alternatives for this product can be found below, along with publications, customer reviews and Q&amp;As</p>

#### 製品の特性

製品の状態	Liquid
保存方法	Shipped at 4°C. Upon delivery aliquot and store at -20°C or -80°C. Avoid repeated freeze / thaw cycles.
バッファー	pH: 7.30 Preservative: 0.02% Sodium azide Constituents: 0.5% Tris, 0.5% BSA

精製度	Immunogen affinity purified
特記事項 (精製)	Purified from goat serum by ammonium sulphate precipitation followed by antigen affinity chromatography using the immunizing peptide.
ポリ/モノ	ポリクローナル
アイソタイプ	IgG

## アプリケーション

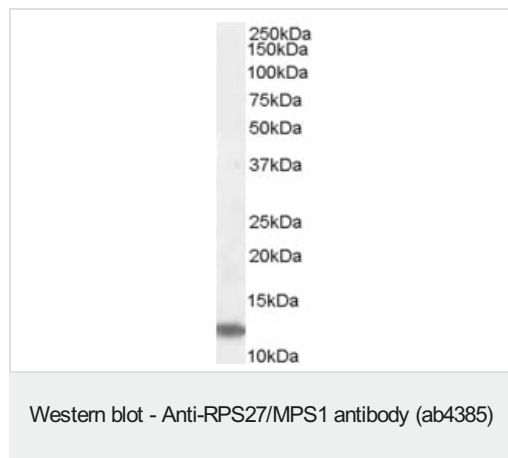
**The Abpromise guarantee** **Abpromise保証は、次のテスト済みアプリケーションにおけるab4385の使用に適用されます**  
 アプリケーションノートには、推奨の開始希釈率がありますが、適切な希釈率につきましてはご検討ください。

アプリケーション	Abreviews	特記事項
WB		Use a concentration of 0.03 - 0.1 µg/ml. Detects a band of approximately 12 kDa (predicted molecular weight: 10 kDa). 1 hour primary incubation is recommended for this product.

## ターゲット情報

組織特異性	Expressed in a wide variety of actively proliferating cells and tumor tissues.
配列類似性	Belongs to the ribosomal protein S27e family.

## 画像



Anti-RPS27/MPS1 antibody (ab4385) at 0.05 µg/ml + Jurkat lysate (35µg protein in RIPA buffer).

**Predicted band size:** 10 kDa

**Observed band size:** 12 kDa

Primary incubation was 1 hour. Detected by chemiluminescence.

**Please note:** All products are "FOR RESEARCH USE ONLY. NOT FOR USE IN DIAGNOSTIC PROCEDURES"

## Our Abpromise to you: Quality guaranteed and expert technical support

- Replacement or refund for products not performing as stated on the datasheet
- Valid for 12 months from date of delivery
- Response to your inquiry within 24 hours

- We provide support in Chinese, English, French, German, Japanese and Spanish
- Extensive multi-media technical resources to help you
- We investigate all quality concerns to ensure our products perform to the highest standards

If the product does not perform as described on this datasheet, we will offer a refund or replacement. For full details of the Abpromise, please visit <https://www.abcam.co.jp/abpromise> or contact our technical team.

#### **Terms and conditions**

---

- Guarantee only valid for products bought direct from Abcam or one of our authorized distributors