




Anti-RPRD2 antibody ab17996

画像数 1

製品の概要

製品名	Anti-RPRD2 antibody
製品の詳細	Goat polyclonal to RPRD2
由来種	Goat
アプリケーション	適用あり: WB
種交差性	交差種: Human 交差が予測される動物種: Chimpanzee, Gorilla, Orangutan 
免疫原	Synthetic peptide within Human RPRD2 aa 1000-1100. The exact immunogen sequence used to generate this antibody is proprietary information. If additional detail on the immunogen is needed to determine the suitability of the antibody for your needs, please contact our Scientific Support team to discuss your requirements. Database link: Q5VT52  Run BLAST with  Run BLAST with
ポジティブ・コントロール	HEK293 cells
特記事項	<p>The Life Science industry has been in the grips of a reproducibility crisis for a number of years. Abcam is leading the way in addressing this with our range of recombinant monoclonal antibodies and knockout edited cell lines for gold-standard validation. Please check that this product meets your needs before purchasing.</p> <p>If you have any questions, special requirements or concerns, please send us an inquiry and/or contact our Support team ahead of purchase. Recommended alternatives for this product can be found below, along with publications, customer reviews and Q&As</p>

製品の特性

製品の状態	Liquid
保存方法	Shipped at 4°C. Upon delivery aliquot and store at -20°C. Avoid freeze / thaw cycles.
バッファー	pH: 7 Preservative: 0.09% Sodium azide Constituents: 0.021% PBS, 1.764% Sodium citrate, 1.815% Tris
精製度	Immunogen affinity purified
特記事項(精製)	Antibody was affinity purified using an epitope specific to RPRD2 immobilized on solid support.
ポリ/モノ	ポリクローナル

アイソタイプ

IgG

アプリケーション

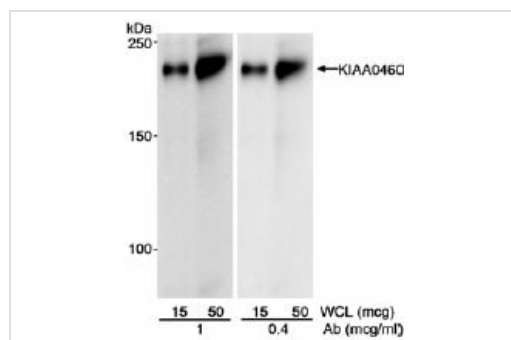
The Abpromise guarantee **Abpromise保証は、次のテスト済みアプリケーションにおけるab17996の使用に適用されます**
アプリケーションノートには、推奨の開始希釈率がありますが、適切な希釈率につきましてはご検討ください。

アプリケーション	Abreviews	特記事項
WB		1/1000 - 1/10000. Detects a band of approximately 200 kDa (predicted molecular weight: 155 kDa).

ターゲット情報

配列類似性 Contains 1 CID domain.

画像



Western blot - Anti-RPRD2 antibody (ab17996)

Lanes 1-2 : Anti-RPRD2 antibody (ab17996) at 1 µg/ml

Lanes 3-4 : Anti-RPRD2 antibody (ab17996) at 0.4 µg/ml

Lanes 1 & 3 : Whole cell lysate from HEK293 cells at 15 µg

Lanes 2 & 4 : Whole cell lysate from HEK293 cells at 50 µg

Predicted band size: 155 kDa

Observed band size: 225 kDa

Exposure time: 1 minute

Detection of Human RPRD2 by Western Blot.

Samples: Whole cell lysate (15 and 50 µg) from HEK293 cells.

Antibody: Affinity purified goat anti-RPRD2 antibody used at 1 and 0.4 mg/ml.

Detection: Chemiluminescence with an exposure time of 1 minute.

Please note: All products are "FOR RESEARCH USE ONLY. NOT FOR USE IN DIAGNOSTIC PROCEDURES"

Our Abpromise to you: Quality guaranteed and expert technical support

- Replacement or refund for products not performing as stated on the datasheet

- Valid for 12 months from date of delivery
- Response to your inquiry within 24 hours

- We provide support in Chinese, English, French, German, Japanese and Spanish
- Extensive multi-media technical resources to help you
- We investigate all quality concerns to ensure our products perform to the highest standards

If the product does not perform as described on this datasheet, we will offer a refund or replacement. For full details of the Abpromise, please visit <https://www.abcam.co.jp/abpromise> or contact our technical team.

Terms and conditions

- Guarantee only valid for products bought direct from Abcam or one of our authorized distributors