


Anti-RPRD2 antibody ab10373

画像数 1

製品の概要

製品名	Anti-RPRD2 antibody
製品の詳細	Goat polyclonal to RPRD2
由来種	Goat
アプリケーション	適用あり: WB
種交差性	交差種: Human 交差が予測される動物種: Mouse, Rabbit, Cow, Pig, Rhesus monkey, Gorilla, Orangutan, Elephant 
免疫原	Synthetic peptide corresponding to Human RPRD2. (LocusLink ID 23248)
ポジティブ・コントロール	Whole cell lysate from HeLa cells.
特記事項	<p>The Life Science industry has been in the grips of a reproducibility crisis for a number of years. Abcam is leading the way in addressing this with our range of recombinant monoclonal antibodies and knockout edited cell lines for gold-standard validation. Please check that this product meets your needs before purchasing.</p> <p>If you have any questions, special requirements or concerns, please send us an inquiry and/or contact our Support team ahead of purchase. Recommended alternatives for this product can be found below, along with publications, customer reviews and Q&As</p>

製品の特性

製品の状態	Liquid
保存方法	Shipped at 4°C. Upon delivery aliquot and store at -20°C. Avoid freeze / thaw cycles.
バッファー	Preservative: 0.1% Sodium azide Constituents: 0.021% PBS, 1.764% Sodium citrate, 1.815% Tris
精製度	Immunogen affinity purified
ポリ/モノ	ポリクローナル
アイソタイプ	IgG

アプリケーション

The Abpromise guarantee

Abpromise保証は、次のテスト済みアプリケーションにおけるab10373の使用に適用されます

アプリケーションノートには、推奨の開始希釈率がありますが、適切な希釈率につきましてはご確認ください。

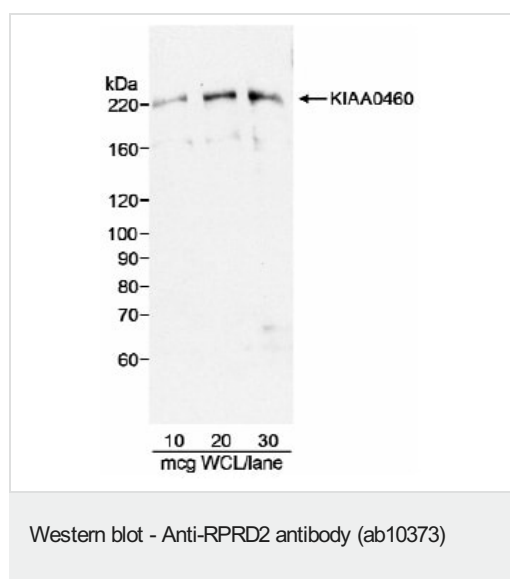
アプリケーション	Abreviews	特記事項
WB		Use at an assay dependent concentration. Detects a band of approximately 220 kDa (predicted molecular weight: 160 kDa).

ターゲット情報

配列類似性

Contains 1 CID domain.

画像



ab10373 detection of human RPRD2 by Western blot. *Samples:*

Whole cell lysate (WCL; amounts indicated) from HeLa cells.

Antibody: ab10373 used at 1 µg/ml. *Detection:*

Chemiluminescence with 3 minute exposure.

ab10373 detection of human RPRD2 by Western blot. *Samples:*

Whole cell lysate (WCL; amounts indicated) from HeLa cells.

Antibody: ab10373 used at 1 µg/ml. *Detection:* Chemiluminescence with 3 minute exposure.

Please note: All products are "FOR RESEARCH USE ONLY. NOT FOR USE IN DIAGNOSTIC PROCEDURES"

Our Abpromise to you: Quality guaranteed and expert technical support

- Replacement or refund for products not performing as stated on the datasheet
- Valid for 12 months from date of delivery
- Response to your inquiry within 24 hours
- We provide support in Chinese, English, French, German, Japanese and Spanish
- Extensive multi-media technical resources to help you
- We investigate all quality concerns to ensure our products perform to the highest standards

If the product does not perform as described on this datasheet, we will offer a refund or replacement. For full details of the Abpromise, please visit <https://www.abcam.co.jp/abpromise> or contact our technical team.

Terms and conditions

- Guarantee only valid for products bought direct from Abcam or one of our authorized distributors