


### Anti-RPL11 antibody ab79352

★★★★☆ [3 Abreviews](#) [21 References](#) [画像数 4](#)

#### 製品の概要

製品名	Anti-RPL11 antibody
製品の詳細	Rabbit polyclonal to RPL11
由来種	Rabbit
アプリケーション	<b>適用あり:</b> IHC-P, WB, IP
種交差性	<b>交差種:</b> Human, Zebrafish <b>交差が予測される動物種:</b> Mouse, Rat, Cow, Cat, Orangutan 
免疫原	Synthetic peptide corresponding to Human RPL11 aa 150 to the C-terminus (C terminal) conjugated to keyhole limpet haemocyanin. (Peptide available as <a href="#">ab88221</a> )
特記事項	<p>The Life Science industry has been in the grips of a reproducibility crisis for a number of years. Abcam is leading the way in addressing this with our range of recombinant monoclonal antibodies and knockout edited cell lines for gold-standard validation. Please check that this product meets your needs before purchasing.</p> <p>If you have any questions, special requirements or concerns, please send us an inquiry and/or contact our Support team ahead of purchase. Recommended alternatives for this product can be found below, along with publications, customer reviews and Q&amp;As</p>

#### 製品の特性

製品の状態	Liquid
保存方法	Shipped at 4°C. Store at +4°C short term (1-2 weeks). Upon delivery aliquot. Store at -20°C or -80°C. Avoid freeze / thaw cycle.
バッファー	pH: 7.40 Preservative: 0.02% Sodium azide Constituent: PBS
精製度	Immunogen affinity purified
ポリ/モノ	ポリクローナル
	Batches of this product that have a concentration < 1mg/ml may have BSA added as a stabilising agent. If you would like information about the formulation of a specific lot, please contact our scientific support team who will be happy to help.

## アプリケーション

The Abpromise guarantee **Abpromise保証は、次のテスト済みアプリケーションにおけるab79352の使用に適用されません**

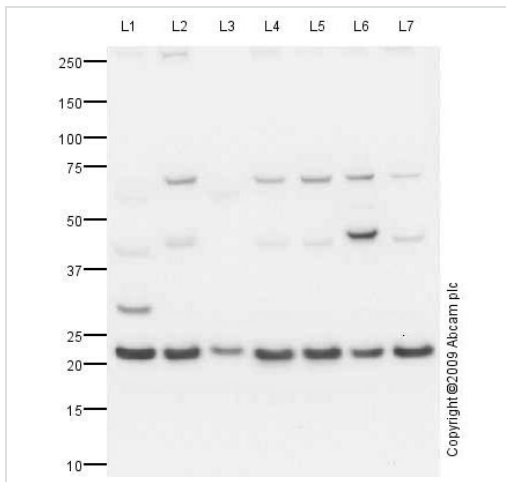
アプリケーションノートには、推奨の開始希釈率がありますが、適切な希釈率につきましてはご検討ください。

アプリケーション	Abreviews	特記事項
IHC-P		Use a concentration of 1 µg/ml. Perform heat mediated antigen retrieval before commencing with IHC staining protocol.
WB	★★★★★ (3)	Use at an assay dependent concentration. Detects a band of approximately 20 kDa (predicted molecular weight: 22 kDa).
IP		Use at an assay dependent concentration.

## ターゲット情報

機能	Binds to 5S ribosomal RNA (By similarity). Required for rRNA maturation and formation of the 60S ribosomal subunits. Promotes nucleolar location of PML.
関連疾患	Defects in RPL11 are the cause of Diamond-Blackfan anemia type 7 (DBA7) [MIM:612562]. DBA7 is a form of Diamond-Blackfan anemia, a congenital non-regenerative hypoplastic anemia that usually presents early in infancy. Diamond-Blackfan anemia is characterized by a moderate to severe macrocytic anemia, erythroblastopenia, and an increased risk of malignancy. 30 to 40% of Diamond-Blackfan anemia patients present with short stature and congenital anomalies, the most frequent being craniofacial (Pierre-Robin syndrome and cleft palate), thumb and urogenital anomalies.
配列類似性	Belongs to the ribosomal protein L5P family.
細胞内局在	Nucleus > nucleolus.

## 画像



Western blot - Anti-RPL11 antibody (ab79352)

**All lanes** : Anti-RPL11 antibody (ab79352) at 1 µg/ml

**Lane 1** : Human liver tissue lysate - total protein (**ab29889**)

**Lane 2** : HepG2 (Human hepatocellular liver carcinoma cell line) Whole Cell Lysate

**Lane 3** : Human brain tissue lysate - total protein (**ab29466**)

**Lane 4** : HeLa (Human epithelial carcinoma cell line) Whole Cell Lysate

**Lane 5** : Jurkat (Human T cell lymphoblast-like cell line) Whole Cell Lysate

**Lane 6** : Caco 2 (Human colonic carcinoma cell line) Whole Cell Lysate

**Lane 7** : HEK293 (Human embryonic kidney cell line) Whole Cell Lysate

Lysates/proteins at 10 µg per lane.

### Secondary

**All lanes** : Goat polyclonal to Rabbit IgG - H&L - Pre-Adsorbed (HRP) at 1/3000 dilution

Developed using the ECL technique.

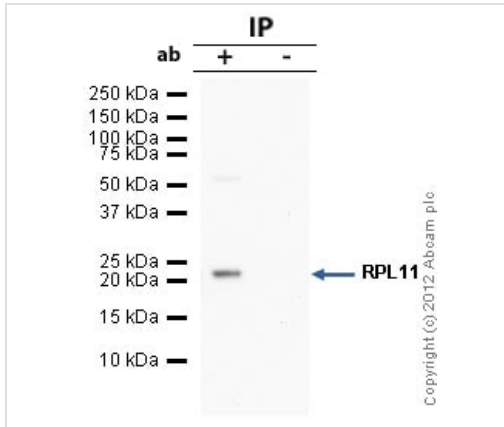
Performed under reducing conditions.

**Predicted band size:** 22 kDa

**Observed band size:** 22 kDa

**Additional bands at:** 30 kDa, 45 kDa, 70 kDa. We are unsure as to the identity of these extra bands.

RPL11 contains a number of potential phosphorylation and acetylation sites (SwissProt) which may explain its migration at a higher molecular weight than predicted.



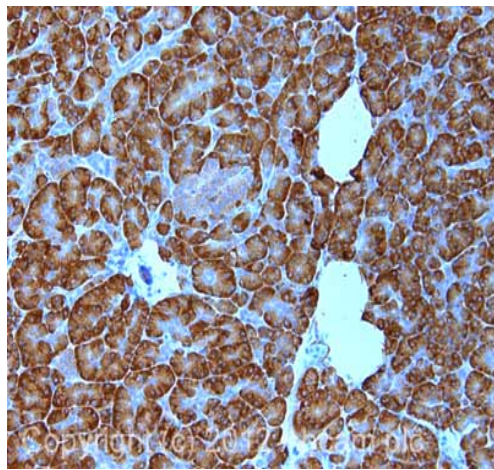
Immunoprecipitation - Anti-RPL11 antibody  
(ab79352)

RPL11 was immunoprecipitated using 0.5mg Jurkat whole cell extract, 5µg of Rabbit polyclonal to RPL11 and 50µl of protein G magnetic beads (+). No antibody was added to the control (-). The antibody was incubated under agitation with Protein G beads for 10min, Jurkat whole cell extract lysate diluted in RIPA buffer was added to each sample and incubated for a further 10min under agitation.

Proteins were eluted by addition of 40µl SDS loading buffer and incubated for 10min at 70°C; 10µl of each sample was separated on a SDS PAGE gel, transferred to a nitrocellulose membrane, blocked with 5% BSA and probed with ab79352.

Secondary: Clean blot (HRP conjugate) at 1/1000 dilution.

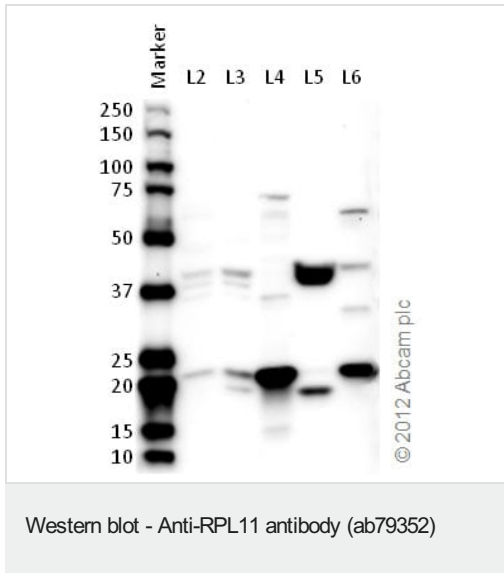
Band: 22kDa: RPL11



- Anti-RPL11 antibody (ab79352)

IHC image of ab79352 staining in human pancreas formalin fixed paraffin embedded tissue section, performed on a Leica Bond™ system using the standard protocol F. The section was pre-treated using heat mediated antigen retrieval with sodium citrate buffer (pH6, epitope retrieval solution 1) for 20 mins. The section was then incubated with ab79352, 1µg/ml, for 15 mins at room temperature and detected using an HRP conjugated compact polymer system. DAB was used as the chromogen. The section was then counterstained with haematoxylin and mounted with DPX.

For other IHC staining systems (automated and non-automated) customers should optimize variable parameters such as antigen retrieval conditions, primary antibody concentration and antibody incubation times.



**All lanes :** Anti-RPL11 antibody (ab79352) at 1 µg/ml

**Lane 1 :** Marker

**Lane 2 :** Zebrafish brain homogenate at 20 µg

**Lane 3 :** Zebrafish heart homogenate at 20 µg

**Lane 4 :** Zebrafish liver homogenate at 20 µg

**Lane 5 :** Zebrafish skeletal muscle homogenate at 20 µg

**Lane 6 :** Human hepatocellular carcinoma cell line at 20 µg

#### Secondary

**All lanes :** Goat polyclonal to Rabbit IgG – H&L – Pre-Adsorbed (HRP) at 1/6000 dilution

Developed using the ECL technique.

Performed under reducing conditions.

**Predicted band size:** 22 kDa

**Observed band size:** 22 kDa

**Exposure time:** 3 minutes

**Please note:** All products are "FOR RESEARCH USE ONLY. NOT FOR USE IN DIAGNOSTIC PROCEDURES"

#### Our Abpromise to you: Quality guaranteed and expert technical support

- Replacement or refund for products not performing as stated on the datasheet
- Valid for 12 months from date of delivery
- Response to your inquiry within 24 hours
- We provide support in Chinese, English, French, German, Japanese and Spanish
- Extensive multi-media technical resources to help you
- We investigate all quality concerns to ensure our products perform to the highest standards

If the product does not perform as described on this datasheet, we will offer a refund or replacement. For full details of the Abpromise, please visit <https://www.abcam.co.jp/abpromise> or contact our technical team.

## Terms and conditions

---

- Guarantee only valid for products bought direct from Abcam or one of our authorized distributors