

### Anti-RPA32/RPA2 (phospho T21) antibody ab61065

★★★★★ **1 Abreviews** **23 References** 画像数 **2**

#### 製品の概要

製品名	Anti-RPA32/RPA2 (phospho T21) antibody
製品の詳細	Rabbit polyclonal to RPA32/RPA2 (phospho T21)
由来種	Rabbit
特異性	ab61065 detects endogenous levels of RPA32/RFA2 only when phosphorylated at threonine 21.
アプリケーション	<b>適用あり:</b> WB, IHC-P
種交差性	<b>交差種:</b> Human
免疫原	Synthetic peptide within Human RPA32/RPA2 aa 1-100 (phospho T21). The exact immunogen sequence used to generate this antibody is proprietary information. If additional detail on the immunogen is needed to determine the suitability of the antibody for your needs, please <b><a href="#">contact</a></b> our Scientific Support team to discuss your requirements. (G-Y-TP-Q-S). Database link: <b><a href="#">P15927</a></b>
特記事項	<p>The Life Science industry has been in the grips of a reproducibility crisis for a number of years. Abcam is leading the way in addressing this with our range of recombinant monoclonal antibodies and knockout edited cell lines for gold-standard validation. Please check that this product meets your needs before purchasing.</p> <p>If you have any questions, special requirements or concerns, please send us an inquiry and/or contact our Support team ahead of purchase. Recommended alternatives for this product can be found below, along with publications, customer reviews and Q&amp;As</p>

#### 製品の特性

製品の状態	Liquid
保存方法	Shipped at 4°C. Upon delivery aliquot and store at -20°C. Avoid freeze / thaw cycles.
バッファー	<p>pH: 7.40</p> <p>Preservative: 0.02% Sodium azide</p> <p>Constituents: PBS, 50% Glycerol (glycerin, glycerine), 0.87% Sodium chloride</p> <p>Without Mg<sup>2+</sup> and Ca<sup>2+</sup></p>
精製度	Immunogen affinity purified
特記事項 (精製)	ab61065 was affinity-purified from rabbit antiserum by affinity chromatography using epitope-specific phosphopeptide. The antibody against non-phosphopeptide was removed by

	chromatography using non-phosphopeptide corresponding to the phosphorylation site.
ポリ/モノ	ポリクローナル
アイソタイプ	IgG

アプリケーション

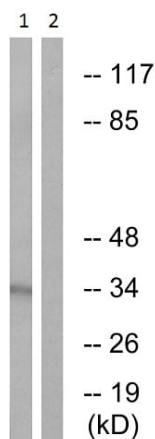
**The Abpromise guarantee**      **Abpromise保証は、** 次のテスト済みアプリケーションにおけるab61065の使用に適用されます  
 アプリケーションノートには、推奨の開始希釈率がありますが、適切な希釈率につきましてはご検討ください。

アプリケーション	Abreviews	特記事項
WB	★★★★★ (1)	Use at an assay dependent concentration.
IHC-P		1/50 - 1/100.

ターゲット情報

機能	<p>Required for DNA recombination, repair and replication. The activity of RP-A is mediated by single-stranded DNA binding and protein interactions.</p> <p>Functions as component of the alternative replication protein A complex (aRPA). aRPA binds single-stranded DNA and probably plays a role in DNA repair; it does not support chromosomal DNA replication and cell cycle progression through S-phase. In vitro, aRPA cannot promote efficient priming by DNA polymerase alpha but supports DNA polymerase delta synthesis in the presence of PCNA and replication factor C (RFC), the dual incision/excision reaction of nucleotide excision repair and RAD51-dependent strand exchange.</p>
翻訳後修飾	<p>Phosphorylated in a cell-cycle-dependent manner (from the S phase until mitosis).</p> <p>Phosphorylated by ATR upon DNA damage, which promotes its translocation to nuclear foci. Can be phosphorylated in vitro by PRKDC/DNA-PK in the presence of Ku and DNA, and by CDK1.</p>
細胞内局在	<p>Nucleus. Nucleus &gt; PML body. Also present in PML nuclear bodies. Redistributes to discrete nuclear foci upon DNA damage.</p>

画像



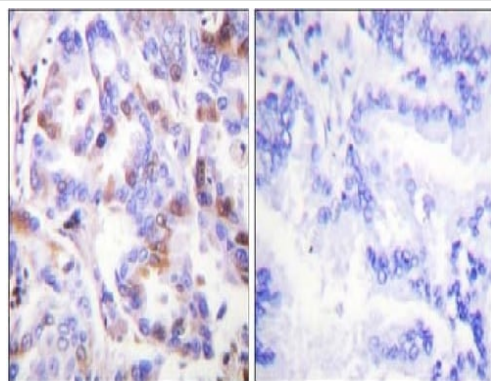
Western blot - Anti-RPA32/RPA2 (phospho T21) antibody (ab61065)

**All lanes :** Anti-RPA32/RPA2 (phospho T21) antibody (ab61065) at 1/500 dilution

**Lane 1 :** HeLa (Human epithelial cell line from cervix adenocarcinoma) cell lysates treated with Adriamycin 0.5 µg/ml 24 hours

**Lane 2 :** HeLa (Human epithelial cell line from cervix adenocarcinoma) cell lysates treated with Adriamycin 0.5 µg/ml 24 hours with immunizing phosphopeptide

Developed using the ECL technique.



Immunohistochemistry (Formalin/PFA-fixed paraffin-embedded sections) - Anti-RPA32/RPA2 (phospho T21) antibody (ab61065)

Immunohistochemistry analysis of paraffin-embedded human lung carcinoma tissue using ab61065 at 1/50 dilution.

Left panel: Without immunizing phosphopeptide.

Right panel: Plus immunizing phosphopeptide.

**Please note:** All products are "FOR RESEARCH USE ONLY. NOT FOR USE IN DIAGNOSTIC PROCEDURES"

### Our Abpromise to you: Quality guaranteed and expert technical support

- Replacement or refund for products not performing as stated on the datasheet
- Valid for 12 months from date of delivery
- Response to your inquiry within 24 hours
- We provide support in Chinese, English, French, German, Japanese and Spanish
- Extensive multi-media technical resources to help you
- We investigate all quality concerns to ensure our products perform to the highest standards

If the product does not perform as described on this datasheet, we will offer a refund or replacement. For full details of the Abpromise, please visit <https://www.abcam.co.jp/abpromise> or contact our technical team.

## Terms and conditions

---

- Guarantee only valid for products bought direct from Abcam or one of our authorized distributors