

Anti-RP105 antibody [MHR73-11] - Low endotoxin, Azide free ab171238

画像数 1

製品の概要

製品名	Anti-RP105 antibody [MHR73-11] - Low endotoxin, Azide free
製品の詳細	Mouse monoclonal [MHR73-11] to RP105 - Low endotoxin, Azide free
由来種	Mouse
アプリケーション	適用あり: Flow Cyt
種交差性	交差種: Human
免疫原	The details of the immunogen for this antibody are not available.
ポジティブ・コントロール	Human peripheral blood leukocyte cells.
特記事項	<p>Endotoxin Level: Less than 0.001 ng/μg antibody, as determined by the LAL assay.</p> <p>The Life Science industry has been in the grips of a reproducibility crisis for a number of years. Abcam is leading the way in addressing this with our range of recombinant monoclonal antibodies and knockout edited cell lines for gold-standard validation. Please check that this product meets your needs before purchasing.</p> <p>If you have any questions, special requirements or concerns, please send us an inquiry and/or contact our Support team ahead of purchase. Recommended alternatives for this product can be found below, along with publications, customer reviews and Q&As</p>

製品の特性

製品の状態	Liquid
保存方法	Shipped at 4°C. Store at +4°C short term (1-2 weeks). Upon delivery aliquot. Store at -20°C long term. Avoid freeze / thaw cycle.
バッファー	pH: 7.20 Constituent: 100% PBS
キャリア・フリー	はい
精製度	Protein G purified
ポリ/モノ	モノクローナル
クローン名	MHR73-11
アイソタイプ	IgG1

アプリケーション

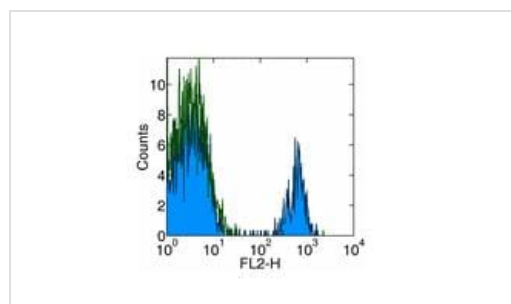
The Abpromise guarantee **Abpromise保証は、次のテスト済みアプリケーションにおけるab171238の使用に適用されます**
アプリケーションノートには、推奨の開始希釈率がありますが、適切な希釈率につきましてはご検討ください。

アプリケーション	Abreviews	特記事項
Flow Cyt		Use at an assay dependent concentration. ab171238 can be used at less than or equal to 1µg per test. A test is defined as the amount (µg) of antibody that will stain a cell sample in a final volume of 100 µL. Cell number should be determined empirically but can range from 10e5 to 10e8 cells/test. It is recommended that the antibody be carefully titrated for optimal performance in the assay of interest.

ターゲット情報

機能	May cooperate with MD-1 and TLR4 to mediate the innate immune response to bacterial lipopolysaccharide (LPS) in B-cells. Leads to NF-kappa-B activation. Also involved in the life/death decision of B-cells.
組織特異性	Expressed mainly on mature peripheral B cells. Detected in spleen, lymph node and appendix. Not detected in pre-B and -T cells.
配列類似性	Belongs to the Toll-like receptor family. Contains 19 LRR (leucine-rich) repeats. Contains 1 LRRCT domain.
細胞内局在	Cell membrane.

画像



Flow cytometry analysis of Human peripheral blood cells (10e5 to 10e8) labeling RP105 with the PE conjugated version of ab171238. Appropriate isotype controls were used (open histogram). Cells in the lymphocyte population were used for analysis.

Flow Cytometry - Anti-RP105 antibody [MHR73-11] -
Low endotoxin, Azide free (ab171238)

Please note: All products are "FOR RESEARCH USE ONLY. NOT FOR USE IN DIAGNOSTIC PROCEDURES"

Our Abpromise to you: Quality guaranteed and expert technical support

- Replacement or refund for products not performing as stated on the datasheet
- Valid for 12 months from date of delivery
- Response to your inquiry within 24 hours

- We provide support in Chinese, English, French, German, Japanese and Spanish
- Extensive multi-media technical resources to help you
- We investigate all quality concerns to ensure our products perform to the highest standards

If the product does not perform as described on this datasheet, we will offer a refund or replacement. For full details of the Abpromise, please visit <https://www.abcam.co.jp/abpromise> or contact our technical team.

Terms and conditions

- Guarantee only valid for products bought direct from Abcam or one of our authorized distributors