


Anti-ROR2 antibody [Nt 2535-2835] ab190145

KO 評価済

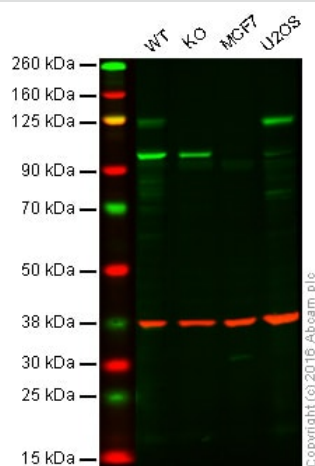
2 References 画像数 3

製品の概要

製品名	Anti-ROR2 antibody [Nt 2535-2835]
製品の詳細	Mouse monoclonal [Nt 2535-2835] to ROR2
由来種	Mouse
アプリケーション	適用あり: WB, IHC-P 適用なし: ICC/IF
種交差性	交差種: Rat, Human 交差が予測される動物種: Mouse 
免疫原	Fusion protein. This information is proprietary to Abcam and/or its suppliers.
ポジティブ・コントロール	IHC-P: FFPE human prostate tissue sections. IHC-P: FFPE Human Stomach
特記事項	<p>This antibody clone is manufactured by Abcam. If you require a custom buffer formulation or conjugation for your experiments, please contact orders@abcam.com.</p> <p>The Life Science industry has been in the grips of a reproducibility crisis for a number of years. Abcam is leading the way in addressing this with our range of recombinant monoclonal antibodies and knockout edited cell lines for gold-standard validation. Please check that this product meets your needs before purchasing.</p> <p>If you have any questions, special requirements or concerns, please send us an inquiry and/or contact our Support team ahead of purchase. Recommended alternatives for this product can be found below, along with publications, customer reviews and Q&As</p>

製品の特性

製品の状態	Liquid
保存方法	Shipped at 4°C. Store at +4°C short term (1-2 weeks). Store at -20°C.
バッファー	pH: 7.40 Preservative: 0.02% Sodium azide Constituent: PBS
	Some batches contain 6.97% L-Arginine as a stabilizing agent. For lot-specific buffer information, please contact our Scientific Support team.



Western blot - Anti-ROR2 antibody [Nt 2535-2835]
(ab190145)

Lane 1: Wild-type HAP1 whole cell lysate (20 µg)

Lane 2: ROR2 knockout HAP1 whole cell lysate (20 µg)

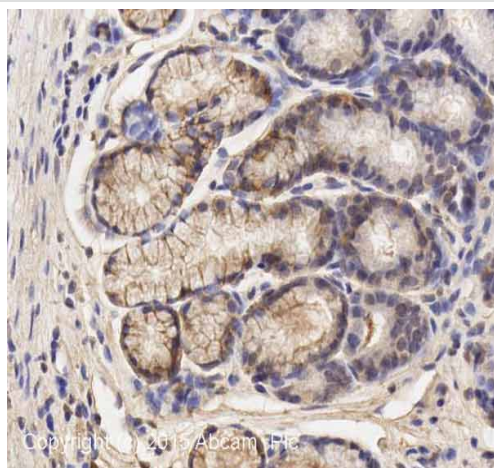
Lane 3: MCF7 whole cell lysate (20 µg)

Lane 4: U2OS whole cell lysate (20 µg)

Lanes 1 - 4: Merged signal (red and green). Green - ab190145 observed at 125 kDa. Red - loading control, **ab181602**, observed at 37 kDa.

ab190145 was shown to recognize ROR2 in wild-type HAP1 cells along with additional cross-reactive bands. No band was observed when ROR2 knockout samples were examined. Wild-type and ROR2 knockout samples were subjected to SDS-PAGE.

Ab190145 and **ab181602** (Rabbit anti GAPDH loading control) were incubated overnight at 4°C at 1 µg/ml and 1/10,000 dilution respectively. Blots were developed with Goat anti-Mouse IgG H&L (IRDye® 800CW) **ab216772** and Goat anti-Rabbit IgG H&L (IRDye® 680RD) **ab216777** secondary antibodies at 1/10,000 dilution for 1 hour at room temperature before imaging.

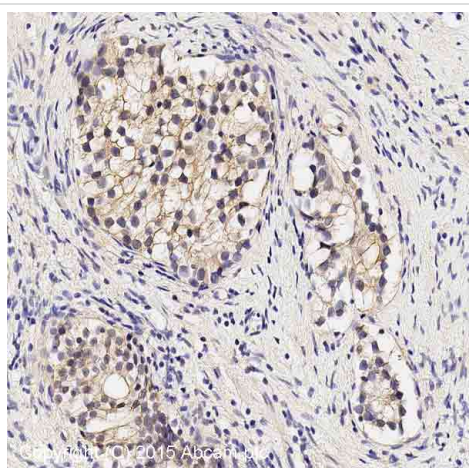


Immunohistochemistry (Formalin/PFA-fixed paraffin-embedded sections) - Anti-ROR2 antibody [Nt 2535-2835] (ab190145)

IHC image of ROR2 staining in Normal Human Stomach formalin fixed paraffin embedded tissue section*, performed on a Leica Bond™ system using the standard protocol F/B. The section was pre-treated using heat mediated antigen retrieval with sodium citrate buffer (pH6, epitope retrieval solution 1) for 20 mins. The section was then incubated with ab190145, 10µg/ml, for 15 mins at room temperature and detected using an HRP conjugated compact polymer system. DAB was used as the chromogen. The section was then counterstained with haematoxylin and mounted with DPX.

For other IHC staining systems (automated and non-automated) customers should optimize variable parameters such as antigen retrieval conditions, primary antibody concentration and antibody incubation times.

*Tissue obtained from the Human Research Tissue Bank, supported by the NIHR Cambridge Biomedical Research Centre



Immunohistochemistry (Formalin/PFA-fixed paraffin-embedded sections) - Anti-ROR2 antibody [Nt 2535-2835] (ab190145)

IHC image of ROR2 staining in Human normal prostate formalin fixed paraffin embedded tissue section*, performed on a Leica Bond™ system using the standard protocol F. The section was pre-treated using heat mediated antigen retrieval with sodium citrate buffer (pH6, epitope retrieval solution 1) for 20 mins. The section was then incubated with ab190145, 10µg/ml, for 15 mins at room temperature and detected using an HRP conjugated compact polymer system. DAB was used as the chromogen. The section was then counterstained with haematoxylin and mounted with DPX.

For other IHC staining systems (automated and non-automated) customers should optimize variable parameters such as antigen retrieval conditions, primary antibody concentration and antibody incubation times.

*Tissue obtained from the Human Research Tissue Bank, supported by the NIHR Cambridge Biomedical Research Centre

Please note: All products are "FOR RESEARCH USE ONLY. NOT FOR USE IN DIAGNOSTIC PROCEDURES"

Our Abpromise to you: Quality guaranteed and expert technical support

- Replacement or refund for products not performing as stated on the datasheet
- Valid for 12 months from date of delivery
- Response to your inquiry within 24 hours
- We provide support in Chinese, English, French, German, Japanese and Spanish
- Extensive multi-media technical resources to help you
- We investigate all quality concerns to ensure our products perform to the highest standards

If the product does not perform as described on this datasheet, we will offer a refund or replacement. For full details of the Abpromise, please visit <https://www.abcam.co.jp/abpromise> or contact our technical team.

Terms and conditions

- Guarantee only valid for products bought direct from Abcam or one of our authorized distributors