

### Anti-Robo2 + Robo3 antibody ab75014

★★★★★ [3 Abreviews](#) [4 References](#) [画像数 2](#)

#### 製品の概要

製品名	Anti-Robo2 + Robo3 antibody
製品の詳細	Rabbit polyclonal to Robo2 + Robo3
由来種	Rabbit
特異性	Ab75014 has been shown to cross react with Robo2 and Robo3, but not Robo1. Robo3 expression is largely restricted to the developing cortex (PMID 30697732).
アプリケーション	<b>適用あり:</b> WB
種交差性	<b>交差種:</b> Mouse, Rat, Human
免疫原	Synthetic peptide corresponding to Mouse Robo2 + Robo3 aa 1250-1350 conjugated to keyhole limpet haemocyanin. (Peptide available as <a href="#">ab75013</a> )
ポジティブ・コントロール	This antibody gave a positive signal in the following tissue lysates: Rat Liver Mouse Liver
特記事項	<p>The Life Science industry has been in the grips of a reproducibility crisis for a number of years. Abcam is leading the way in addressing this with our range of recombinant monoclonal antibodies and knockout edited cell lines for gold-standard validation. Please check that this product meets your needs before purchasing.</p> <p>If you have any questions, special requirements or concerns, please send us an inquiry and/or contact our Support team ahead of purchase. Recommended alternatives for this product can be found below, along with publications, customer reviews and Q&amp;As</p>

#### 製品の特性

製品の状態	Liquid
保存方法	Shipped at 4°C. Store at +4°C short term (1-2 weeks). Upon delivery aliquot. Store at -20°C or -80°C. Avoid freeze / thaw cycle.
バッファー	<p>pH: 7.40</p> <p>Preservative: 0.02% Sodium azide</p> <p>Constituent: PBS</p> <p>Batches of this product that have a concentration &lt; 1mg/ml may have BSA added as a stabilising agent. If you would like information about the formulation of a specific lot, please contact our scientific support team who will be happy to help.</p>

精製度	Immunogen affinity purified
ポリ/モノ	ポリクローナル
アイソタイプ	IgG

## アプリケーション

**The Abpromise guarantee** **Abpromise保証は、次のテスト済みアプリケーションにおけるab75014の使用に適用されます**  
 アプリケーションノートには、推奨の開始希釈率がありますが、適切な希釈率につきましてはご確認ください。

アプリケーション	Abreviews	特記事項
WB	★★★★★ (2)	Use a concentration of 1 - 2 µg/ml. Detects a band of approximately 171 kDa (predicted molecular weight: 161 kDa).

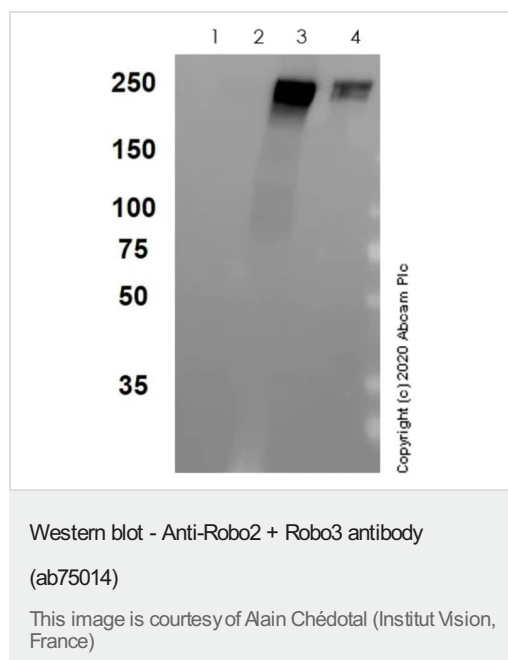
## ターゲット情報

**関連性**

The function of the nervous system depends on the precision of axon wiring during development. SLITs, a family of secreted chemorepellent proteins, are crucial for the proper development of several major forebrain tracts. They act as guidance cues in axonal migration/navigation during neural development, at the ventral midline of the neural tube. ROBO2 (Roundabout, axon guidance receptor, homolog 2) is a receptor for SLIT2, and probably SLIT1 and mediates the function of SLITs. ROBO3 is thought to be involved during neural development in axonal navigation at the ventral midline of the neural tube. In spinal chord development plays a role in guiding commissural axons probably by preventing premature sensitivity to Slit proteins thus inhibiting Slit signaling through ROBO1 (By similarity). Required for hindbrain axon midline crossing.

**細胞内局在** Membrane; Single-pass type I membrane protein.

## 画像



**All lanes** : Anti-Robo2 + Robo3 antibody (ab75014) at 1/500 dilution

**Lane 1** : Un-transfected HEK293

**Lane 2** : HEK293 cells expressing Robo 1

**Lane 3** : HEK293 cells expressing Robo 2

**Lane 4** : HEK293 cells expressing Robo 3

Lysates/proteins at 10 µg per lane.

### Secondary

**All lanes** : Goat anti-rabbit HRP

Developed using the ECL technique.

Performed under reducing conditions.

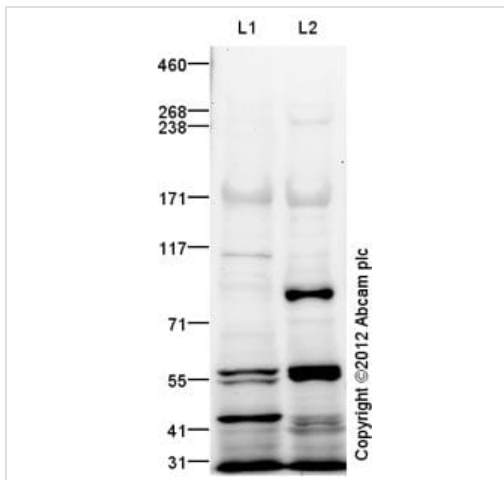
**Predicted band size:** 161 kDa

**Observed band size:** 250 kDa

**Exposure time:** 10 seconds

Blocking: 2.5% Milk block for 1 hour at 20°C

Secondary incubation: TBS +2.5% Milk block for 16 hours at 4°C



Western blot - Anti-Robo2 + Robo3 antibody  
(ab75014)

**All lanes :** Anti-Robo2 + Robo3 antibody (ab75014) at 1 µg/ml

**Lane 1 :** Liver (Rat) Tissue Lysate

**Lane 2 :** Liver (Mouse) Tissue Lysate

Lysates/proteins at 20 µg per lane.

#### **Secondary**

**All lanes :** Goat Anti-Rabbit IgG H&L (HRP) ([ab97051](#)) at 1/10000 dilution

Developed using the ECL technique.

Performed under reducing conditions.

**Predicted band size:** 161 kDa

**Exposure time:** 20 minutes

**Please note:** All products are "FOR RESEARCH USE ONLY. NOT FOR USE IN DIAGNOSTIC PROCEDURES"

#### **Our Promise to you: Quality guaranteed and expert technical support**

- Replacement or refund for products not performing as stated on the datasheet
- Valid for 12 months from date of delivery
- Response to your inquiry within 24 hours
- We provide support in Chinese, English, French, German, Japanese and Spanish
- Extensive multi-media technical resources to help you
- We investigate all quality concerns to ensure our products perform to the highest standards

If the product does not perform as described on this datasheet, we will offer a refund or replacement. For full details of the Abpromise, please visit <https://www.abcam.co.jp/abpromise> or contact our technical team.

#### **Terms and conditions**

---

- Guarantee only valid for products bought direct from Abcam or one of our authorized distributors