

Anti-Robo1 antibody ab85312

★★★★★ [3 Abreviews](#) [5 References](#) [画像数 1](#)

製品の概要

製品名	Anti-Robo1 antibody
製品の詳細	Rabbit polyclonal to Robo1
由来種	Rabbit
アプリケーション	適用あり: WB 適用なし: ICC/IF
種交差性	交差種: Mouse, Human
免疫原	Synthetic peptide corresponding to Human Robo1 aa 1600 to the C-terminus conjugated to keyhole limpet haemocyanin. (Peptide available as ab94835)
ポジティブ・コントロール	WB: Human brain; Mouse brain lysates
特記事項	<p>The Life Science industry has been in the grips of a reproducibility crisis for a number of years. Abcam is leading the way in addressing this with our range of recombinant monoclonal antibodies and knockout edited cell lines for gold-standard validation. Please check that this product meets your needs before purchasing.</p> <p>If you have any questions, special requirements or concerns, please send us an inquiry and/or contact our Support team ahead of purchase. Recommended alternatives for this product can be found below, along with publications, customer reviews and Q&As</p>

製品の特性

製品の状態	Liquid
保存方法	Shipped at 4°C. Store at +4°C short term (1-2 weeks). Upon delivery aliquot. Store at -20°C or -80°C. Avoid freeze / thaw cycle.
バッファー	pH: 7.40 Preservative: 0.02% Sodium azide Constituent: PBS
精製度	Batches of this product that have a concentration < 1mg/ml may have BSA added as a stabilising agent. If you would like information about the formulation of a specific lot, please contact our scientific support team who will be happy to help. Immunogen affinity purified

ポリモノ
アイソタイプ

ポリクローナル
IgG

アプリケーション

The Abpromise guarantee **Abpromise保証は、** 次のテスト済みアプリケーションにおけるab85312の使用に適用されます
アプリケーションノートには、推奨の開始希釈率がありますが、適切な希釈率につきましてはご検討ください。

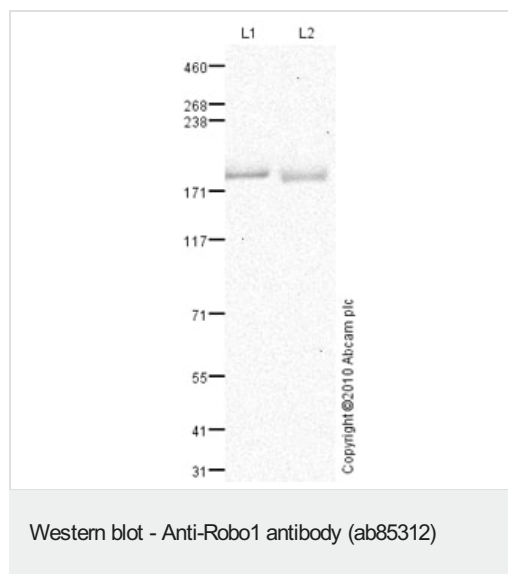
アプリケーション	Abreviews	特記事項
WB	★★★★☆ (2)	Use a concentration of 1 µg/ml. Detects a band of approximately 190 kDa (predicted molecular weight: 180 kDa).

追加情報 Is unsuitable for ICC/IF.

ターゲット情報

機能	Receptor for SLIT1 and SLIT2 which are thought to act as molecular guidance cue in cellular migration, including axonal navigation at the ventral midline of the neural tube and projection of axons to different regions during neuronal development. In axon growth cones, the silencing of the attractive effect of NTN1 by SLIT2 may require the formation of a ROBO1-DCC complex. May be required for lung development.
組織特異性	Widely expressed, with exception of kidney.
配列類似性	Belongs to the immunoglobulin superfamily. ROBO family. Contains 3 fibronectin type-III domains. Contains 5 Ig-like C2-type (immunoglobulin-like) domains.
翻訳後修飾	Ubiquitinated. May be deubiquitinated by USP33.
細胞内局在	Membrane.

画像



All lanes : Anti-Robo1 antibody (ab85312) at 1 µg/ml

Lane 1 : Human brain tissue lysate - total protein ([ab29466](#))

Lane 2 : Brain (Mouse) Tissue Lysate

Lysates/proteins at 10 µg per lane.

Secondary

All lanes : Goat polyclonal to Rabbit IgG - H&L - Pre-Adsorbed (HRP) at 1/3000 dilution

Developed using the ECL technique.

Performed under reducing conditions.

Predicted band size: 180 kDa

Observed band size: 190 kDa

Exposure time: 20 minutes

Human Roundabout homolog 1 precursor contains a number of potential glycosylation sites (SwissProt) which may explain its migration at a higher molecular weight than predicted.

Please note: All products are "FOR RESEARCH USE ONLY. NOT FOR USE IN DIAGNOSTIC PROCEDURES"

Our Abpromise to you: Quality guaranteed and expert technical support

- Replacement or refund for products not performing as stated on the datasheet
- Valid for 12 months from date of delivery
- Response to your inquiry within 24 hours
- We provide support in Chinese, English, French, German, Japanese and Spanish
- Extensive multi-media technical resources to help you
- We investigate all quality concerns to ensure our products perform to the highest standards

If the product does not perform as described on this datasheet, we will offer a refund or replacement. For full details of the Abpromise, please visit <https://www.abcam.co.jp/abpromise> or contact our technical team.

Terms and conditions

- Guarantee only valid for products bought direct from Abcam or one of our authorized distributors