

### Anti-RNF8 antibody ab15850

★★★★★ [2 Abreviews](#) [2 References](#) [画像数 2](#)

#### 製品の概要

|          |   |
|----------|---|
| 製品名      | Anti-RNF8 antibody  |
| 製品の詳細    | Goat polyclonal to RNF8   |
| 由来種      | Goat  |
| アプリケーション | <b>適用あり:</b> WB   |
| 種交差性     | <b>交差種:</b> Human   |
| 免疫原      | Synthetic peptide:<br>GEPGFFVTGDRAG-C<br>, corresponding to N terminal amino acids 2-14 of Human RNF8. (Peptide available as <a href="#">ab23278</a> .) |

 [Run BLAST with](#)

 [Run BLAST with](#)

#### 特記事項

The Life Science industry has been in the grips of a reproducibility crisis for a number of years. Abcam is leading the way in addressing this with our range of recombinant monoclonal antibodies and knockout edited cell lines for gold-standard validation. Please check that this product meets your needs before purchasing.

If you have any questions, special requirements or concerns, please send us an inquiry and/or contact our Support team ahead of purchase. Recommended alternatives for this product can be found below, along with publications, customer reviews and Q&As

#### 製品の特性

|        |  |
|--------|--|
| 製品の状態  | Liquid   |
| 保存方法   | Shipped at 4°C. Upon delivery aliquot and store at -20°C. Avoid freeze / thaw cycles.              |
| バッファー  | pH: 7.30<br>Preservative: 0.02% Sodium azide<br>Constituents: 0.05% Tris buffered saline, 0.5% BSA |
| 精製度    | Immunogen affinity purified  |
| ポリモノ   | ポリクローナル  |
| アイソタイプ | IgG  |

#### アプリケーション

## The Abpromise guarantee

**Abpromise保証は、次のテスト済みアプリケーションにおけるab15850の使用に適用されます**

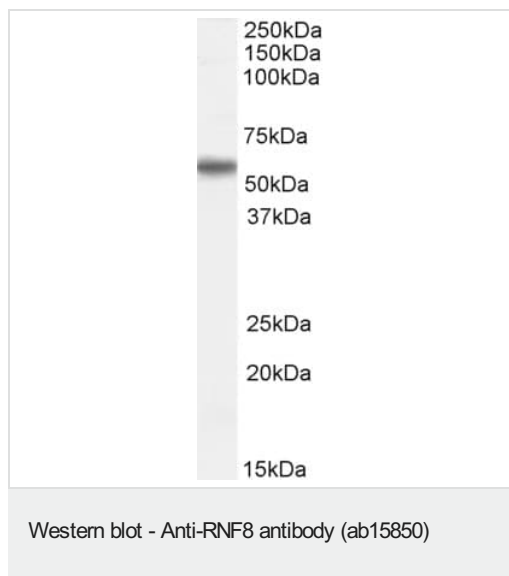
アプリケーションノートには、推奨の開始希釈率がありますが、適切な希釈率につきましてはご検討ください。

| アプリケーション | Abreviews | 特記事項  |
|----------|-----------|---|
| WB       | ★★★★★ (1) | Use a concentration of 0.1 - 1 µg/ml. Detects a band of approximately 55 kDa (predicted molecular weight: 56 kDa). A 1 hour primary incubation is recommended for this product. |

## ターゲット情報

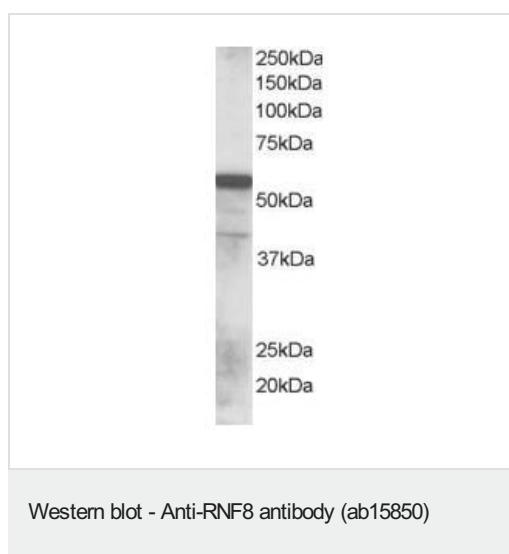
|       |  |
|-------|--|
| 機能    | E3 ubiquitin-protein ligase required for assembly of repair proteins to sites of DNA damage. Catalyzes the 'Lys-63'-linked ubiquitination of histone H2A and H2AX. Following DNA double-strand breaks (DSBs), it is recruited to the sites of damage by ATM-phosphorylated MDC1, mediates the ubiquitination of histones H2A and H2AX, thereby promoting the formation of TP53BP1 and BRCA1 ionizing radiation-induced foci (IRIF). Promotes the formation of 'Lys-63'-linked polyubiquitin chains and functions with the specific ubiquitin-conjugating UBE2N/UBC13. Substrates that are polyubiquitinated at 'Lys-63' are usually not targeted for degradation. Enforces the G2/M DNA damage checkpoint. Controls the recruitment of UIMC1-BRCC3 (RAP80-BRCC36) and PAXIP1/PTIP to DNA damage sites following DNA double-strand breaks (DSBs). Ubiquitination of histone H2A requires UBE2N but not MMS2 (UBE2V2). May also ubiquitinate histone H2B. Catalyzes the 'Lys-63'-linked ubiquitination of PCNA. May be required for proper exit from mitosis after spindle checkpoint activation and may regulate cytokinesis. May play a role in the regulation of RXRA-mediated transcriptional activity. Not involved in RXRA ubiquitination by UBE2E2. |
| 組織特異性 | Ubiquitous. In fetal tissues, highest expression in brain, thymus and liver. In adult tissues, highest levels in brain and testis, lowest levels in peripheral blood cells.  |
| パスウェイ | Protein modification; protein ubiquitination.  |
| 配列類似性 | Belongs to the RNF8 family.<br>Contains 1 FHA domain.<br>Contains 1 RING-type zinc finger.   |
| 発生段階  | Low levels at the G1-S boundary increase in intensity during S phase and until the end of the G2 phase. Abruptly decreases in late mitosis (at protein level). Barely detectable in anaphase.  |
| ドメイン  | The FHA domain specifically recognizes and binds ATM-phosphorylated MDC1 and Thr-4827 phosphorylated HERC2.  |
| 翻訳後修飾 | Autoubiquitinated through 'Lys-48' and 'Lys-63' of ubiquitin. 'Lys-63' polyubiquitination is mediated by UBE2N. 'Lys-29'-type polyubiquitination is also observed, but it doesn't require its own functional RING-type zinc finger.  |
| 細胞内局在 | Nucleus. Midbody. Following DNA double-strand breaks, recruited to the sites of damage. During prophase, concomitant with nuclear envelope breakdown, localizes throughout the cell, with a dotted pattern. In telophase, again in the nucleus and also with a discrete dotted pattern in the cytoplasm. In late telophase and during cytokinesis, localizes in the midbody of the tubulin bridge joining the daughter cells. Does not seem to be associated with condensed chromosomes at any time during the cell cycle.   |

## 画像



Anti-RNF8 antibody (ab15850) at 0.1 µg/ml + Human placenta lysate at 35 µg

**Predicted band size:** 56 kDa



Anti-RNF8 antibody (ab15850) at 0.1 µg/ml + Lysates prepared from human lung tissues at 35 µg

**Predicted band size:** 56 kDa

ab15850 staining human RNF8 at 0.1 µg/ml in lung lysate (35 µg ) by Western blot (chemiluminescence).

**Please note:** All products are "FOR RESEARCH USE ONLY. NOT FOR USE IN DIAGNOSTIC PROCEDURES"

### Our Abpromise to you: Quality guaranteed and expert technical support

- Replacement or refund for products not performing as stated on the datasheet
- Valid for 12 months from date of delivery
- Response to your inquiry within 24 hours
- We provide support in Chinese, English, French, German, Japanese and Spanish
- Extensive multi-media technical resources to help you
- We investigate all quality concerns to ensure our products perform to the highest standards

If the product does not perform as described on this datasheet, we will offer a refund or replacement. For full details of the Abpromise, please visit <https://www.abcam.co.jp/abpromise> or contact our technical team.

### Terms and conditions

- Guarantee only valid for products bought direct from Abcam or one of our authorized distributors