

Anti-RNA polymerase II RPB1 antibody [EPR1509Y] - ChIP Grade ab76123

リコンビナント RabMAb

14 References **画像数 3**

製品の概要

製品名	Anti-RNA polymerase II RPB1 antibody [EPR1509Y] - ChIP Grade
製品の詳細	Rabbit monoclonal [EPR1509Y] to RNA polymerase II RPB1 - ChIP Grade
由来種	Rabbit
アプリケーション	適用あり: WB, ChIP 適用なし: Flow Cyt, ICC/IF, IHC-P or IP
種交差性	交差種: Human
免疫原	Synthetic peptide within Human RNA polymerase II RPB1 aa 100-200 (N terminal). The exact sequence is proprietary.
ポジティブ・コントロール	HeLa whole cell lysate (ab150035).
特記事項	<p>This product is a recombinant monoclonal antibody, which offers several advantages including:</p> <ul style="list-style-type: none">- High batch-to-batch consistency and reproducibility- Improved sensitivity and specificity- Long-term security of supply- Animal-free production <p>For more information see here.</p> <p>Our RabMAb[®] technology is a patented hybridoma-based technology for making rabbit monoclonal antibodies. For details on our patents, please refer to RabMAb[®] patents.</p> <p>Mouse, Rat: We have preliminary internal testing data to indicate this antibody may not react with these species. Please contact us for more information.</p>

製品の特性

製品の状態	Liquid
保存方法	Shipped at 4°C. Store at -20°C. Stable for 12 months at -20°C.
バッファー	pH: 7.20 Preservative: 0.01% Sodium azide Constituents: 59% PBS, 40% Glycerol (glycerin, glycerine), 0.5% BSA
精製度	Protein A purified

ポリクローナル	モノクローナル
クローン名	EPR1509Y
アイソタイプ	IgG

アプリケーション

The Abpromise guarantee **Abpromise保証は、次のテスト済みアプリケーションにおけるab76123の使用に適用されます**
 アプリケーションノートには、推奨の開始希釈率がありますが、適切な希釈率につきましてはご検討ください。

アプリケーション	Abreviews	特記事項
WB		1/500 - 1/1000. Detects a band of approximately 270 kDa (predicted molecular weight: 217 kDa).
ChIP		Use at an assay dependent concentration.

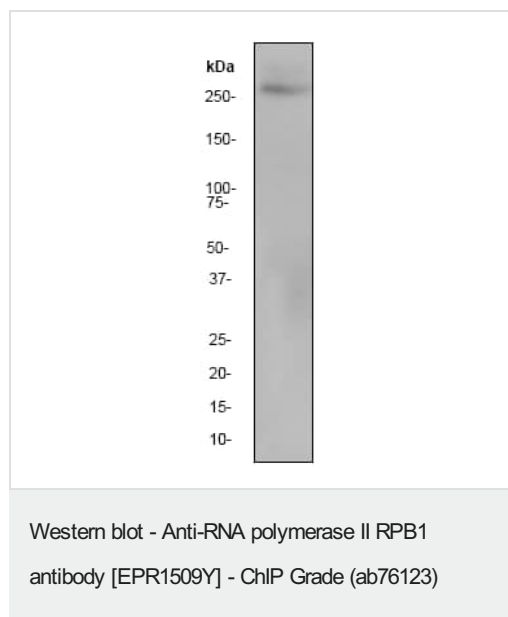
追加情報 Is unsuitable for Flow Cyt, ICC/IF, IHC-P or IP.

ターゲット情報

関連性 RPB1 is a subunit of RNA polymerase II which catalyses transcription of RNA from DNA. RPB1 forms the polymerase active center together with the second largest subunit. Pol II is the central component of the basal RNA polymerase II transcription machinery. It is composed of mobile elements that move relative to each other. RPB1 is part of the core element with the central large cleft, the clamp element that moves to open and close the cleft and the jaws that are thought to grab the incoming DNA template.

細胞内局在 Nuclear

画像



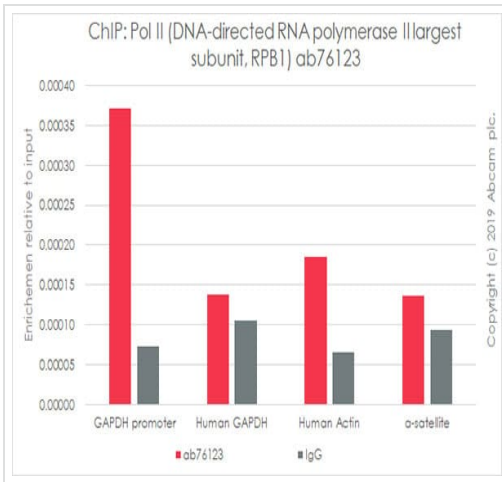
Anti-RNA polymerase II RPB1 antibody [EPR1509Y] - ChIP Grade (ab76123) at 1/2000 dilution + HeLa cell lysate at 10 µg

Secondary

Goat anti-rabbit HRP at 1/2000 dilution

Predicted band size: 217 kDa

Observed band size: 270 kDa



ChIP - Anti-RNA polymerase II RPB1 antibody
[EPR1509Y] - ChIP Grade (ab76123)

Chromatin was prepared from 293T cells according to the Abcam Dual-X-ChIP protocol*. Cells were fixed with 1.5 mM EGS for 30mins and then formaldehyde for 10min.

The ChIP was performed with 25 µg of chromatin, 5 µg of ab76123 (red), or 5 µg of rabbit normal IgG **ab172730** (gray) and 20 µl of Protein A/G sepharose beads. The immunoprecipitated DNA was quantified by real time PCR (Taqman approach for active and inactive loci, Sybr green approach for heterochromatic loci).

Primers and probes are commercial primers from Paper

*[http://www.abcam.com/resources?](http://www.abcam.com/resources?keywords=X%20ChIP%20protocol)

keywords=X%20ChIP%20protocol

Why choose a recombinant antibody?

Research with confidence
Consistent and reproducible results

Long-term and scalable supply
Recombinant technology

Success from the first experiment
Confirmed specificity

Ethical standards compliant
Animal-free production

Anti-RNA polymerase II RPB1 antibody [EPR1509Y]
- ChIP Grade (ab76123)

Please note: All products are "FOR RESEARCH USE ONLY. NOT FOR USE IN DIAGNOSTIC PROCEDURES"

Our Abpromise to you: Quality guaranteed and expert technical support

- Replacement or refund for products not performing as stated on the datasheet
- Valid for 12 months from date of delivery
- Response to your inquiry within 24 hours
- We provide support in Chinese, English, French, German, Japanese and Spanish
- Extensive multi-media technical resources to help you
- We investigate all quality concerns to ensure our products perform to the highest standards

If the product does not perform as described on this datasheet, we will offer a refund or replacement. For full details of the Abpromise, please visit <https://www.abcam.co.jp/abpromise> or contact our technical team.

Terms and conditions

- Guarantee only valid for products bought direct from Abcam or one of our authorized distributors