


### Anti-RNA Helicase A antibody ab26271

★★★★★ [9 Abreviews](#) [48 References](#) [画像数 3](#)

#### 製品の概要

製品名	Anti-RNA Helicase A antibody
製品の詳細	Rabbit polyclonal to RNA Helicase A
由来種	Rabbit
アプリケーション	<b>適用あり:</b> WB
種交差性	<b>交差種:</b> Mouse, Human <b>交差が予測される動物種:</b> Cow, Monkey, African green monkey 
免疫原	Synthetic peptide corresponding to Human RNA Helicase A aa 100-200 conjugated to Keyhole Limpet Haemocyanin (KLH). Database link: <a href="#">Q08211</a> (Peptide available as <a href="#">ab27786</a> )
特記事項	<p>The Life Science industry has been in the grips of a reproducibility crisis for a number of years. Abcam is leading the way in addressing this with our range of recombinant monoclonal antibodies and knockout edited cell lines for gold-standard validation. Please check that this product meets your needs before purchasing.</p> <p>If you have any questions, special requirements or concerns, please send us an inquiry and/or contact our Support team ahead of purchase. Recommended alternatives for this product can be found below, along with publications, customer reviews and Q&amp;As</p>

#### 製品の特性

製品の状態	Liquid
保存方法	Shipped at 4°C. Store at +4°C short term (1-2 weeks). Upon delivery aliquot. Store at -20°C or -80°C. Avoid freeze / thaw cycle.
バッファー	pH: 7.40 Preservative: 0.02% Sodium azide Constituent: PBS  Batches of this product that have a concentration < 1mg/ml may have BSA added as a stabilising agent. If you would like information about the formulation of a specific lot, please contact our scientific support team who will be happy to help.
精製度	Immunogen affinity purified

ポリ/モノ  
アイソタイプ

ポリクローナル  
IgG

## アプリケーション

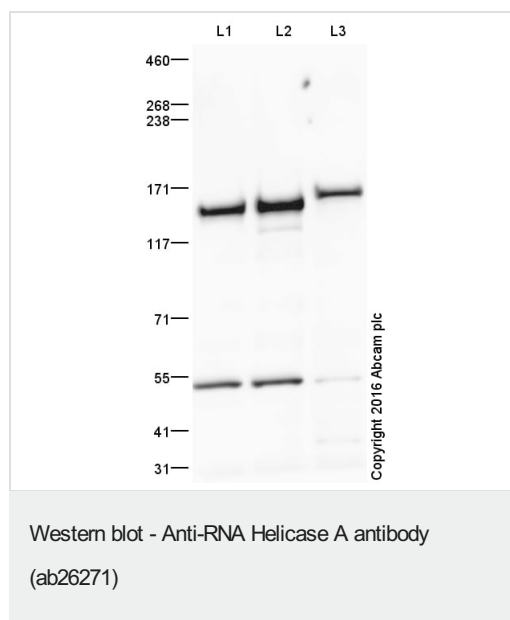
**The Abpromise guarantee**      **Abpromise保証は、** 次のテスト済みアプリケーションにおけるab26271の使用に適用されます  
アプリケーションノートには、推奨の開始希釈率がありますが、適切な希釈率につきましてはご確認ください。

アプリケーション	Abreviews	特記事項
WB	★★★★★ (5)	Use a concentration of 1 µg/ml. Detects a band of approximately 141,149 kDa (predicted molecular weight: 141 kDa). This antibody detects a band at 141 kDa in human cell lysates and 149 kDa in mouse cell lysates.

## ターゲット情報

機能	Unwinds double-stranded DNA and RNA in a 3' to 5' direction. Alteration of secondary structure may subsequently influence interactions with proteins or other nucleic acids. Functions as a transcriptional activator. Component of the CRD-mediated complex that promotes MYC mRNA stability.
配列類似性	Belongs to the DEAD box helicase family. DEAH subfamily. Contains 2 DRBM (double-stranded RNA-binding) domains. Contains 1 helicase ATP-binding domain. Contains 1 helicase C-terminal domain.
ドメイン	The MTAD domain mediates interaction with the RNA polymerase II holoenzyme. The NTD domain is necessary and sufficient for nucleo-cytoplasmic shuttling and interaction with HRMT1L2 and SMN1.
翻訳後修飾	Methylated. HRMT1L2 mediated methylation of undefined Arg residues in the NTD is required for nuclear localization. May be phosphorylated by PRKDC/XRCC7. Phosphorylated upon DNA damage, probably by ATM or ATR.
細胞内局在	Nucleus > nucleolus. Cytoplasm. Localized in cytoplasmic mRNP granules containing untranslated mRNAs. Can shuttle between nucleus and cytoplasm.

## 画像



**All lanes :** Anti-RNA Helicase A antibody (ab26271) at 1 µg/ml

**Lane 1 :** HeLa (Human epithelial carcinoma cell line) Whole Cell Lysate

**Lane 2 :** HEK293 (Human) Whole Cell Lysate

**Lane 3 :** NIH 3T3 (Mouse) Whole Cell Lysate

Lysates/proteins at 20 µg per lane.

### Secondary

**All lanes :** Goat Anti-Rabbit IgG H&L (HRP) preadsorbed at 1/50000 dilution

Developed using the ECL technique.

Performed under reducing conditions.

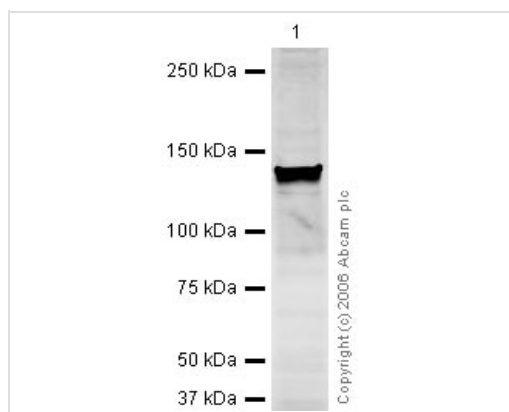
**Predicted band size:** 141 kDa

**Observed band size:** 141,149 kDa

**Additional bands at:** 50 kDa. We are unsure as to the identity of these extra bands.

**Exposure time:** 4 minutes

This blot was produced using a 3-8% Tris Acetate gel under the TA buffer system. The gel was run at 150V for 60 minutes before being transferred onto a Nitrocellulose membrane at 30V for 70 minutes. The membrane was then blocked for an hour using 2% Bovine Serum Albumin before being incubated with ab26271 overnight at 4°C. Antibody binding was detected using an anti-rabbit antibody conjugated to HRP, and visualised using ECL development solution **ab133406**.



Western blot - Anti-RNA Helicase A antibody  
(ab26271)

Anti-RNA Helicase A antibody (ab26271) at 1 µg/ml + HeLa  
(Human epithelial carcinoma cell line) Whole Cell Lysate at 20 µg

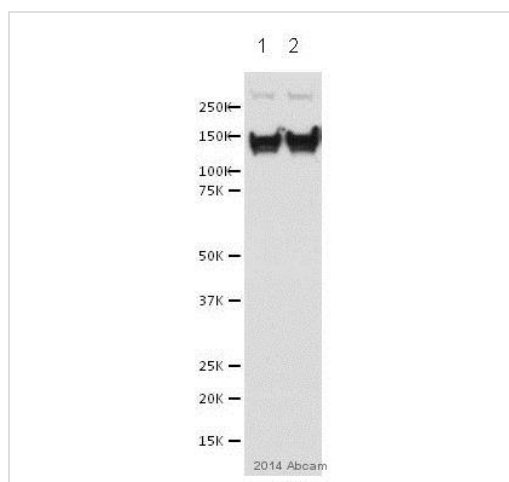
#### Secondary

Goat polyclonal to Rabbit IgG (Alexa Fluor® 680) at 1/10000  
dilution

Performed under reducing conditions.

**Predicted band size:** 141 kDa

**Observed band size:** 141 kDa



Western blot - Anti-RNA Helicase A antibody  
(ab26271)

This image is courtesy of an Abreview submitted by Mr.  
Miguel Fidalgo.

**All lanes :** Anti-RNA Helicase A antibody (ab26271) at 1/1000  
dilution

**All lanes :** Human embryonic stem cell nuclear lysate

Lysates/proteins at 50 µg per lane.

#### Secondary

**All lanes :** Donkey anti-Rabbit HRP IgG at 1/10000 dilution

Developed using the ECL technique.

**Predicted band size:** 141 kDa

**Exposure time:** 30 seconds

**Please note:** All products are "FOR RESEARCH USE ONLY. NOT FOR USE IN DIAGNOSTIC PROCEDURES"

### Our Abpromise to you: Quality guaranteed and expert technical support

- Replacement or refund for products not performing as stated on the datasheet
- Valid for 12 months from date of delivery
- Response to your inquiry within 24 hours
- We provide support in Chinese, English, French, German, Japanese and Spanish
- Extensive multi-media technical resources to help you
- We investigate all quality concerns to ensure our products perform to the highest standards

If the product does not perform as described on this datasheet, we will offer a refund or replacement. For full details of the Abpromise,

please visit <https://www.abcam.co.jp/abpromise> or contact our technical team.

#### **Terms and conditions**

---

- Guarantee only valid for products bought direct from Abcam or one of our authorized distributors