


Anti-RLF antibody ab115154

画像数 2

製品の概要

製品名	Anti-RLF antibody
製品の詳細	Rabbit polyclonal to RLF
由来種	Rabbit
アプリケーション	適用あり: WB, IP
種交差性	交差種: Human 交差が予測される動物種: Mouse, Rat, Rabbit, Guinea pig, Cow, Dog, Pig, Chimpanzee, Rhesus monkey, Gorilla, Orangutan 
免疫原	Synthetic peptide, corresponding to a region within amino acids 500-550 of Human RLF (Q13129).
ポジティブ・コントロール	HeLa and 293T cell lysates.
特記事項	<p>The Life Science industry has been in the grips of a reproducibility crisis for a number of years. Abcam is leading the way in addressing this with our range of recombinant monoclonal antibodies and knockout edited cell lines for gold-standard validation. Please check that this product meets your needs before purchasing.</p> <p>If you have any questions, special requirements or concerns, please send us an inquiry and/or contact our Support team ahead of purchase. Recommended alternatives for this product can be found below, along with publications, customer reviews and Q&As</p>

製品の特性

製品の状態	Liquid
保存方法	Shipped at 4°C. Upon delivery aliquot and store at -20°C. Avoid freeze / thaw cycles.
バッファー	pH: 7 Preservative: 0.09% Sodium azide Constituent: 99% Tris citrate/phosphate
精製度	pH 7 to 8 Immunogen affinity purified
ポリ/モノ	ポリクローナル
アイソタイプ	IgG

アプリケーション

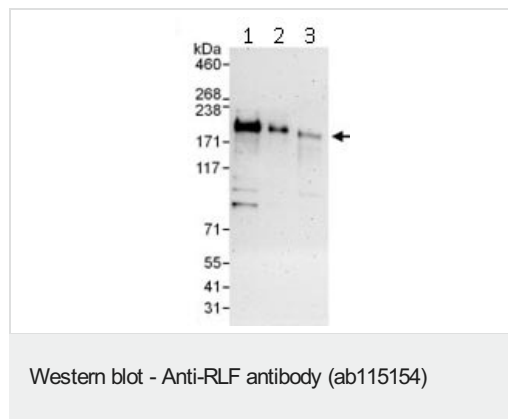
The Abpromise guarantee Abpromise保証は、次のテスト済みアプリケーションにおけるab115154の使用に適用されます
アプリケーションノートには、推奨の開始希釈率がありますが、適切な希釈率につきましてはご検討ください。

アプリケーション	Abreviews	特記事項
WB		1/2000 - 1/10000. Predicted molecular weight: 218 kDa.
IP		Use at 2-10 µg/mg of lysate.

ターゲット情報

機能	May be involved in transcriptional regulation.
組織特異性	Widely expressed in fetal and adult tissues.
配列類似性	Belongs to the krueppel C2H2-type zinc-finger protein family. Contains 14 C2H2-type zinc fingers.
細胞内局在	Nucleus.

画像



All lanes : Anti-RLF antibody (ab115154) at 0.1 µg/ml

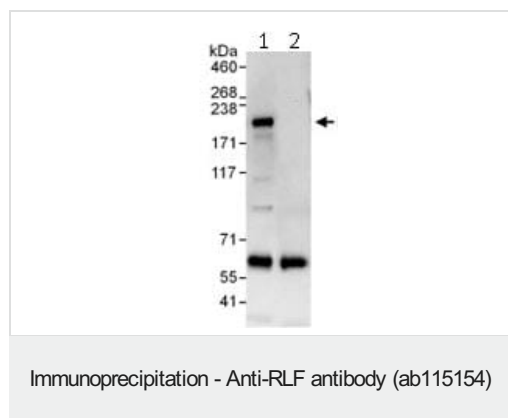
Lane 1 : HeLa cell lysate at 50 µg

Lane 2 : HeLa cell lysate at 15 µg

Lane 3 : 293T cell lysate at 50 µg

Predicted band size: 218 kDa

Exposure time: 3 minutes



Immunoprecipitation of RLF (6 µg of antibody per mg of HeLa cell lysate; 20% of the IP loaded). Lane 1- Immunoprecipitation with an anti-RLF antibody (ab115154); Lane 2- Immunoprecipitation with IgG control. Anti-RLF antibody (ab115154) used at 1 µg/ml for western blot. Detection: Chemiluminescence with exposure time of 10 sec.

Please note: All products are "FOR RESEARCH USE ONLY. NOT FOR USE IN DIAGNOSTIC PROCEDURES"

Our Abpromise to you: Quality guaranteed and expert technical support

- Replacement or refund for products not performing as stated on the datasheet
- Valid for 12 months from date of delivery
- Response to your inquiry within 24 hours

- We provide support in Chinese, English, French, German, Japanese and Spanish
- Extensive multi-media technical resources to help you
- We investigate all quality concerns to ensure our products perform to the highest standards

If the product does not perform as described on this datasheet, we will offer a refund or replacement. For full details of the Abpromise, please visit <https://www.abcam.co.jp/abpromise> or contact our technical team.

Terms and conditions

- Guarantee only valid for products bought direct from Abcam or one of our authorized distributors