

Anti-RIP3 antibody ab62344

★★★★★ [5 Abreviews](#) [40 References](#) [画像数 2](#)

製品の概要

製品名	Anti-RIP3 antibody
製品の詳細	Rabbit polyclonal to RIP3
由来種	Rabbit
アプリケーション	適用あり: WB, IHC-P
種交差性	交差種: Mouse
免疫原	Synthetic peptide corresponding to Mouse RIP3 (C terminal). Database link: Q9Z2P5
ポジティブ・コントロール	WB: Mouse C2C12 cell lysate. IHC-P: Mouse kidney tissue.
特記事項	<p>The Life Science industry has been in the grips of a reproducibility crisis for a number of years. Abcam is leading the way in addressing this with our range of recombinant monoclonal antibodies and knockout edited cell lines for gold-standard validation. Please check that this product meets your needs before purchasing.</p> <p>If you have any questions, special requirements or concerns, please send us an inquiry and/or contact our Support team ahead of purchase. Recommended alternatives for this product can be found below, along with publications, customer reviews and Q&As</p>

製品の特性

製品の状態	Liquid
保存方法	Shipped at 4°C. Store at +4°C short term (1-2 weeks). Store at +4°C.
バッファー	pH: 7.2 Preservative: 0.02% Sodium azide Constituent: PBS
精製度	Immunogen affinity purified
ポリモノ	ポリクローナル
アイソタイプ	IgG

アプリケーション

The Abpromise guarantee

Abpromise保証は、次のテスト済みアプリケーションにおけるab62344の使用に適用されます

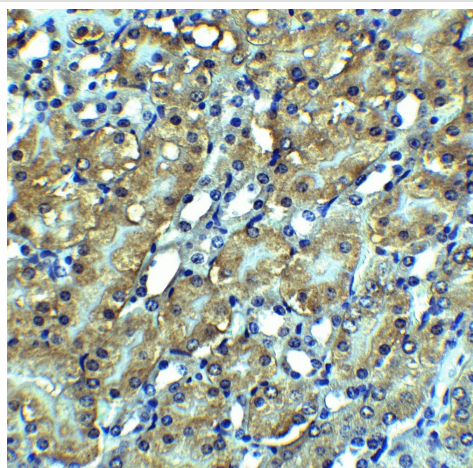
アプリケーションノートには、推奨の開始希釈率がありますが、適切な希釈率につきましてはご確認ください。

アプリケーション	Abreviews	特記事項
WB		Use a concentration of 1 µg/ml. Detects a band of approximately 57 kDa (predicted molecular weight: 57 kDa). Primary antibody incubation: 1h incubation at Room Temperature in 5% NFDm/TBST. Observed: 53kD for mouse RIP3
IHC-P	★★★★★ (1)	Use a concentration of 5 µg/ml.

ターゲット情報

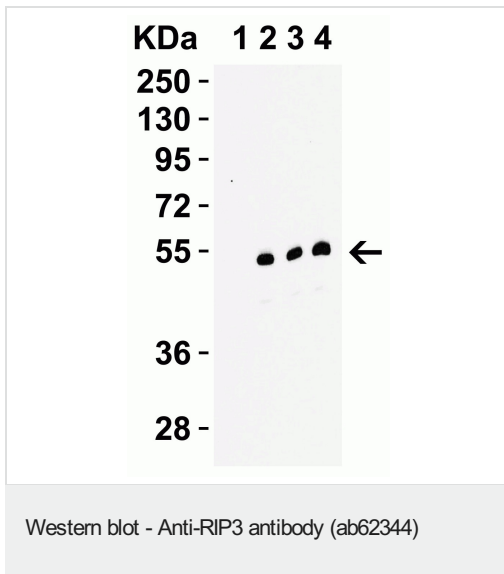
機能	Promotes apoptosis.
組織特異性	Detected at lower levels in heart, placenta, lung and kidney. Isoform 3 is significantly increased in colon and lung cancers.
配列類似性	Belongs to the protein kinase superfamily. TKL Ser/Thr protein kinase family. Contains 1 protein kinase domain.
翻訳後修飾	Autophosphorylated.
細胞内局在	Cytoplasm.

画像



Immunohistochemical analysis of paraffin-embedded mouse kidney tissue with ab62344 at 2.5 µg/mL. Sections were fixed with formaldehyde and blocked with 10% serum for 1 h at RT; antigen retrieval was by heat mediation with a citrate buffer (pH 6.0). Samples were incubated with primary antibody overnight at 4°C. A goat anti-rabbit IgG H&L (HRP) at 1/250 was used as secondary. Counter stained with Hematoxylin.

Immunohistochemistry (Formalin/PFA-fixed paraffin-embedded sections) - Anti-RIP3 antibody (ab62344)



Lanes 1-2 : Anti-RIP3 antibody (ab62344) at 0.1 µg/ml

Lane 3 : Anti-RIP3 antibody (ab62344) at 0.2 µg/ml

Lane 4 : Anti-RIP3 antibody (ab62344) at 0.5 µg/ml

Lane 1 : C2C12 (mouse myoblast cell line) cell lysate with Peptide blocking

Lanes 2-4 : C2C12 (mouse myoblast cell line) cell lysate

Lysates/proteins at 15 µg per lane.

Secondary

All lanes : Goat anti-rabbit IgG HRP conjugate at 1/10000 dilution

Predicted band size: 57 kDa

Primary antibody incubation: 1h incubation at Room Temperature in 5% NFDM/TBST.

Please note: All products are "FOR RESEARCH USE ONLY. NOT FOR USE IN DIAGNOSTIC PROCEDURES"

Our Abpromise to you: Quality guaranteed and expert technical support

- Replacement or refund for products not performing as stated on the datasheet
- Valid for 12 months from date of delivery
- Response to your inquiry within 24 hours
- We provide support in Chinese, English, French, German, Japanese and Spanish
- Extensive multi-media technical resources to help you
- We investigate all quality concerns to ensure our products perform to the highest standards

If the product does not perform as described on this datasheet, we will offer a refund or replacement. For full details of the Abpromise, please visit <https://www.abcam.co.jp/abpromise> or contact our technical team.

Terms and conditions

- Guarantee only valid for products bought direct from Abcam or one of our authorized distributors