

# Anti-RIP2 antibody ab8428

**8 References** [画像数 5](#)

### 製品の概要

---

製品名	Anti-RIP2 antibody
製品の詳細	Rabbit polyclonal to RIP2
由来種	Rabbit
アプリケーション	<b>適用あり:</b> WB, ICC/IF
種交差性	<b>交差種:</b> Mouse, Human
免疫原	Synthetic peptide: PTIPYHKLADLRYLSRGASG , corresponding to amino acids 11/30 of Human RIP2. (Peptide available as <a href="#">ab8463</a> .) <a href="#">Run BLAST with</a> <a href="#">Run BLAST with</a>

**ポジティブ・コントロール** A431 or K562 whole cell lysate An approximately 60 kDa band can be detected.

**特記事項**

The Life Science industry has been in the grips of a reproducibility crisis for a number of years. Abcam is leading the way in addressing this with our range of recombinant monoclonal antibodies and knockout edited cell lines for gold-standard validation. Please check that this product meets your needs before purchasing.

If you have any questions, special requirements or concerns, please send us an inquiry and/or contact our Support team ahead of purchase. Recommended alternatives for this product can be found below, along with publications, customer reviews and Q&As

### 製品の特性

---

製品の状態	Liquid
保存方法	Shipped at 4°C. Store at +4°C short term (1-2 weeks). Store at +4°C.
バッファー	pH: 7.2 Preservative: 0.02% Sodium azide
精製度	Affinity purified
ポリ/モノ	ポリクローナル
アイソタイプ	IgG

### アプリケーション

---

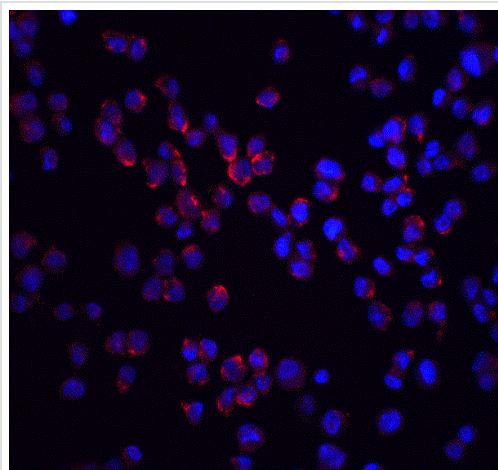
**The Abpromise guarantee**      **Abpromise保証は、次のテスト済みアプリケーションにおけるab8428の使用に適用されます**  
アプリケーションノートには、推奨の開始希釈率がありますが、適切な希釈率につきましてはご検討ください。

アプリケーション	Abreviews	特記事項
WB		1/1000. Detects a band of approximately 60 kDa.
ICC/IF		Use a concentration of 10 µg/ml.

## ターゲット情報

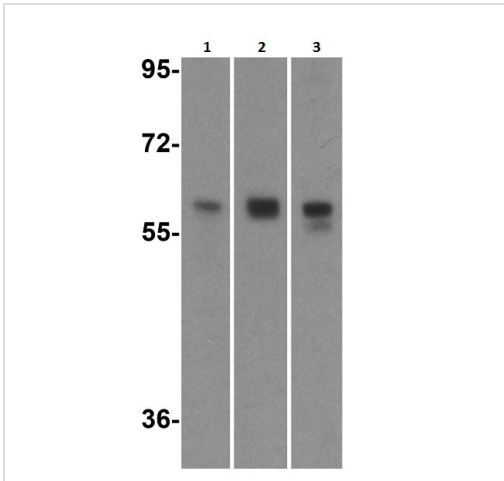
機能	Activates pro-caspase-1 and pro-caspase-8. Potentiates CASP8-mediated apoptosis. Activates NF-kappa-B.
組織特異性	Detected in heart, brain, placenta, lung, peripheral blood leukocytes, spleen, kidney, testis, prostate, pancreas and lymph node.
配列類似性	Belongs to the protein kinase superfamily. TKL Ser/Thr protein kinase family. Contains 1 CARD domain. Contains 1 protein kinase domain.
翻訳後修飾	Autophosphorylated. Phosphorylated upon DNA damage, probably by ATM or ATR. Ubiquitinated; undergoes 'Lys-63'-linked polyubiquitination catalyzed by ITCH.
細胞内局在	Cytoplasm.

## 画像



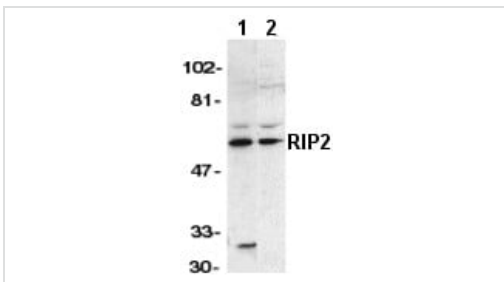
Immunocytochemistry/ Immunofluorescence of K562 cells staining  
RIP2 with ab8428 at 20µg/ml

Immunocytochemistry/ Immunofluorescence - Anti-  
RIP2 antibody (ab8428)



Western blot - Anti-RIP2 antibody (ab8428)

Western Blot of HeLa (1), Ramos (2) and EL4 (3) cell lysates labeling RIP2 with Anti-RIP2 antibody (ab8428) at 1 µg/ml.



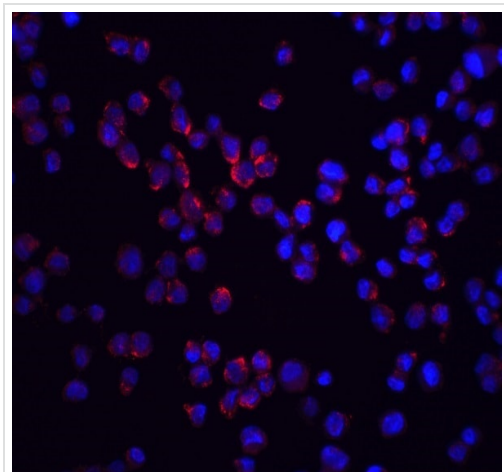
Western blot - Anti-RIP2 antibody (ab8428)

**All lanes :** Anti-RIP2 antibody (ab8428) at 1/1000 dilution

**Lane 1 :** A431 whole cell lysate

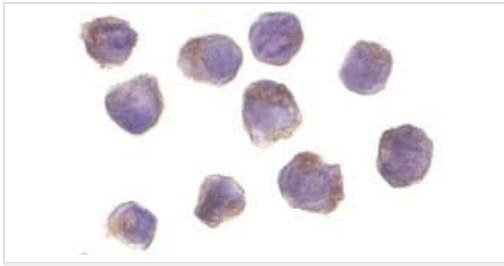
**Lane 2 :** K562 whole cell lysate

**Observed band size:** 60 kDa



Immunocytochemistry/ Immunofluorescence - Anti-RIP2 antibody (ab8428)

Ab8428 at 20 µg/ml staining RIP2 in K562 cells by ICC/IF (Immunocytochemistry/Immunofluorescence).



ab8428 at 10 $\mu$ g/ml staining RIP2 in A431 cells by ICC/IF

Immunocytochemistry/ Immunofluorescence - Anti-RIP2 antibody (ab8428)

**Please note:** All products are "FOR RESEARCH USE ONLY. NOT FOR USE IN DIAGNOSTIC PROCEDURES"

### Our Abpromise to you: Quality guaranteed and expert technical support

---

- Replacement or refund for products not performing as stated on the datasheet
- Valid for 12 months from date of delivery
- Response to your inquiry within 24 hours
- We provide support in Chinese, English, French, German, Japanese and Spanish
- Extensive multi-media technical resources to help you
- We investigate all quality concerns to ensure our products perform to the highest standards

If the product does not perform as described on this datasheet, we will offer a refund or replacement. For full details of the Abpromise, please visit <https://www.abcam.co.jp/abpromise> or contact our technical team.

### Terms and conditions

---

- Guarantee only valid for products bought direct from Abcam or one of our authorized distributors