

Anti-RIOK1/RIO1 antibody ab88496

★★★★☆ [1 Abreviews](#) [3 References](#) [画像数 2](#)

製品の概要

製品名	Anti-RIOK1/RIO1 antibody
製品の詳細	Rabbit polyclonal to RIOK1/RIO1
由来種	Rabbit
アプリケーション	適用あり: WB, IP
種交差性	交差種: Human 交差が予測される動物種: Cow, Dog, Pig, Chimpanzee, Gorilla, Orangutan, Bat, Elephant 
免疫原	Synthetic peptide corresponding to Human RIOK1/RIO1. Database link: NP_113668.2
ポジティブ・コントロール	Whole cell lysate from HeLa or 293T cells
特記事項	<p>The Life Science industry has been in the grips of a reproducibility crisis for a number of years. Abcam is leading the way in addressing this with our range of recombinant monoclonal antibodies and knockout edited cell lines for gold-standard validation. Please check that this product meets your needs before purchasing.</p> <p>If you have any questions, special requirements or concerns, please send us an inquiry and/or contact our Support team ahead of purchase. Recommended alternatives for this product can be found below, along with publications, customer reviews and Q&As</p>

製品の特性

製品の状態	Liquid
保存方法	Shipped at 4°C. Upon delivery aliquot and store at -20°C. Avoid freeze / thaw cycles.
バッファー	pH: 6.8 Preservative: 0.09% Sodium azide Constituents: 0.1% BSA, Tris buffered saline
精製度	Immunogen affinity purified
ポリ/モノ	ポリクローナル
アイソタイプ	IgG

アプリケーション

The Abpromise guarantee

Abpromise保証は、次のテスト済みアプリケーションにおけるab88496の使用に適用されます

アプリケーションノートには、推奨の開始希釈率がありますが、適切な希釈率につきましてはご検討ください。

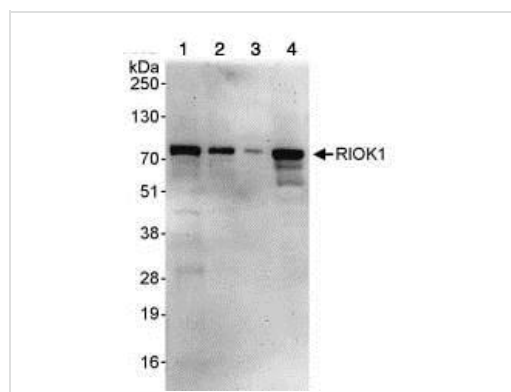
アプリケーション	Abreviews	特記事項
WB		1/2000 - 1/10000. Predicted molecular weight: 66 kDa.
IP		Use at 2-5 µg/mg of lysate.

ターゲット情報

配列類似性

Belongs to the protein kinase superfamily. RIO-type Ser/Thr kinase family.
Contains 1 protein kinase domain.

画像



Western blot - Anti-RIOK1/RIO1 antibody (ab88496)

All lanes : Anti-RIOK1/RIO1 antibody (ab88496) at 0.04 µg/ml

Lane 1 : HeLa whole cell lysate at 50 µg

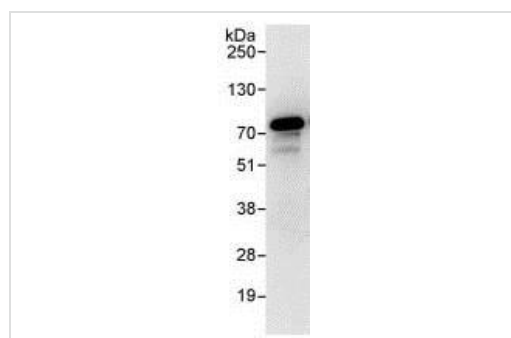
Lane 2 : HeLa whole cell lysate at 15 µg

Lane 3 : HeLa whole cell lysate at 5 µg

Lane 4 : 293T whole cell lysate at 50 µg

Predicted band size: 66 kDa

Exposure time: 3 minutes



Immunoprecipitation - Anti-RIOK1/RIO1 antibody (ab88496)

3µg ab88496 were used to immunoprecipitate 1mg HeLa whole cell lysate. 20% of immunoprecipitate was loaded on gel and probed with ab88496 at 0.4µg/ml.

Detection: chemoluminescence with exposure time of 30 seconds.

Please note: All products are "FOR RESEARCH USE ONLY. NOT FOR USE IN DIAGNOSTIC PROCEDURES"

Our Abpromise to you: Quality guaranteed and expert technical support

- Replacement or refund for products not performing as stated on the datasheet
- Valid for 12 months from date of delivery
- Response to your inquiry within 24 hours

- We provide support in Chinese, English, French, German, Japanese and Spanish
- Extensive multi-media technical resources to help you
- We investigate all quality concerns to ensure our products perform to the highest standards

If the product does not perform as described on this datasheet, we will offer a refund or replacement. For full details of the Abpromise, please visit <https://www.abcam.co.jp/abpromise> or contact our technical team.

Terms and conditions

- Guarantee only valid for products bought direct from Abcam or one of our authorized distributors