

Anti-RIM2 antibody ab69860

[1 Abreviews](#) [1 References](#) [画像数 2](#)

製品の概要

製品名	Anti-RIM2 antibody
製品の詳細	Rabbit polyclonal to RIM2
由来種	Rabbit
特異性	RIM2 is known to exist in multiple isoforms; this antibody should recognize most of them. The antibody is predicted to have no cross reactivity to other RIM proteins.
アプリケーション	適用あり: WB, IHC-P 適用なし: IHC-FoFr
種交差性	交差種: Human
免疫原	A 17 amino acid synthetic peptide near the center of human RIM2
特記事項	<p>The Life Science industry has been in the grips of a reproducibility crisis for a number of years. Abcam is leading the way in addressing this with our range of recombinant monoclonal antibodies and knockout edited cell lines for gold-standard validation. Please check that this product meets your needs before purchasing.</p> <p>If you have any questions, special requirements or concerns, please send us an inquiry and/or contact our Support team ahead of purchase. Recommended alternatives for this product can be found below, along with publications, customer reviews and Q&As</p>

製品の特性

製品の状態	Liquid
保存方法	Shipped at 4°C. Store at +4°C short term (1-2 weeks). Upon delivery aliquot. Store at -20°C. Avoid freeze / thaw cycle.
バッファー	pH: 7.2 Preservative: 0.02% Sodium azide Constituent: PBS
精製度	Immunogen affinity purified
ポリ/モノ	ポリクローナル
アイソタイプ	IgG

アプリケーション

The Abpromise guarantee

Abpromise保証は、次のテスト済みアプリケーションにおけるab69860の使用に適用されます

アプリケーションノートには、推奨の開始希釈率がありますが、適切な希釈率につきましてはご検討ください。

アプリケーション	Abreviews	特記事項
WB		Use a concentration of 1 µg/ml. Predicted molecular weight: 160 kDa.
IHC-P		Use a concentration of 5 µg/ml.

追加情報

Is unsuitable for IHC-FoFr.

ターゲット情報

機能

Rab effector involved in exocytosis. May act as scaffold protein.

配列類似性

Contains 2 C2 domains.

Contains 1 FYVE-type zinc finger.

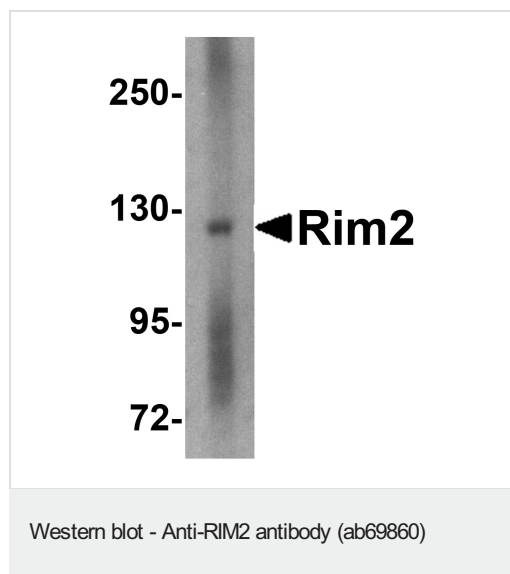
Contains 1 PDZ (DHR) domain.

Contains 1 RabBD (Rab-binding) domain.

細胞内局在

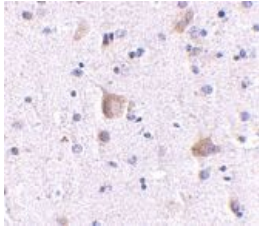
Cell membrane. Cell junction > synapse. Cell junction > synapse > presynaptic cell membrane.

画像



Anti-RIM2 antibody (ab69860) at 1 µg/ml + Human brain lysates

Predicted band size: 160 kDa



ab69860 at 5 µg/ml staining RIM2 in human prostate tissue section by Immunohistochemistry (Formalin/ PFA fixed paraffin-embedded sections).

Immunohistochemistry (Formalin/PFA-fixed paraffin-embedded sections) - Anti-RIM2 antibody (ab69860)

Please note: All products are "FOR RESEARCH USE ONLY. NOT FOR USE IN DIAGNOSTIC PROCEDURES"

Our Abpromise to you: Quality guaranteed and expert technical support

- Replacement or refund for products not performing as stated on the datasheet
- Valid for 12 months from date of delivery
- Response to your inquiry within 24 hours
- We provide support in Chinese, English, French, German, Japanese and Spanish
- Extensive multi-media technical resources to help you
- We investigate all quality concerns to ensure our products perform to the highest standards

If the product does not perform as described on this datasheet, we will offer a refund or replacement. For full details of the Abpromise, please visit <https://www.abcam.co.jp/abpromise> or contact our technical team.

Terms and conditions

- Guarantee only valid for products bought direct from Abcam or one of our authorized distributors