


Anti-Rif1 antibody ab70254

2 References [画像数 2](#)

製品の概要

製品名	Anti-Rif1 antibody
製品の詳細	Rabbit polyclonal to Rif1
由来種	Rabbit
特異性	Reactivity with mouse Rif1 is not expected owing to divergence of sequence between this ortholog and human Rif1 at the site to which the epitope maps.
アプリケーション	適用あり: IHC-P, IP
種交差性	交差種: Human 交差が予測される動物種: Chimpanzee, Rhesus monkey, Orangutan 
免疫原	Synthetic peptide corresponding to a region between residues 1 and 50 of human Rif1 (NP_060621.3)
ポジティブ・コントロール	Whole cell lysate from 293T cells.
特記事項	<p>The Life Science industry has been in the grips of a reproducibility crisis for a number of years. Abcam is leading the way in addressing this with our range of recombinant monoclonal antibodies and knockout edited cell lines for gold-standard validation. Please check that this product meets your needs before purchasing.</p> <p>If you have any questions, special requirements or concerns, please send us an inquiry and/or contact our Support team ahead of purchase. Recommended alternatives for this product can be found below, along with publications, customer reviews and Q&As</p>

製品の特性

製品の状態	Liquid
保存方法	Shipped at 4°C. Upon delivery aliquot and store at -20°C. Avoid freeze / thaw cycles.
バッファー	pH: 7 Preservative: 0.09% Sodium azide Constituents: 1.815% Tris, 1.764% Sodium citrate, 0.021% PBS
精製度	Immunogen affinity purified
ポリ/モノ	ポリクローナル
アイソタイプ	IgG

アプリケーション

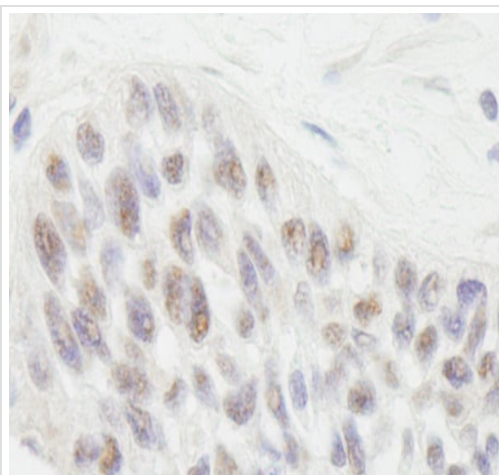
The Abpromise guarantee Abpromise保証は、 次のテスト済みアプリケーションにおけるab70254の使用に適用されます
アプリケーションノートには、推奨の開始希釈率がありますが、適切な希釈率につきましてはご検討ください。

アプリケーション	Abreviews	特記事項
IHC-P		1/500 - 1/2000. Perform heat mediated antigen retrieval with citrate buffer pH 6 before commencing with IHC staining protocol.
IP		Use at 1-5 µg/mg of lysate.

ターゲット情報

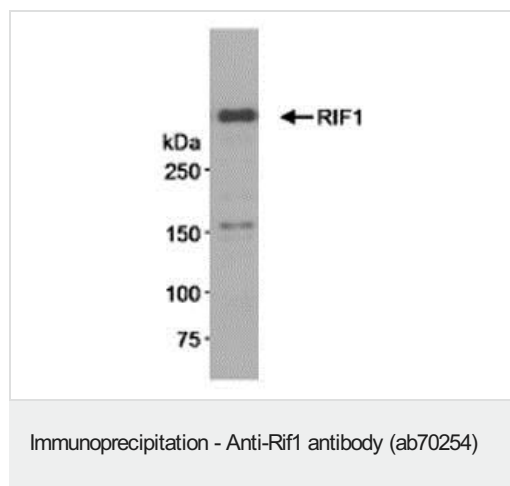
機能	Required for checkpoint mediated arrest of cell cycle progression in response to DNA damage during S-phase (the intra-S-phase checkpoint). This checkpoint requires activation of at least 2 parallel pathways by the ATM kinase: one involves the MRN (MRE11A-RAD50-NBS1) complex, while the second requires CHEK2. RIF1 seems to act independently of both these pathways. Seems to play no role in either the G1/S or G2/M DNA damage checkpoints.
組織特異性	Highly expressed in testis.
発生段階	Expression peaks in late G2/S phase of the cell cycle.
翻訳後修飾	Phosphorylated upon DNA damage, probably by ATM or ATR.
細胞内局在	Nucleus. Chromosome > telomere. Cytoplasm > cytoskeleton > spindle. Exhibits ATM- and TP53BP1-dependent localization to uncapped or aberrant telomeres and to DNA double strand breaks (DSBs). Does not associate with normal telomere structures. Localizes to microtubules of the midzone of the mitotic spindle during anaphase, and to condensed chromosomes in telophase.

画像



Immunohistochemistry (Formalin/PFA-fixed paraffin-embedded sections) - Anti-Rif1 antibody (ab70254)

Immunohistochemistry (Formalin/PFA-fixed paraffin-embedded sections) analysis of human laryngeal squamous cell carcinoma tissue labelling Rif1 with ab70254 at 1/1000 (1µg/ml). Detection: DAB.



Immunoprecipitation analysis of 293T whole cell lysate (1 mg for IP, 25% of reaction loaded), using ab70254 at 5 µg/mg lysate for IP. Immunoprecipitated Rif1 was blotted using **ab70307** at 0.4 µg/ml.

Please note: All products are "FOR RESEARCH USE ONLY. NOT FOR USE IN DIAGNOSTIC PROCEDURES"

Our Abpromise to you: Quality guaranteed and expert technical support

- Replacement or refund for products not performing as stated on the datasheet
- Valid for 12 months from date of delivery
- Response to your inquiry within 24 hours
- We provide support in Chinese, English, French, German, Japanese and Spanish
- Extensive multi-media technical resources to help you
- We investigate all quality concerns to ensure our products perform to the highest standards

If the product does not perform as described on this datasheet, we will offer a refund or replacement. For full details of the Abpromise, please visit <https://www.abcam.co.jp/abpromise> or contact our technical team.

Terms and conditions

- Guarantee only valid for products bought direct from Abcam or one of our authorized distributors