


Anti-Rif1 antibody ab13422

★★★★★ [1 Abreviews](#) [9 References](#) [画像数 1](#)

製品の概要

製品名	Anti-Rif1 antibody
製品の詳細	Rabbit polyclonal to Rif1
由来種	Rabbit
特異性	The immunogen sequence for ab13422 represents the C-terminal end of mouse Rif1, mouse telomere-associated protein RIF1 and mouse Rap1-interacting factor.
アプリケーション	適用あり: IP, ELISA, WB
種交差性	交差種: Mouse 交差が予測される動物種: Rat, Cow, Dog, Human 
免疫原	Synthetic peptide corresponding to Mouse Rif1 aa 2405-2419 (C terminal) conjugated to keyhole limpet haemocyanin. Sequence: C-RNLQSRWRSPAHEHS

Database link: [Q6PR54](#)

 [Run BLAST with](#)

 [Run BLAST with](#)

特記事項

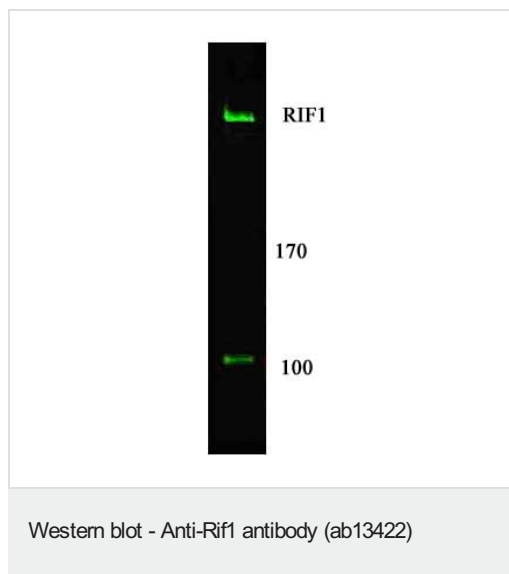
The Life Science industry has been in the grips of a reproducibility crisis for a number of years. Abcam is leading the way in addressing this with our range of recombinant monoclonal antibodies and knockout edited cell lines for gold-standard validation. Please check that this product meets your needs before purchasing.

If you have any questions, special requirements or concerns, please send us an inquiry and/or contact our Support team ahead of purchase. Recommended alternatives for this product can be found below, along with publications, customer reviews and Q&As

製品の特性

製品の状態	Liquid
保存方法	Shipped at 4°C. Upon delivery aliquot and store at -20°C. Avoid freeze / thaw cycles.
バッファー	Preservative: 0.01% Sodium azide Constituents: 0.42% Potassium phosphate, 0.87% Sodium chloride
精製度	Immunogen affinity purified
ポリ/モノ	ポリクローナル

アイソタイプ	lgG
アプリケーション	
<p>The Abpromise guarantee <u>Abpromise保証は、次のテスト済みアプリケーションにおけるab13422の使用に適用されます</u></p> <p>アプリケーションノートには、推奨の開始希釈率がありますが、適切な希釈率につきましてはご検討ください。</p>	
アプリケーション	Abreviews
IP	
ELISA	
WB	★★★★☆ (1)
<p>追加情報</p> <p>ELISA: 1/5000 - 1/40000.</p> <p>IP: Use at an assay dependent dilution (PMID 19000314).</p> <p>WB: 1/500 - 1/3000. Detects a band of approximately 265 kDa (predicted molecular weight: 265 kDa).</p> <p>Not yet tested in other applications.</p> <p>Optimal dilutions/concentrations should be determined by the end user.</p>	
ターゲット情報	
機能	Required for checkpoint mediated arrest of cell cycle progression in response to DNA damage during S-phase (the intra-S-phase checkpoint). This checkpoint requires activation of at least 2 parallel pathways by the ATM kinase: one involves the MRN (MRE11A-RAD50-NBS1) complex, while the second requires CHEK2. RIF1 seems to act independently of both these pathways. Seems to play no role in either the G1/S or G2/M DNA damage checkpoints.
組織特異性	Highly expressed in testis.
発生段階	Expression peaks in late G2/S phase of the cell cycle.
翻訳後修飾	Phosphorylated upon DNA damage, probably by ATM or ATR.
細胞内局在	Nucleus. Chromosome > telomere. Cytoplasm > cytoskeleton > spindle. Exhibits ATM- and TP53BP1-dependent localization to uncapped or aberrant telomeres and to DNA double strand breaks (DSBs). Does not associate with normal telomere structures. Localizes to microtubules of the midzone of the mitotic spindle during anaphase, and to condensed chromosomes in telophase.
画像	



Anti-Rif1 antibody (ab13422) at 1 µg/ml + 25 ug of MEF whole cell lysate

Secondary

IRDyeTM800 conjugated goat anti rabbit IgG (H&L) incubated for 45 minutes at 1/10000 dilution

Predicted band size: 265 kDa

Additional bands at: 100 kDa. We are unsure as to the identity of these extra bands.

Please note: All products are "FOR RESEARCH USE ONLY. NOT FOR USE IN DIAGNOSTIC PROCEDURES"

Our Abpromise to you: Quality guaranteed and expert technical support

- Replacement or refund for products not performing as stated on the datasheet
- Valid for 12 months from date of delivery
- Response to your inquiry within 24 hours
- We provide support in Chinese, English, French, German, Japanese and Spanish
- Extensive multi-media technical resources to help you
- We investigate all quality concerns to ensure our products perform to the highest standards

If the product does not perform as described on this datasheet, we will offer a refund or replacement. For full details of the Abpromise, please visit <https://www.abcam.co.jp/abpromise> or contact our technical team.

Terms and conditions

- Guarantee only valid for products bought direct from Abcam or one of our authorized distributors