


Anti-RICTOR antibody ab70374

16 References **画像数 4**

製品の概要

製品名	Anti-RICTOR antibody
製品の詳細	Rabbit polyclonal to RICTOR
由来種	Rabbit
特異性	Initial tests for reactivity with mouse RICTOR from NIH3T3 cells suggest that higher amounts of lysate and less dilution of ab70374 are required for brief exposure times.
アプリケーション	適用あり: WB, IP, Flow Cyt, IHC-P
種交差性	交差種: Mouse, Human 交差が予測される動物種: Dog, Chimpanzee, Rhesus monkey, Gorilla, Orangutan 
免疫原	Synthetic peptide corresponding to a region between residue 1650 and the C-terminus (residue 1708) of human RICTOR.
特記事項	<p>The Life Science industry has been in the grips of a reproducibility crisis for a number of years. Abcam is leading the way in addressing this with our range of recombinant monoclonal antibodies and knockout edited cell lines for gold-standard validation. Please check that this product meets your needs before purchasing.</p> <p>If you have any questions, special requirements or concerns, please send us an inquiry and/or contact our Support team ahead of purchase. Recommended alternatives for this product can be found below, along with publications, customer reviews and Q&As</p>

製品の特性

製品の状態	Liquid
保存方法	Shipped at 4°C. Upon delivery aliquot and store at -20°C. Avoid freeze / thaw cycles.
バッファー	pH: 7 Preservative: 0.09% Sodium azide Constituents: 0.1% BSA, Tris buffered saline
精製度	Immunogen affinity purified
ポリ/モノ	ポリクローナル
アイソタイプ	IgG

アプリケーション

The Abpromise guarantee

Abpromise保証は、次のテスト済みアプリケーションにおけるab70374の使用に適用されます

アプリケーションノートには、推奨の開始希釈率がありますが、適切な希釈率につきましてはご検討ください。

アプリケーション	Abreviews	特記事項
WB		1/2000 - 1/10000. Detects a band of approximately 192 kDa (predicted molecular weight: 192 kDa).
IP		Use at 2-10 µg/mg of lysate.
Flow Cyt		Use at an assay dependent concentration. 0.5 ug per 1 million cells in a 150 mcl reaction. ab171870 - Rabbit polyclonal IgG, is suitable for use as an isotype control with this antibody.
IHC-P		Use a concentration of 2 µg/ml. Perform heat mediated antigen retrieval with citrate buffer pH 6 before commencing with IHC staining protocol.

ターゲット情報

機能

Subunit of mTORC2, which regulates cell growth and survival in response to hormonal signals. mTORC2 is activated by growth factors, but, in contrast to mTORC1, seems to be nutrient-insensitive. mTORC2 seems to function upstream of Rho GTPases to regulate the actin cytoskeleton, probably by activating one or more Rho-type guanine nucleotide exchange factors. mTORC2 promotes the serum-induced formation of stress-fibers or F-actin. mTORC2 plays a critical role in AKT1 'Ser-473' phosphorylation, which may facilitate the phosphorylation of the activation loop of AKT1 on 'Thr-308' by PDK1 which is a prerequisite for full activation. mTORC2 regulates the phosphorylation of SGK1 at 'Ser-422'. mTORC2 also modulates the phosphorylation of PRKCA on 'Ser-657'. Plays an essential role in embryonic growth and development.

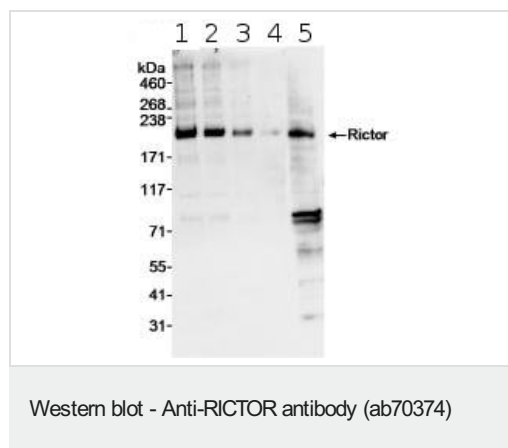
配列類似性

Belongs to the RICTOR family.

翻訳後修飾

Phosphorylated by MTOR; when part of mTORC2. Phosphorylated at Thr-1135 by RPS6KB1; phosphorylation of RICTOR inhibits mTORC2 and AKT1 signaling.

画像



All lanes : Anti-RICTOR antibody (ab70374) at 0.04 µg/ml

Lane 1 : HeLa whole cell lysate at 5 µg

Lane 2 : HeLa whole cell lysate at 2.5 µg

Lane 3 : HeLa whole cell lysate at 1 µg

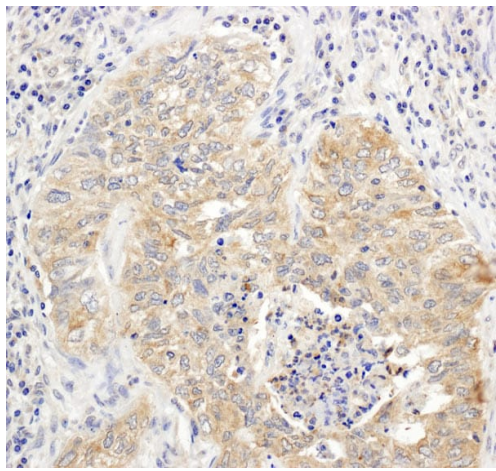
Lane 4 : HeLa whole cell lysate at 0.5 µg

Lane 5 : NIH3T3 cells at 50 µg

Predicted band size: 192 kDa

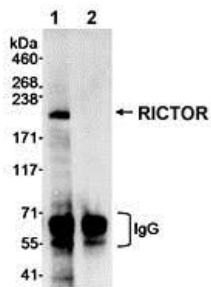
Observed band size: 192 kDa

Additional bands at: 78 kDa, 80 kDa. We are unsure as to the identity of these extra bands.



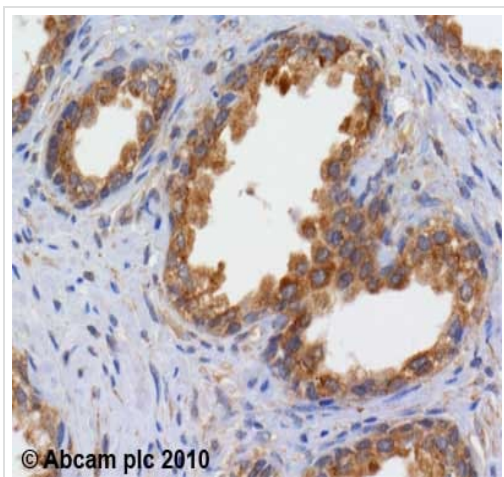
Immunohistochemistry (Formalin/PFA-fixed paraffin-embedded sections) - Anti-RICTOR antibody (ab70374)

Immunohistochemistry (Formalin/PFA-fixed paraffin-embedded sections) analysis of human lung carcinoma tissue labelling RICTOR with ab70374 at 1/1000 (1 μ g/ml). Detection: DAB.



Immunoprecipitation - Anti-RICTOR antibody (ab70374)

Detection of Human RICTOR by Immunoprecipitation in Whole cell lysate from HeLa cells (1 mg for IP, 1/4 of IP loaded) using ab70374 at 3 μ g/mg for IP (Lane 1) and at 0.04 μ g/ml for subsequent WB detection. Lane 2 represents control rabbit IgG.



Immunohistochemistry (Formalin/PFA-fixed paraffin-embedded sections) - Anti-RICTOR antibody (ab70374)

ab70374 (2µg/ml) staining RICTOR in human prostate using an automated system (DAKO Autostainer Plus). Using this protocol there is strong cytoplasmic staining of glandular epithelium. Sections were rehydrated and antigen retrieved with the Dako 3 in 1 AR buffer citrate pH 6.0 in a DAKO PT link. Slides were peroxidase blocked in 3% H₂O₂ in methanol for 10 mins. They were then blocked with Dako Protein block for 10 minutes (containing casein 0.25% in PBS) then incubated with primary antibody for 20 min and detected with Dako Envision Flex amplification kit for 30 minutes. Colorimetric detection was completed with Diaminobenzidine for 5 minutes. Slides were counterstained with Haematoxylin and coverslipped under DePeX. Please note that, for manual staining, optimization of primary antibody concentration and incubation time is recommended. Signal amplification may be required.

Please note: All products are "FOR RESEARCH USE ONLY. NOT FOR USE IN DIAGNOSTIC PROCEDURES"

Our Abpromise to you: Quality guaranteed and expert technical support

- Replacement or refund for products not performing as stated on the datasheet
- Valid for 12 months from date of delivery
- Response to your inquiry within 24 hours
- We provide support in Chinese, English, French, German, Japanese and Spanish
- Extensive multi-media technical resources to help you
- We investigate all quality concerns to ensure our products perform to the highest standards

If the product does not perform as described on this datasheet, we will offer a refund or replacement. For full details of the Abpromise, please visit <https://www.abcam.co.jp/abpromise> or contact our technical team.

Terms and conditions

- Guarantee only valid for products bought direct from Abcam or one of our authorized distributors