

Anti-Rhp51 antibody ab63799

3 References [画像数 2](#)

製品の概要

製品名	Anti-Rhp51 antibody
製品の詳細	Rabbit polyclonal to Rhp51
由来種	Rabbit
アプリケーション	適用あり: WB, IP, ICC/IF
種交差性	交差種: Schizosaccharomyces pombe
免疫原	Purified recombinant full length protein (Schizosaccharomyces pombe)
ポジティブ・コントロール	Schizosaccharomyces pombe whole cell extracts.
特記事項	<p>The Life Science industry has been in the grips of a reproducibility crisis for a number of years. Abcam is leading the way in addressing this with our range of recombinant monoclonal antibodies and knockout edited cell lines for gold-standard validation. Please check that this product meets your needs before purchasing.</p> <p>If you have any questions, special requirements or concerns, please send us an inquiry and/or contact our Support team ahead of purchase. Recommended alternatives for this product can be found below, along with publications, customer reviews and Q&As</p>

製品の特性

製品の状態	Liquid
保存方法	Shipped at 4°C. Store at +4°C short term (1-2 weeks). Upon delivery aliquot. Store at -20°C or -80°C. Avoid freeze / thaw cycle.
バッファー	<p>pH: 6</p> <p>Preservative: 0.09% Sodium azide</p> <p>Constituent: Whole serum</p>
精製度	Whole antiserum
ポリ/モノ	ポリクローナル
アイソタイプ	IgG

アプリケーション

The Abpromise guarantee

Abpromise保証は、次のテスト済みアプリケーションにおけるab63799の使用に適用されます

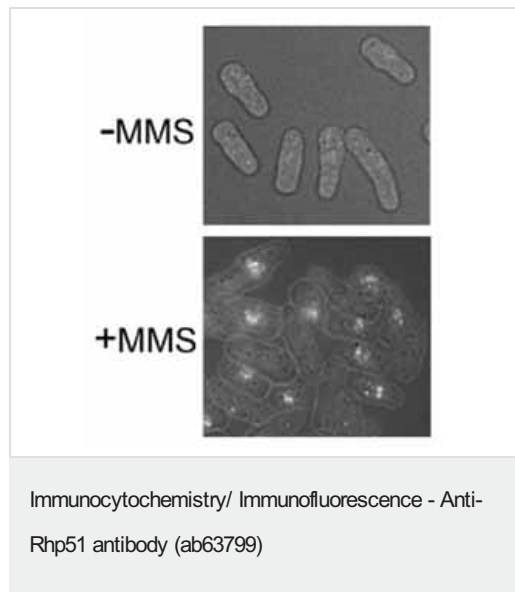
アプリケーションノートには、推奨の開始希釈率がありますが、適切な希釈率につきましてはご確認ください。

アプリケーション	Abreviews	特記事項
WB		1/2000 - 1/5000. Detects a band of approximately 44 kDa (predicted molecular weight: 40 kDa).
IP		Use at an assay dependent concentration.
ICC/IF		1/500.

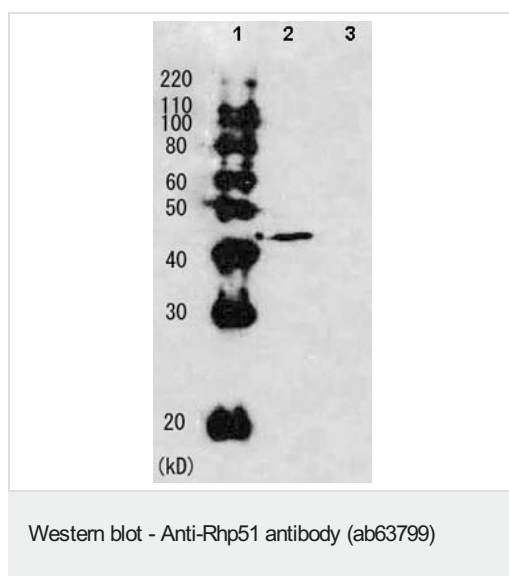
ターゲット情報

関連性	Rhp51 is required both for recombination and for the repair of DNA damage caused by X-rays. Binds to single and double stranded DNA, in the presence of magnesium, and exhibits DNA-dependent ATPase activity. Promotes DNA strand annealing and strand exchange via DNA recombinase activity and forms helical nucleoprotein filaments.
細胞内局在	Nuclear

画像



ab63799 (1/500) staining Rhp51 in *S. pombe* cells without or with MMS (0.025%) treatment for 1 hour by ICC/IF (Immunocytochemistry/immunofluorescence).



All lanes : Anti-Rhp51 antibody (ab63799) at 1/2000 dilution

Lane 1 : Molecular weight markers

Lane 2 : Whole cell extract of *Schizosaccharomyces pombe* wild-type strain

Lane 3 : Whole cell extract of *Schizosaccharomyces pombe* Rad51 deletion strain

Predicted band size: 40 kDa

Observed band size: 44 kDa

Please note: All products are "FOR RESEARCH USE ONLY. NOT FOR USE IN DIAGNOSTIC PROCEDURES"

Our Abpromise to you: Quality guaranteed and expert technical support

- Replacement or refund for products not performing as stated on the datasheet
- Valid for 12 months from date of delivery
- Response to your inquiry within 24 hours
- We provide support in Chinese, English, French, German, Japanese and Spanish
- Extensive multi-media technical resources to help you
- We investigate all quality concerns to ensure our products perform to the highest standards

If the product does not perform as described on this datasheet, we will offer a refund or replacement. For full details of the Abpromise, please visit <https://www.abcam.co.jp/abpromise> or contact our technical team.

Terms and conditions

- Guarantee only valid for products bought direct from Abcam or one of our authorized distributors