





Anti-RhoGDI (phospho S174) antibody ab74142

2 References [画像数 2](#)

製品の概要

製品名	Anti-RhoGDI (phospho S174) antibody
製品の詳細	Rabbit polyclonal to RhoGDI (phospho S174)
由来種	Rabbit
アプリケーション	適用あり: WB, IHC-P
種交差性	交差種: Human 交差が予測される動物種: Mouse, Rat 
免疫原	Synthetic peptide corresponding to Human RhoGDI (phospho S174).  Run BLAST with  Run BLAST with 
ポジティブ・コントロール	IHC-P: Human cervix carcinoma tissue. WB: HUVEC cells treated with EGF.
特記事項	<p>The Life Science industry has been in the grips of a reproducibility crisis for a number of years. Abcam is leading the way in addressing this with our range of recombinant monoclonal antibodies and knockout edited cell lines for gold-standard validation. Please check that this product meets your needs before purchasing.</p> <p>If you have any questions, special requirements or concerns, please send us an inquiry and/or contact our Support team ahead of purchase. Recommended alternatives for this product can be found below, along with publications, customer reviews and Q&As</p>

製品の特性

製品の状態	Liquid
保存方法	Shipped at 4°C. Upon delivery aliquot and store at -20°C. Avoid freeze / thaw cycles.
バッファー	pH: 7.40 Preservative: 0.02% Sodium azide Constituents: 50% Glycerol (glycerin, glycerine), 0.87% Sodium chloride, PBS
精製度	Without Mg ²⁺ and Ca ²⁺
特記事項 (精製)	Immunogen affinity purified
ポリ/モノ	The antibody was purified by affinity chromatography using epitope specific phosphopeptide. The antibody against non phosphopeptide was removed by chromatography using non phosphopeptide corresponding to the phosphorylation site. ポリクローナル

アイソタイプ

lgG

アプリケーション

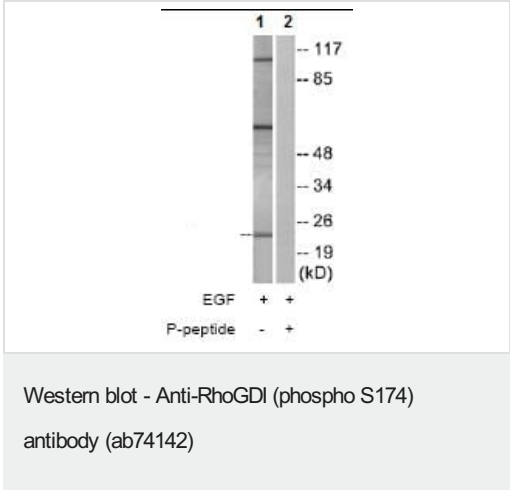
The Abpromise guarantee Abpromise保証は、次のテスト済みアプリケーションにおけるab74142の使用に適用されます
アプリケーションノートには、推奨の開始希釈率がありますが、適切な希釈率につきましてはご確認ください。

アプリケーション	Abreviews	特記事項
WB		1/500 - 1/1000. Predicted molecular weight: 23 kDa.
IHC-P		1/50 - 1/100.

ターゲット情報

機能	Regulates the GDP/GTP exchange reaction of the Rho proteins by inhibiting the dissociation of GDP from them, and the subsequent binding of GTP to them.
配列類似性	Belongs to the Rho GDI family.
細胞内局在	Cytoplasm.

画像

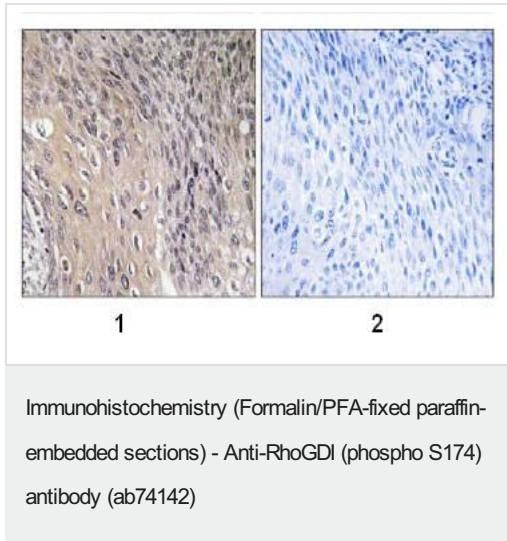


All lanes : Anti-RhoGDI (phospho S174) antibody (ab74142) at 1/500 dilution

Lane 1 : HUVEC cells treated with EGF (200ng/ml, 30mins)
Lane 2 : HUVEC cells treated with EGF (200ng/ml, 30mins) with phosphopeptide at 10 µg

Lysates/proteins at 30 µg per lane.

Predicted band size: 23 kDa
Observed band size: 23 kDa
Additional bands at: 105 kDa, 60 kDa. We are unsure as to the identity of these extra bands.



Human cervix carcinoma tissue stained with ab74142 (1/50 dilution).

1: No phosphopeptide

2: Phosphopeptide

Please note: All products are "FOR RESEARCH USE ONLY. NOT FOR USE IN DIAGNOSTIC PROCEDURES"

Our Abpromise to you: Quality guaranteed and expert technical support

- Replacement or refund for products not performing as stated on the datasheet
- Valid for 12 months from date of delivery
- Response to your inquiry within 24 hours
- We provide support in Chinese, English, French, German, Japanese and Spanish
- Extensive multi-media technical resources to help you
- We investigate all quality concerns to ensure our products perform to the highest standards

If the product does not perform as described on this datasheet, we will offer a refund or replacement. For full details of the Abpromise, please visit <https://www.abcam.co.jp/abpromise> or contact our technical team.

Terms and conditions

- Guarantee only valid for products bought direct from Abcam or one of our authorized distributors