

Anti-RHEB antibody ab25873

★★★★☆ [1 Abreviews](#) [17 References](#) [画像数 2](#)

製品の概要

製品名	Anti-RHEB antibody
製品の詳細	Rabbit polyclonal to RHEB
由来種	Rabbit
特異性	ab25873 recognises Rheb (Ras homolog enriched in brain).
アプリケーション	適用あり: IHC-P, ICC/IF, WB
種交差性	交差種: Mouse, Rat, Human, Drosophila melanogaster
免疫原	A 15 amino acid peptide from the middle region of Human Rheb.
特記事項	<p>The Life Science industry has been in the grips of a reproducibility crisis for a number of years. Abcam is leading the way in addressing this with our range of recombinant monoclonal antibodies and knockout edited cell lines for gold-standard validation. Please check that this product meets your needs before purchasing.</p> <p>If you have any questions, special requirements or concerns, please send us an inquiry and/or contact our Support team ahead of purchase. Recommended alternatives for this product can be found below, along with publications, customer reviews and Q&As</p>

製品の特性

製品の状態	Liquid
保存方法	Shipped at 4°C. Store at +4°C short term (1-2 weeks). Upon delivery aliquot. Store at -20°C long term.
バッファー	pH: 7.2 Preservative: 0.02% Sodium azide Constituent: PBS
精製度	Immunogen affinity purified
ポリ/モノ	ポリクローナル
アイソタイプ	IgG

アプリケーション

The Abpromise guarantee

Abpromise保証は、次のテスト済みアプリケーションにおけるab25873の使用に適用されます

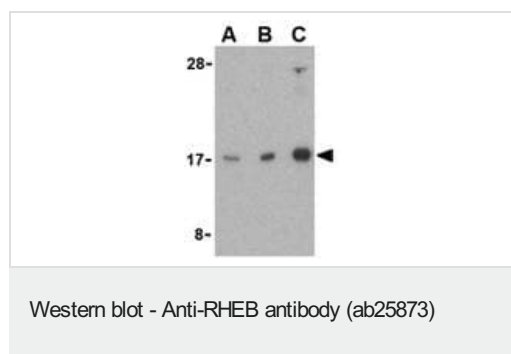
アプリケーションノートには、推奨の開始希釈率がありますが、適切な希釈率につきましてはご確認ください。

アプリケーション	Abreviews	特記事項
IHC-P		Use a concentration of 2 µg/ml.
ICC/IF		Use at an assay dependent concentration.
WB	★★★★★ (1)	Use a concentration of 1 µg/ml. Predicted molecular weight: 20 kDa.

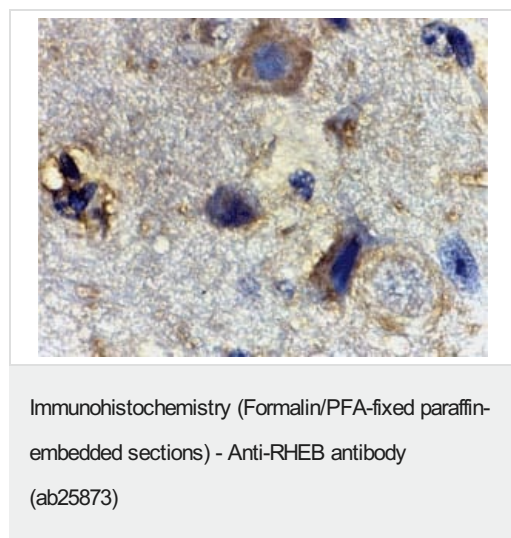
ターゲット情報

機能	Stimulates the phosphorylation of S6K1 and EIF4EBP1 through activation of mTORC1 signaling. Activates the protein kinase activity of mTORC1. Has low intrinsic GTPase activity.
組織特異性	Ubiquitous. Highest levels observed in skeletal and cardiac muscle.
配列類似性	Belongs to the small GTPase superfamily. Rheb family.
翻訳後修飾	Farnesylation is important for efficiently activating mTORC1-mediated signaling.
細胞内局在	Cell membrane.

画像



Western blot analysis of Rheb in mouse brain cell lysate with ab25873 at (A) 1, (B) 2, and (C) 4 µg/ml.



ab25873 at 2µg/ml staining RHEB in mouse brain tissue by IHC

Please note: All products are "FOR RESEARCH USE ONLY. NOT FOR USE IN DIAGNOSTIC PROCEDURES"

Our Abpromise to you: Quality guaranteed and expert technical support

- Replacement or refund for products not performing as stated on the datasheet
- Valid for 12 months from date of delivery
- Response to your inquiry within 24 hours

- We provide support in Chinese, English, French, German, Japanese and Spanish
- Extensive multi-media technical resources to help you
- We investigate all quality concerns to ensure our products perform to the highest standards

If the product does not perform as described on this datasheet, we will offer a refund or replacement. For full details of the Abpromise, please visit <https://www.abcam.co.jp/abpromise> or contact our technical team.

Terms and conditions

- Guarantee only valid for products bought direct from Abcam or one of our authorized distributors