

Anti-RFWD3 antibody ab99306

1 References [画像数 1](#)

製品の概要

製品名	Anti-RFWD3 antibody
製品の詳細	Rabbit polyclonal to RFWD3
由来種	Rabbit
アプリケーション	適用あり: IP
種交差性	交差種: Human
免疫原	Immunogen corresponds to a region within amino acids 75-125 of Human RFWD3 (NP_060594.3).
ポジティブ・コントロール	Hela whole cell lysate
特記事項	<p>The Life Science industry has been in the grips of a reproducibility crisis for a number of years. Abcam is leading the way in addressing this with our range of recombinant monoclonal antibodies and knockout edited cell lines for gold-standard validation. Please check that this product meets your needs before purchasing.</p> <p>If you have any questions, special requirements or concerns, please send us an inquiry and/or contact our Support team ahead of purchase. Recommended alternatives for this product can be found below, along with publications, customer reviews and Q&As</p>

製品の特性

製品の状態	Liquid
保存方法	Shipped at 4°C. Upon delivery aliquot and store at -20°C. Avoid freeze / thaw cycles.
バッファー	<p>pH: 7</p> <p>Preservative: 0.09% Sodium azide</p> <p>Constituent: Tris citrate/phosphate</p>
精製度	Immunogen affinity purified
ポリ/モノ	ポリクローナル
アイソタイプ	IgG

アプリケーション

The Abpromise guarantee

Abpromise保証は、 次のテスト済みアプリケーションにおけるab99306の使用に適用されます

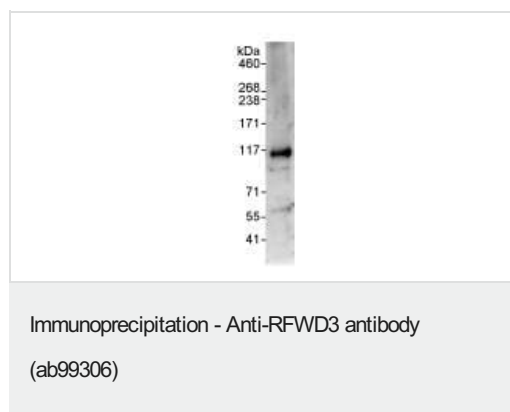
アプリケーションノートには、推奨の開始希釈率がありますが、適切な希釈率につきましてはご確認ください。

アプリケーション	Abreviews	特記事項
IP		Use at 2-5 µg/mg of lysate.

ターゲット情報

機能	E3 ubiquitin-protein ligase that mediates the ubiquitination of p53/TP53 in the late response to DNA damage, and acts as a positive regulator of p53/TP53 stability, thereby regulating the G1/S DNA damage checkpoint. May act by catalyzing the formation of short polyubiquitin chains on p53/TP53 that are not targeted to the proteasome. In response to ionizing radiation, interacts with MDM2 and enhances p53/TP53 ubiquitination, possibly by restricting MDM2 from extending polyubiquitin chains on ubiquitinated p53/TP53.
パスウェイ	Protein modification; protein ubiquitination.
配列類似性	Contains 1 RING-type zinc finger. Contains 3 WD repeats.
翻訳後修飾	Phosphorylated at Ser-46 and Ser-63 upon DNA damage by ATM or ATR. ATM phosphorylation occurs at early times upon DNA damage, while ATR is the major kinase at later times. Phosphorylation by ATM and ATR is required to stabilize p53/TP53.
細胞内局在	Nucleus.

画像



An anti RFWD3 antibody, at 1 µg/ml, staining RFWD3 in HeLa whole cell lysate immunoprecipitated using ab99306 at 3 µg/mg lysate (1 mg/IP; 20% of IP loaded/lane). Detection: Chemiluminescence with an exposure time of 30 seconds.

Please note: All products are "FOR RESEARCH USE ONLY. NOT FOR USE IN DIAGNOSTIC PROCEDURES"

Our Abpromise to you: Quality guaranteed and expert technical support

- Replacement or refund for products not performing as stated on the datasheet
- Valid for 12 months from date of delivery
- Response to your inquiry within 24 hours
- We provide support in Chinese, English, French, German, Japanese and Spanish
- Extensive multi-media technical resources to help you

- We investigate all quality concerns to ensure our products perform to the highest standards

If the product does not perform as described on this datasheet, we will offer a refund or replacement. For full details of the Abpromise, please visit <https://www.abcam.co.jp/abpromise> or contact our technical team.

Terms and conditions

- Guarantee only valid for products bought direct from Abcam or one of our authorized distributors