

# Anti-RFRP antibody ab122738

[2 References](#) [画像数 2](#)

### 製品の概要

製品名	Anti-RFRP antibody
製品の詳細	Rabbit polyclonal to RFRP
由来種	Rabbit
アプリケーション	<b>適用あり:</b> WB, IHC-P
種交差性	<b>交差種:</b> Human
免疫原	Recombinant fragment corresponding to Human RFRP aa 105-176. Sequence: TANLPLRSGRNMEVSLVRRVPNLQRFGRRTTTAKSVCRMLSD LCQGSMSH PCANDLFYSMTCQHQEIQNPDQ <a href="#">Run BLAST with</a> <a href="#">Run BLAST with</a>
ポジティブ・コントロール	IHC-P:Human retina tissue; WB: RT4 and U-251 MG whole cells, human liver and tonsil tissue lysates.
特記事項	<p>The Life Science industry has been in the grips of a reproducibility crisis for a number of years. Abcam is leading the way in addressing this with our range of recombinant monoclonal antibodies and knockout edited cell lines for gold-standard validation. Please check that this product meets your needs before purchasing.</p> <p>If you have any questions, special requirements or concerns, please send us an inquiry and/or contact our Support team ahead of purchase. Recommended alternatives for this product can be found below, along with publications, customer reviews and Q&amp;As</p>

### 製品の特性

製品の状態	Liquid
保存方法	Shipped at 4°C. Upon delivery aliquot and store at -20°C. Avoid freeze / thaw cycles.
バッファー	pH: 7.20 Preservative: 0.02% Sodium azide Constituents: 59% PBS, 40% Glycerol (glycerin, glycerine)
精製度	Immunogen affinity purified
ポリ/モノ	ポリクローナル
アイソタイプ	IgG

## アプリケーション

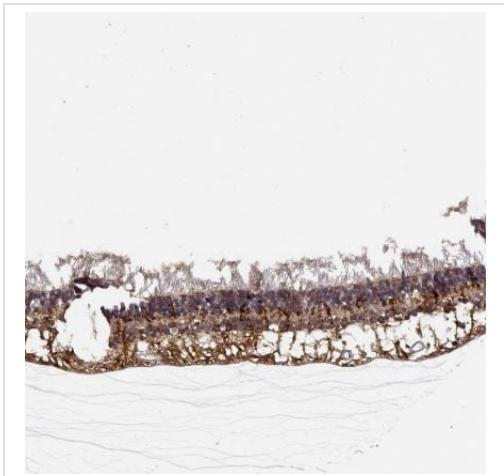
**The Abpromise guarantee** Abpromise保証は、次のテスト済みアプリケーションにおけるab122738の使用に適用されます  
アプリケーションノートには、推奨の開始希釈率がありますが、適切な希釈率につきましてはご検討ください。

アプリケーション	Abreviews	特記事項
WB		Use a concentration of 0.04 - 0.4 µg/ml.
IHC-P		1/1000 - 1/2500. Perform heat mediated antigen retrieval with citrate buffer pH 6 before commencing with IHC staining protocol.

## ターゲット情報

機能	Neuropeptide RFRP-1 acts as a potent negative regulator of gonadotropin synthesis and secretion. Neuropeptides NPSF and NPVF efficiently inhibit forskolin-induced production of cAMP, but RFRP-2 shows no inhibitory activity. Neuropeptide RFRP-1 induces secretion of prolactin in rats. Neuropeptide NPVF blocks morphine-induced analgesia.
組織特異性	Isoform 1 is specifically expressed in the retina. Neuropeptides RFRP-1 and NPVF are detected in the hypothalamus.
配列類似性	Belongs to the FARP (FMRFamide related peptide) family.
細胞内局在	Secreted.

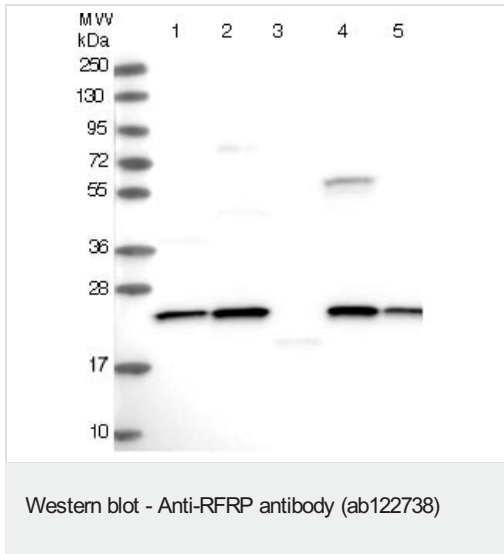
## 画像



Immunohistochemical analysis of human retina tissue labeling RFRP with ab122738 at a 1/1000 dilution.

Performed heat mediated antigen retrieval with citrate buffer pH 6 before commencing with IHC staining protocol.

Immunohistochemistry (Formalin/PFA-fixed paraffin-embedded sections) - Anti-RFRP antibody (ab122738)



**All lanes :** Anti-RFRP antibody (ab122738) at 0.4 µg/ml

**Lane 1 :** RT4 (Human urinary bladder cancer cell line) whole cell lysate

**Lane 2 :** U-251 MG (formally U-373 MG) (Human brain glioma cell line) whole cell lysate

**Lane 3 :** Human plasma tissue lysate

**Lane 4 :** Human liver tissue lysate

**Lane 5 :** Human tonsil tissue lysate

**Please note:** All products are "FOR RESEARCH USE ONLY. NOT FOR USE IN DIAGNOSTIC PROCEDURES"

### Our Abpromise to you: Quality guaranteed and expert technical support

- Replacement or refund for products not performing as stated on the datasheet
- Valid for 12 months from date of delivery
- Response to your inquiry within 24 hours
- We provide support in Chinese, English, French, German, Japanese and Spanish
- Extensive multi-media technical resources to help you
- We investigate all quality concerns to ensure our products perform to the highest standards

If the product does not perform as described on this datasheet, we will offer a refund or replacement. For full details of the Abpromise, please visit <https://www.abcam.co.jp/abpromise> or contact our technical team.

### Terms and conditions

- Guarantee only valid for products bought direct from Abcam or one of our authorized distributors