

Anti-RFP antibody [EPR18992] ab185921

リコンビナント **RabMAb**

4 References [画像数 3](#)

製品の概要

製品名	Anti-RFP antibody [EPR18992]
製品の詳細	Rabbit monoclonal [EPR18992] to RFP
由来種	Rabbit
アプリケーション	適用あり: ICC/IF, WB
種交差性	交差種: Species independent
免疫原	Recombinant full length protein within RFP aa 1 to the C-terminus. The exact immunogen sequence used to generate this antibody is proprietary information. If additional detail on the immunogen is needed to determine the suitability of the antibody for your needs, please contact our Scientific Support team to discuss your requirements. (Entacmaea quadricolor) Database link: Q8ISF8 Run BLAST with Run BLAST with
ポジティブ・コントロール	WB: RFP transfected HEK-293 whole cell lysate. ICC/IF: RFP transfected HEK-293 cells.
特記事項	This product is a recombinant monoclonal antibody, which offers several advantages including: <ul style="list-style-type: none">- High batch-to-batch consistency and reproducibility- Improved sensitivity and specificity- Long-term security of supply- Animal-free production For more information see here . Our RabMAb [®] technology is a patented hybridoma-based technology for making rabbit monoclonal antibodies. For details on our patents, please refer to RabMAb[®] patents .

製品の特性

製品の状態	Liquid
保存方法	Shipped at 4°C. Store at +4°C short term (1-2 weeks). Upon delivery aliquot. Store at -20°C long term. Avoid freeze / thaw cycle.
バッファー	pH: 7.2 Preservative: 0.01% Sodium azide Constituents: 59% PBS, 40% Glycerol (glycerin, glycerine), 0.05% BSA
精製度	Protein A purified

ポリ/モノ	モノクローナル
クローン名	EPR18992
アイソタイプ	IgG

アプリケーション

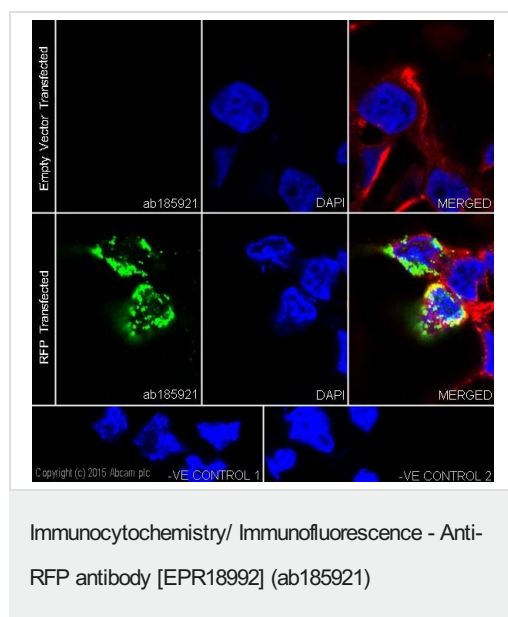
The Abpromise guarantee **Abpromise保証は、次のテスト済みアプリケーションにおけるab185921の使用に適用されます**
 アプリケーションノートには、推奨の開始希釈率がありますが、適切な希釈率につきましてはご検討ください。

アプリケーション	Abreviews	特記事項
ICC/IF		1/100.
WB		1/10000. Detects a band of approximately 26 kDa (predicted molecular weight: 26 kDa).

ターゲット情報

関連性 Fluorescent proteins have become a useful and ubiquitous tool for making chimeric proteins, where they function as a fluorescent protein tag. Typically they tolerate N- and C-terminal fusion to a broad variety of proteins. They have been expressed in most known cell types and are used as a noninvasive fluorescent marker in living cells and organisms. They enable a wide range of applications where they have functioned as a cell lineage tracer, reporter of gene expression, or as a measure of protein-protein interactions.

画像



Immunofluorescent analysis of 4% paraformaldehyde-fixed, 0.1% Triton X-100 permeabilized Empty vector transfected or RFP transfected HEK-293 (Human epithelial cell line from embryonic kidney) cells labeling RFP with ab185921 at 1/100 dilution, followed by Goat anti-rabbit IgG (Alexa Fluor® 488) (**ab150077**) secondary antibody at 1/1000 dilution (green).

Confocal image showing positive staining after transfection of RFP on HEK-293 cells.

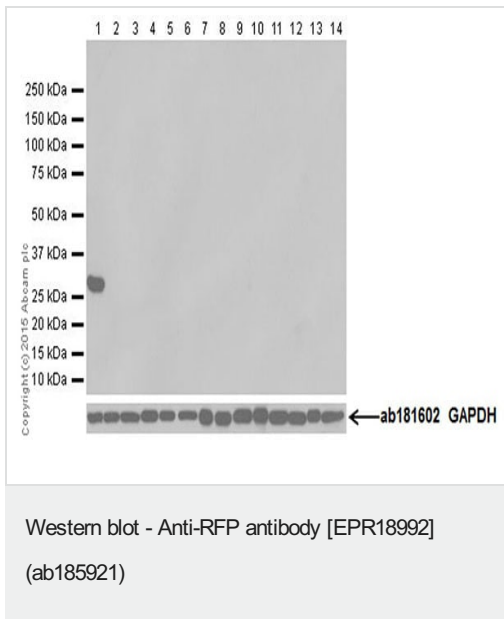
The nuclear counterstain is DAPI (blue).

Tubulin is detected with Anti-alpha Tubulin antibody [EPR18992] - Loading Control (**ab7291**) at 1/1000 dilution and Goat Anti-Mouse IgG H&L (Alexa Fluor® 594) preadsorbed (**ab150120**) at 1/1000 dilution (red).

The negative controls are as follows:-

-ve control 1: ab185921 at 1/100 dilution followed by **ab150120** at 1/1000 dilution.

-ve control 2: **ab7291** at 1/1000 dilution followed by **ab150077** at 1/1000 dilution.



All lanes : Anti-RFP antibody [EPR18992] (ab185921) at 1/10000 dilution

Lane 1 : RFP transfected HEK-293 (Human epithelial cell line from embryonic kidney) whole cell lysate

Lane 2 : Empty vector (vector control) transfected HEK-293 (Human epithelial cell line from embryonic kidney) whole cell lysate

Lane 3 : HeLa (Human epithelial cell line from cervix adenocarcinoma) whole cell lysate

Lane 4 : Jurkat (Human T cell leukemia cell line from peripheral blood) whole cell lysate

Lane 5 : Human kidney lysate

Lane 6 : Human liver lysate

Lane 7 : Mouse brain lysate

Lane 8 : Mouse heart lysate

Lane 9 : Rat brain lysate

Lane 10 : Rat heart lysate

Lane 11 : C6 (Rat glial tumor cell line) whole cell lysate

Lane 12 : RAW 264.7 (Mouse macrophage cell line transformed with Abelson murine leukemia virus) whole cell lysate

Lane 13 : PC-12 (Rat adrenal gland pheochromocytoma cell line) whole cell lysate

Lane 14 : NIH/3T3 (Mouse embryonic fibroblast cell line) whole cell lysate

Lysates/proteins at 10 µg per lane.

Secondary

All lanes : Goat Anti-Rabbit IgG H&L (HRP) (**ab97051**) at 1/100000 dilution

Predicted band size: 26 kDa

Observed band size: 26 kDa

Exposure time: 3 seconds

Blocking/Dilution buffer: 5% NFDm/TBST.

Why choose a recombinant antibody?



Research with confidence
Consistent and reproducible results



Long-term and scalable supply
Recombinant technology



Success from the first experiment
Confirmed specificity



Ethical standards compliant
Animal-free production

Anti-RFP antibody [EPR18992] (ab185921)

Please note: All products are "FOR RESEARCH USE ONLY. NOT FOR USE IN DIAGNOSTIC PROCEDURES"

Our Abpromise to you: Quality guaranteed and expert technical support

- Replacement or refund for products not performing as stated on the datasheet
- Valid for 12 months from date of delivery
- Response to your inquiry within 24 hours
- We provide support in Chinese, English, French, German, Japanese and Spanish
- Extensive multi-media technical resources to help you
- We investigate all quality concerns to ensure our products perform to the highest standards

If the product does not perform as described on this datasheet, we will offer a refund or replacement. For full details of the Abpromise, please visit <https://www.abcam.co.jp/abpromise> or contact our technical team.

Terms and conditions

- Guarantee only valid for products bought direct from Abcam or one of our authorized distributors