

Anti-RFP antibody ab62341

★★★★★ [23 Abreviews](#) [290 References](#) [画像数 1](#)

製品の概要

製品名	Anti-RFP antibody
製品の詳細	Rabbit polyclonal to RFP
由来種	Rabbit
特異性	ab62341 recognizes RFP and has been shown to react with tdTomato.
アプリケーション	適用あり: WB
種交差性	交差種: Species independent
免疫原	Recombinant full length protein corresponding to RFP. Database link: Q9U6Y8
特記事項	<p>This product is manufactured by BioVision, an Abcam company and was previously called 3993 RFP (dsRed) Antibody. 3993-100 is the same size as the 100 µg size of ab62341.</p> <p>The Life Science industry has been in the grips of a reproducibility crisis for a number of years. Abcam is leading the way in addressing this with our range of recombinant monoclonal antibodies and knockout edited cell lines for gold-standard validation. Please check that this product meets your needs before purchasing.</p> <p>If you have any questions, special requirements or concerns, please send us an inquiry and/or contact our Support team ahead of purchase. Recommended alternatives for this product can be found below, along with publications, customer reviews and Q&As</p>

製品の特性

製品の状態	Liquid
保存方法	Shipped at 4°C. Upon delivery aliquot and store at -20°C. Avoid freeze / thaw cycles.
バッファー	Preservative: 0.03% Proclin 300 Constituents: PBS, 30% Glycerol (glycerin, glycerine), 0.5% BSA, 0.146% EDTA
精製度	Immunogen affinity purified
ポリ/モノ	ポリクローナル
アイソタイプ	IgG

アプリケーション

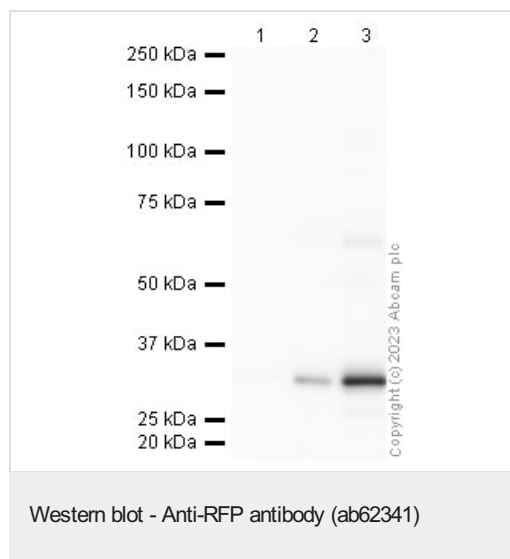
The Abpromise guarantee Abpromise保証は、次のテスト済みアプリケーションにおけるab62341の使用に適用されます
 アプリケーションノートには、推奨の開始希釈率がありますが、適切な希釈率につきましてはご検討ください。

アプリケーション	Abreviews	特記事項
WB	★★★★★ (8)	Use a concentration of 0.5 - 4 µg/ml. Predicted molecular weight: 27.6 kDa.

ターゲット情報

関連性 Fluorescent proteins have become a useful and ubiquitous tool for making chimeric proteins, where they function as a fluorescent protein tag. Typically they tolerate N- and C-terminal fusion to a broad variety of proteins. They have been expressed in most known cell types and are used as a noninvasive fluorescent marker in living cells and organisms. They enable a wide range of applications where they have functioned as a cell lineage tracer, reporter of gene expression, or as a measure of protein-protein interactions.

画像



All lanes : Anti-RFP antibody (ab62341) at 1 µg/ml

Lane 1 : Recombinant RFP 2ng

Lane 2 : Recombinant RFP 10ng

Lane 3 : Recombinant RFP 50ng

Secondary

All lanes : Goat polyclonal to Rabbit IgG - H&L - Pre-Adsorbed (HRP) at 1/50000 dilution

Predicted band size: 27.6 kDa

Observed band size: 32 kDa

Blocking Buffer - 3% Milk

Please note: All products are "FOR RESEARCH USE ONLY. NOT FOR USE IN DIAGNOSTIC PROCEDURES"

Our Abpromise to you: Quality guaranteed and expert technical support

- Replacement or refund for products not performing as stated on the datasheet
- Valid for 12 months from date of delivery
- Response to your inquiry within 24 hours

- We provide support in Chinese, English, French, German, Japanese and Spanish
- Extensive multi-media technical resources to help you
- We investigate all quality concerns to ensure our products perform to the highest standards

If the product does not perform as described on this datasheet, we will offer a refund or replacement. For full details of the Abpromise, please visit <https://www.abcam.co.jp/abpromise> or contact our technical team.

Terms and conditions

- Guarantee only valid for products bought direct from Abcam or one of our authorized distributors