



Anti-RFP antibody ab28664

★★★★☆ **4 Abreviews** **12 References** 画像数 2

製品の概要

製品名	Anti-RFP antibody
製品の詳細	Rabbit polyclonal to RFP
由来種	Rabbit
特異性	ab28664 detects RFP tagged proteins. This antibody is specific for the RFP tag. It shows very low reactivity to GFP or GFP tagged proteins. ab28664 non-specifically detects a 45 kDa protein from E. coli extracts. This non-specific cross-reactivity is not present in mammalian samples.
アプリケーション	適用あり: WB, ICC/IF
種交差性	交差種: Species independent
免疫原	Synthetic peptide: VNGHEFEIEGEGEGR , corresponding to amino acids 22-36 of RFP from Discosoma sea anemone.  Run BLAST with  Run BLAST with
特記事項	<p>The Life Science industry has been in the grips of a reproducibility crisis for a number of years. Abcam is leading the way in addressing this with our range of recombinant monoclonal antibodies and knockout edited cell lines for gold-standard validation. Please check that this product meets your needs before purchasing.</p> <p>If you have any questions, special requirements or concerns, please send us an inquiry and/or contact our Support team ahead of purchase. Recommended alternatives for this product can be found below, along with publications, customer reviews and Q&As</p>

製品の特性

製品の状態	Liquid
保存方法	Shipped at 4°C. Upon delivery aliquot and store at -20°C. Avoid freeze / thaw cycles.
バッファー	Preservative: 0.05% Sodium azide Constituents: PBS, 0.1% BSA
精製度	Immunogen affinity purified
ポリ/モノ	ポリクローナル
アイソタイプ	IgG

アプリケーション

The Abpromise guarantee

Abpromise保証は、次のテスト済みアプリケーションにおけるab28664の使用に適用されます

アプリケーションノートには、推奨の開始希釈率がありますが、適切な希釈率につきましてはご確認ください。

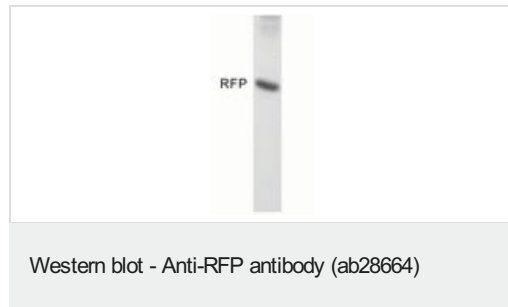
アプリケーション	Abreviews	特記事項
WB	★★★★☆ (3)	1/1000. Predicted molecular weight: 26 kDa. Use at a concentration of 2 µg/ml. Block membrane in 5% milk and incubate primary and secondary antibodies in milk.
ICC/IF	★★★★☆ (1)	1/50 - 1/200.

ターゲット情報

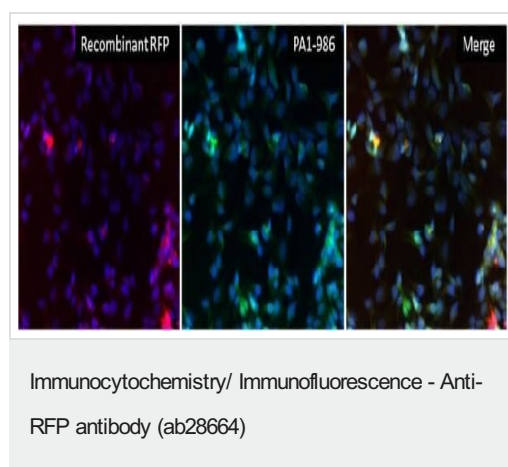
関連性

Fluorescent proteins have become a useful and ubiquitous tool for making chimeric proteins, where they function as a fluorescent protein tag. Typically they tolerate N- and C-terminal fusion to a broad variety of proteins. They have been expressed in most known cell types and are used as a noninvasive fluorescent marker in living cells and organisms. They enable a wide range of applications where they have functioned as a cell lineage tracer, reporter of gene expression, or as a measure of protein-protein interactions.

画像



Western blot of recombinant RFP using ab28664.



Immunocytochemistry/ Immunofluorescence - Anti-RFP antibody (ab28664)

Immunofluorescent analysis of recombinant Red Fluorescent Protein (RFP)-transfected HeLa cells. Cells were transfected with a pCMV RFP C-Myc plasmid and 48 hours post-transfection cells were fixed with formalin and permeabilized with 0.1% Triton X-100 for 15 minutes at room temperature. Cells were blocked with 3% BSA for 15 minutes at room temperature, and then probed with ab28664 at a dilution of 1/50 for at least 1 hour at room temperature, washed with PBS, and incubated with DyLight® 488-conjugated goat anti-rabbit IgG secondary antibody at a dilution of 1/400 for 30 minutes at room temperature. Nuclei (blue) were stained with Hoechst 33342 dye. Images were taken at 20X magnification.

Please note: All products are "FOR RESEARCH USE ONLY. NOT FOR USE IN DIAGNOSTIC PROCEDURES"

Our Abpromise to you: Quality guaranteed and expert technical support

- Replacement or refund for products not performing as stated on the datasheet
- Valid for 12 months from date of delivery
- Response to your inquiry within 24 hours

- We provide support in Chinese, English, French, German, Japanese and Spanish
- Extensive multi-media technical resources to help you
- We investigate all quality concerns to ensure our products perform to the highest standards

If the product does not perform as described on this datasheet, we will offer a refund or replacement. For full details of the Abpromise, please visit <https://www.abcam.co.jp/abpromise> or contact our technical team.

Terms and conditions

- Guarantee only valid for products bought direct from Abcam or one of our authorized distributors